

**Chunghwa Telecom Co., Ltd. and  
Subsidiaries**

**Consolidated Financial Statements for the  
Three Months Ended March 31, 2019 and 2018 and  
Independent Auditors' Review Report**

## INDEPENDENT AUDITORS' REVIEW REPORT

The Board of Directors and Stockholders  
Chunghwa Telecom Co., Ltd.

### Introduction

We have reviewed the accompanying consolidated balance sheets of Chunghwa Telecom Co., Ltd. and its subsidiaries (the "Company") as of March 31, 2019 and 2018, the related consolidated statements of comprehensive income, the consolidated statements of changes in equity and cash flows for the three months then ended, and the related notes to the consolidated financial statements, including a summary of significant accounting policies (collectively referred to as the "consolidated financial statements"). Management is responsible for the preparation and fair presentation of the consolidated financial statements in accordance with the Regulations Governing the Preparation of Financial Reports by Securities Issuers and International Accounting Standard 34 "Interim Financial Reporting" endorsed and issued into effect by the Financial Supervisory Commission of the Republic of China. Our responsibility is to express a conclusion on the consolidated financial statements based on our reviews.

### Scope of Review

We conducted our reviews in accordance with Statement of Auditing Standards No. 65 "Review of Financial Information Performed by the Independent Auditor of the Entity". A review of consolidated financial statements consists of making inquiries, primarily of persons responsible for financial and accounting matters, and applying analytical and other review procedures. A review is substantially less in scope than an audit and consequently does not enable us to obtain assurance that we would become aware of all significant matters that might be identified in an audit. Accordingly, we do not express an audit opinion.

### Conclusion

Based on our reviews, nothing has come to our attention that caused us to believe that the accompanying consolidated financial statements do not present fairly, in all material respects, the consolidated financial position of the Company as of March 31, 2019 and 2018, and its consolidated financial performance and its consolidated cash flows for the three months then ended March 31, 2019 and 2018 in accordance with the Regulations Governing the Preparation of Financial Reports by Securities Issuers, and International Accounting Standard 34 "Interim Financial Reporting" endorsed and issued into effect by the Financial Supervisory Commission of the Republic of China.

### Emphasis of Matter

As disclosed in Note 5 to the consolidated financial statements, the Company initial applied IFRS 16 "Lease" in 2019. Our review result is not modified in respect of this matter.

The engagement partners on the reviews resulting in this independent auditors' review report are Mr. Dien Sheng Chang and Mr. Ching Pin Shih.

*Dien-Sheng Chang*

*Ching Pin Shih*

Deloitte & Touche  
Taipei, Taiwan  
Republic of China

May 8, 2019

Notice to Readers

*The accompanying consolidated financial statements are intended only to present the consolidated financial position, financial performance and cash flows in accordance with accounting principles and practices generally accepted in the Republic of China and not those of any other jurisdictions. The standards, procedures and practices to review such consolidated financial statements are those generally applied in the Republic of China.*

*For the convenience of readers, the independent auditors' review report and the accompanying consolidated financial statements have been translated into English from the original Chinese version prepared and used in the Republic of China. If there is any conflict between the English version and the original Chinese version or any difference in the interpretation of the two versions, the Chinese-language independent auditors' review report and consolidated financial statements shall prevail.*

# CHUNGHWA TELECOM CO., LTD. AND SUBSIDIARIES

## CONSOLIDATED BALANCE SHEETS (In Thousands of New Taiwan Dollars)

ASSETS	March 31, 2019 (Reviewed)		December 31, 2018 (Audited)		March 31, 2018 (Reviewed)	
	Amount	%	Amount	%	Amount	%
<b>CURRENT ASSETS</b>						
Cash and cash equivalents (Note 6)	\$ 37,228,202	8	\$ 27,644,780	6	\$ 31,529,327	7
Financial assets at fair value through profit or loss (Note 7)	-	-	-	-	34	-
Hedging financial assets (Note 20)	-	-	1,069	-	47	-
Contract assets (Note 28)	4,606,104	1	4,868,728	1	6,258,807	2
Trade notes and accounts receivable, net (Note 9)	27,524,272	6	30,075,503	7	29,999,086	6
Receivables from related parties (Note 36)	18,251	-	24,270	-	28,531	-
Inventories (Notes 10 and 37)	13,904,329	3	15,120,715	3	11,079,728	2
Prepayments (Notes 5, 11 and 36)	4,855,305	1	1,872,984	-	5,535,061	1
Other current monetary assets (Note 12)	7,169,247	1	9,504,203	2	5,394,128	1
Other current assets (Notes 19 and 37)	2,925,849	1	2,576,084	1	2,245,629	-
<b>Total current assets</b>	<b>98,231,559</b>	<b>21</b>	<b>91,688,336</b>	<b>20</b>	<b>92,070,378</b>	<b>19</b>
<b>NONCURRENT ASSETS</b>						
Financial assets at fair value through profit or loss (Note 7)	511,274	-	517,362	-	-	-
Financial assets at fair value through other comprehensive income (Note 8)	6,774,106	1	6,932,503	2	7,305,255	2
Investments accounted for using equity method (Note 14)	3,024,908	1	2,944,890	1	2,603,503	1
Contract assets (Note 28)	2,394,383	-	2,343,958	-	3,588,239	1
Property, plant and equipment (Notes 5, 15 and 37)	284,681,139	59	288,914,228	61	284,977,119	61
Right-of-use assets (Notes 3, 4, 5 and 16)	11,710,079	2	-	-	-	-
Investment properties (Note 17)	8,277,484	2	8,287,212	2	8,048,154	2
Intangible assets (Note 18)	49,934,152	11	50,943,682	11	53,832,505	11
Deferred income tax assets (Notes 3 and 5)	3,557,699	1	3,553,856	1	3,250,266	1
Incremental costs of obtaining contracts (Note 28)	1,117,334	-	1,335,030	-	2,283,014	-
Net defined benefit assets (Note 3)	1,088,263	-	1,164,088	-	1,288,997	-
Prepayments (Notes 5, 11 and 36)	2,931,109	1	3,463,337	1	3,411,968	1
Other noncurrent assets (Notes 19, 37 and 38)	5,798,112	1	5,180,222	1	5,434,158	1
<b>Total noncurrent assets</b>	<b>381,800,042</b>	<b>79</b>	<b>375,580,368</b>	<b>80</b>	<b>376,023,178</b>	<b>81</b>
<b>TOTAL</b>	<b>\$ 480,031,601</b>	<b>100</b>	<b>\$ 467,268,704</b>	<b>100</b>	<b>\$ 468,093,556</b>	<b>100</b>
<b>LIABILITIES AND EQUITY</b>						
<b>CURRENT LIABILITIES</b>						
Short-term loans (Note 21)	\$ 175,000	-	\$ 100,000	-	\$ 170,000	-
Financial liabilities at fair value through profit or loss (Note 7)	2,219	-	1,114	-	1,031	-
Hedging derivative financial liabilities (Note 20)	2,719	-	-	-	-	-
Contract liabilities (Notes 5 and 28)	12,417,476	3	10,687,772	2	8,654,115	2
Trade notes and accounts payable (Note 23)	14,948,306	4	20,464,792	5	14,695,321	3
Payables to related parties (Note 36)	361,333	-	917,951	-	414,752	-
Current tax liabilities (Note 3)	6,276,099	1	4,390,203	1	8,702,753	2
Lease liabilities (Notes 3, 4, 5, 16 and 36)	3,500,021	1	-	-	-	-
Other payables (Notes 5 and 24)	20,293,306	4	23,315,383	5	21,575,325	5
Provisions (Note 25)	131,367	-	128,200	-	100,012	-
Other current liabilities (Note 5)	1,051,655	-	1,381,606	-	1,299,977	-
<b>Total current liabilities</b>	<b>59,159,501</b>	<b>13</b>	<b>61,387,021</b>	<b>13</b>	<b>55,613,286</b>	<b>12</b>
<b>NONCURRENT LIABILITIES</b>						
Contract liabilities (Notes 5 and 28)	6,324,795	1	2,595,149	1	2,384,343	1
Long-term loans (Notes 22 and 37)	1,600,000	-	1,600,000	-	1,600,000	-
Deferred income tax liabilities (Notes 3 and 5)	1,984,867	-	1,991,843	-	2,064,694	-
Provisions (Note 25)	79,142	-	78,627	-	79,272	-
Lease liabilities (Notes 3, 4, 5, 16 and 36)	6,353,362	2	-	-	-	-
Customers' deposits (Note 36)	4,646,233	1	4,716,571	1	4,559,868	1
Net defined benefit liabilities (Note 3)	3,579,648	1	3,533,936	1	2,001,699	-
Other noncurrent liabilities (Note 5)	1,400,139	-	4,793,237	1	4,537,157	1
<b>Total noncurrent liabilities</b>	<b>25,968,186</b>	<b>5</b>	<b>19,309,363</b>	<b>4</b>	<b>17,227,033</b>	<b>3</b>
<b>Total liabilities</b>	<b>85,127,687</b>	<b>18</b>	<b>80,696,384</b>	<b>17</b>	<b>72,840,319</b>	<b>15</b>
<b>EQUITY ATTRIBUTABLE TO STOCKHOLDERS OF THE PARENT (Notes 5, 13 and 27)</b>						
Common stocks	77,574,465	16	77,574,465	17	77,574,465	17
Additional paid-in capital	171,135,080	36	171,136,764	36	169,478,964	36
Retained earnings						
Legal reserve	77,574,465	16	77,574,465	17	77,574,465	17
Special reserve	2,675,419	1	2,675,419	1	2,680,823	1
Unappropriated earnings	55,446,604	11	47,141,345	10	58,529,134	12
Total retained earnings	135,696,488	28	127,391,229	28	138,784,422	30
Other adjustments	309,142	-	459,914	-	417,073	-
<b>Total equity attributable to stockholders of the parent</b>	<b>384,715,175</b>	<b>80</b>	<b>376,562,372</b>	<b>81</b>	<b>386,254,924</b>	<b>83</b>
<b>NONCONTROLLING INTERESTS (Notes 5, 13 and 27)</b>	<b>10,188,739</b>	<b>2</b>	<b>10,009,948</b>	<b>2</b>	<b>8,998,313</b>	<b>2</b>
<b>Total equity</b>	<b>394,903,914</b>	<b>82</b>	<b>386,572,320</b>	<b>83</b>	<b>395,253,237</b>	<b>85</b>
<b>TOTAL</b>	<b>\$ 480,031,601</b>	<b>100</b>	<b>\$ 467,268,704</b>	<b>100</b>	<b>\$ 468,093,556</b>	<b>100</b>

The accompanying notes are an integral part of the consolidated financial statements.

# CHUNGHWA TELECOM CO., LTD. AND SUBSIDIARIES

## CONSOLIDATED STATEMENTS OF COMPREHENSIVE INCOME (In Thousands of New Taiwan Dollars, Except Earnings Per Share) (Reviewed, Not Audited)

	Three Months Ended March 31			
	2019		2018	
	Amount	%	Amount	%
REVENUES (Notes 28, 36 and 41)	\$ 51,331,161	100	\$ 53,632,358	100
OPERATING COSTS (Notes 10, 26, 28, 29, 36 and 41)	<u>33,480,788</u>	<u>65</u>	<u>34,450,367</u>	<u>64</u>
GROSS PROFIT	<u>17,850,373</u>	<u>35</u>	<u>19,181,991</u>	<u>36</u>
OPERATING EXPENSES (Notes 26, 29, 36 and 41)				
Marketing	5,407,891	11	5,652,814	11
General and administrative	1,171,158	2	1,190,974	2
Research and development	920,959	2	925,504	2
Expected credit loss (reversal of credit loss)	<u>(55,953)</u>	<u>-</u>	<u>397,920</u>	<u>1</u>
Total operating expenses	<u>7,444,055</u>	<u>15</u>	<u>8,167,212</u>	<u>16</u>
OTHER INCOME AND EXPENSES (Note 29)	<u>(4,505)</u>	<u>-</u>	<u>(71,322)</u>	<u>-</u>
INCOME FROM OPERATIONS	<u>10,401,813</u>	<u>20</u>	<u>10,943,457</u>	<u>20</u>
NON-OPERATING INCOME AND EXPENSES				
Interest income	52,603	-	38,919	-
Other income (Notes 29 and 36)	56,346	-	56,160	-
Other gains and losses (Notes 29 and 36)	(19,368)	-	(33,288)	-
Interest expenses (Notes 16 and 36)	(25,844)	-	(4,386)	-
Share of the profit of associates accounted for using equity method (Note 14)	<u>79,173</u>	<u>-</u>	<u>82,648</u>	<u>-</u>
Total non-operating income and expenses	<u>142,910</u>	<u>-</u>	<u>140,053</u>	<u>-</u>
INCOME BEFORE INCOME TAX	10,544,723	20	11,083,510	20
INCOME TAX EXPENSE (Notes 3 and 30)	<u>2,018,010</u>	<u>4</u>	<u>2,086,006</u>	<u>4</u>
NET INCOME	<u>8,526,713</u>	<u>16</u>	<u>8,997,504</u>	<u>16</u>

(Continued)

# CHUNGHWA TELECOM CO., LTD. AND SUBSIDIARIES

## CONSOLIDATED STATEMENTS OF COMPREHENSIVE INCOME (In Thousands of New Taiwan Dollars, Except Earnings Per Share) (Reviewed, Not Audited)

	Three Months Ended March 31			
	2019		2018	
	Amount	%	Amount	%
TOTAL OTHER COMPREHENSIVE INCOME (LOSS)				
Items that will not be reclassified to profit or loss:				
Unrealized gain or loss on investments in equity instruments at fair value through other comprehensive income (Note 35)	\$ (158,988)	-	\$ (234,132)	-
Gain or loss on hedging instruments subject to basis adjustment (Note 20)	(3,788)	-	897	-
Income tax benefit relating to items that will not be reclassified to profit or loss (Note 30)	<u>-</u>	<u>-</u>	<u>207,269</u>	<u>-</u>
	<u>(162,776)</u>	<u>-</u>	<u>(25,966)</u>	<u>-</u>
Items that may be reclassified subsequently to profit or loss:				
Exchange differences arising from the translation of the foreign operations	23,530	-	(51,924)	-
Share of exchange differences arising from the translation of the foreign operations of associates (Note 14)	<u>170</u>	<u>-</u>	<u>835</u>	<u>-</u>
	<u>23,700</u>	<u>-</u>	<u>(51,089)</u>	<u>-</u>
Total other comprehensive loss, net of income tax	<u>(139,076)</u>	<u>-</u>	<u>(77,055)</u>	<u>-</u>
TOTAL COMPREHENSIVE INCOME	<u>\$ 8,387,637</u>	<u>16</u>	<u>\$ 8,920,449</u>	<u>16</u>
NET INCOME ATTRIBUTABLE TO				
Stockholders of the parent	\$ 8,356,082	16	\$ 8,727,524	16
Noncontrolling interest	<u>170,631</u>	<u>-</u>	<u>269,980</u>	<u>-</u>
	<u>\$ 8,526,713</u>	<u>16</u>	<u>\$ 8,997,504</u>	<u>16</u>
COMPREHENSIVE INCOME ATTRIBUTABLE TO				
Stockholders of the parent	\$ 8,205,310	16	\$ 8,642,380	16
Noncontrolling interest	<u>182,327</u>	<u>-</u>	<u>278,069</u>	<u>-</u>
	<u>\$ 8,387,637</u>	<u>16</u>	<u>\$ 8,920,449</u>	<u>16</u>
EARNINGS PER SHARE (Note 31)				
Basic	<u>\$1.08</u>		<u>\$1.13</u>	
Diluted	<u>\$1.08</u>		<u>\$1.12</u>	

The accompanying notes are an integral part of the consolidated financial statements.

(Concluded)

**CHUNGHWA TELECOM CO., LTD. AND SUBSIDIARIES**

**CONSOLIDATED STATEMENTS OF CHANGES IN EQUITY**  
(In Thousands of New Taiwan Dollars)  
(Reviewed, Not Audited)

	Equity Attributable to Stockholders of the Parent (Notes 13, 20 and 27)										
	Common Stocks	Additional Paid-in Capital	Retained Earnings			Exchange Differences Arising from the Translation of the Foreign Operations	Other Adjustments		Total	Noncontrolling Interests (Notes 13 and 27)	Total Equity
			Legal Reserve	Special Reserve	Unappropriated Earnings		Unrealized Gain or Loss on Financial Assets at Fair Value Through Other Comprehensive Income	Gain or Loss on Hedging Instruments			
BALANCE, JANUARY 1, 2018	\$ 77,574,465	\$ 169,466,883	\$ 77,574,465	\$ 2,680,823	\$ 49,595,850	\$ (174,593)	\$ 883,420	\$ (850)	\$ 377,600,463	\$ 8,693,650	\$ 386,294,113
Change in additional paid-in capital from investments in associates accounted for using equity method	-	(38)	-	-	-	-	-	-	(38)	4	(34)
Net income for the three months ended March 31, 2018	-	-	-	-	8,727,524	-	-	-	8,727,524	269,980	8,997,504
Other comprehensive income (loss) for the three months ended March 31, 2018	-	-	-	-	205,760	(53,403)	(238,398)	897	(85,144)	8,089	(77,055)
Total comprehensive income for the three months ended March 31, 2018	-	-	-	-	8,933,284	(53,403)	(238,398)	897	8,642,380	278,069	8,920,449
Share-based payment transactions of subsidiaries	-	12,119	-	-	-	-	-	-	12,119	21,590	33,709
Net increase in noncontrolling interests	-	-	-	-	-	-	-	-	-	5,000	5,000
BALANCE, MARCH 31, 2018	<u>\$ 77,574,465</u>	<u>\$ 169,478,964</u>	<u>\$ 77,574,465</u>	<u>\$ 2,680,823</u>	<u>\$ 58,529,134</u>	<u>\$ (227,996)</u>	<u>\$ 645,022</u>	<u>\$ 47</u>	<u>\$ 386,254,924</u>	<u>\$ 8,998,313</u>	<u>\$ 395,253,237</u>
BALANCE, JANUARY 1, 2019	\$ 77,574,465	\$ 171,136,764	\$ 77,574,465	\$ 2,675,419	\$ 47,141,345	\$ (79,427)	\$ 538,272	\$ 1,069	\$ 376,562,372	\$ 10,009,948	\$ 386,572,320
Effect of retrospective application (Note 5)	-	-	-	-	(50,823)	-	-	-	(50,823)	(19,603)	(70,426)
BALANCE, JANUARY 1, 2019 AS ADJUSTED	77,574,465	171,136,764	77,574,465	2,675,419	47,090,522	(79,427)	538,272	1,069	376,511,549	9,990,345	386,501,894
Change in additional paid-in capital from investments in associates accounted for using equity method	-	(872)	-	-	-	-	-	-	(872)	497	(375)
Net income for the three months ended March 31, 2019	-	-	-	-	8,356,082	-	-	-	8,356,082	170,631	8,526,713
Other comprehensive income (loss) for the three months ended March 31, 2019	-	-	-	-	-	15,223	(162,207)	(3,788)	(150,772)	11,696	(139,076)
Total comprehensive income for the three months ended March 31, 2019	-	-	-	-	8,356,082	15,223	(162,207)	(3,788)	8,205,310	182,327	8,387,637
Share-based payment transactions of subsidiaries	-	(812)	-	-	-	-	-	-	(812)	15,570	14,758
BALANCE, MARCH 31, 2019	<u>\$ 77,574,465</u>	<u>\$ 171,135,080</u>	<u>\$ 77,574,465</u>	<u>\$ 2,675,419</u>	<u>\$ 55,446,604</u>	<u>\$ (64,204)</u>	<u>\$ 376,065</u>	<u>\$ (2,719)</u>	<u>\$ 384,715,175</u>	<u>\$ 10,188,739</u>	<u>\$ 394,903,914</u>

The accompanying notes are an integral part of the consolidated financial statements.

# CHUNGHWA TELECOM CO., LTD. AND SUBSIDIARIES

## CONSOLIDATED STATEMENTS OF CASH FLOWS

(In Thousands of New Taiwan Dollars)

(Reviewed, Not Audited)

	<b>Three Months Ended March 31</b>	
	<b>2019</b>	<b>2018</b>
<b>CASH FLOWS FROM OPERATING ACTIVITIES</b>		
Income before income tax	\$ 10,544,723	\$ 11,083,510
Adjustments to reconcile income before income tax to net cash provided by operating activities:		
Depreciation	7,693,369	6,895,427
Amortization	1,064,194	1,069,983
Amortization of incremental costs of obtaining contracts	376,902	452,276
Expected credit losses (reversal of credit loss)	(55,953)	397,920
Interest expenses	25,844	4,386
Interest income	(52,603)	(38,919)
Compensation cost of share-based payment transactions	430	410
Share of profit of associates accounted for using equity method	(79,173)	(82,648)
Loss on disposal of property, plant and equipment	4,505	20,572
Gain on disposal of financial instruments	-	(5,754)
Provision for inventory and obsolescence	95,682	32,476
Impairment loss on intangible assets	-	50,750
Valuation loss on financial assets and liabilities at fair value through profit or loss, net	7,193	419
Others	(23,594)	(22,054)
Changes in operating assets and liabilities:		
Decrease (increase) in:		
Financial assets mandatorily measured at fair value through profit or loss	-	59,642
Contract assets	212,752	135,004
Trade notes and accounts receivable	2,615,369	1,593,019
Accounts receivable from related parties	6,019	20,836
Inventories	1,120,704	(2,404,675)
Prepayments	(3,108,829)	(3,193,139)
Other current monetary assets	(42,281)	78,794
Other current assets	(349,765)	69,215
Incremental cost of obtaining contracts	(159,206)	(261,147)
Increase (decrease) in:		
Contract liabilities	1,762,269	408,284
Trade notes and accounts payable	(5,516,944)	(4,701,135)
Payables to related parties	(556,618)	(269,433)
Other payables	(2,240,856)	(2,256,525)
Provisions	3,682	(401)
Other current liabilities	(107,442)	181,426
Net defined benefit plans	121,537	(1,977,888)
Cash generated from operations	13,361,910	7,340,631
Interest paid	(25,844)	(4,386)
Income tax paid	(117,351)	(12,269)
Net cash provided by operating activities	<u>13,218,715</u>	<u>7,323,976</u>

(Continued)



# CHUNGHWA TELECOM CO., LTD. AND SUBSIDIARIES

## CONSOLIDATED STATEMENTS OF CASH FLOWS

(In Thousands of New Taiwan Dollars)

(Reviewed, Not Audited)

	<b>Three Months Ended March 31</b>	
	<b>2019</b>	<b>2018</b>
<b>CASH FLOWS FROM INVESTING ACTIVITIES</b>		
Acquisition of time deposits and negotiable certificates of deposit with maturities of more than three months	\$ (1,563,562)	\$ (2,316,703)
Proceeds from disposal of time deposits and negotiable certificates of deposit with maturities of more than three months	3,931,264	2,118,012
Proceeds from capital reduction of investments accounted for using equity method	-	19,184
Acquisition of property, plant and equipment	(4,492,381)	(4,390,273)
Proceeds from disposal of property, plant and equipment	9,618	9,932
Acquisition of intangible assets	(54,332)	(69,923)
Acquisition of investment properties	-	(5,557)
Increase in other noncurrent assets	(618,400)	(43,084)
Interest received	<u>58,028</u>	<u>41,437</u>
Net cash used in investing activities	<u>(2,729,765)</u>	<u>(4,636,975)</u>
<b>CASH FLOWS FROM FINANCING ACTIVITIES</b>		
Proceeds from short-term loans	300,000	200,000
Repayment of short-term loans	(225,000)	(100,000)
Decrease in customers' deposits	(78,673)	(101,178)
Payments for the principal of lease liabilities	(1,019,347)	-
Decrease in other noncurrent liabilities	89,809	(37,637)
Change in other noncontrolling interests	<u>14,328</u>	<u>38,299</u>
Net cash used in financing activities	<u>(918,883)</u>	<u>(516)</u>
<b>EFFECT OF EXCHANGE RATE CHANGES ON CASH AND CASH EQUIVALENTS</b>	<u>13,355</u>	<u>17,907</u>
<b>NET INCREASE IN CASH AND CASH EQUIVALENTS</b>	9,583,422	2,704,392
<b>CASH AND CASH EQUIVALENTS, BEGINNING OF PERIOD</b>	<u>27,644,780</u>	<u>28,824,935</u>
<b>CASH AND CASH EQUIVALENTS, END OF PERIOD</b>	<u>\$ 37,228,202</u>	<u>\$ 31,529,327</u>

The accompanying notes are an integral part of the consolidated financial statements.

(Concluded)

# CHUNGHWA TELECOM CO., LTD. AND SUBSIDIARIES

## NOTES TO CONSOLIDATED FINANCIAL STATEMENTS THREE MONTHS ENDED MARCH 31, 2019 AND 2018 (In Thousands of New Taiwan Dollars, Unless Stated Otherwise) (Reviewed, Not Audited)

---

### 1. GENERAL

Chunghwa Telecom Co., Ltd. (“Chunghwa”) was incorporated on July 1, 1996 in the Republic of China (“ROC”) pursuant to the Article 30 of the Telecommunications Act. Chunghwa is a company limited by shares and, prior to August 2000, was wholly owned by the Ministry of Transportation and Communications (“MOTC”). Prior to July 1, 1996, the current operations of Chunghwa were carried out under the Directorate General of Telecommunications (“DGT”). The DGT was established by the MOTC in June 1943 to take primary responsibility in the development of telecommunications infrastructure and to formulate policies related to telecommunications. On July 1, 1996, the telecom operations of the DGT were spun-off as Chunghwa which continues to carry out the business and the DGT continues to be the industry regulator.

Effective August 12, 2005, the MOTC completed the process of privatizing Chunghwa by reducing the government ownership to below 50% in various stages. In July 2000, Chunghwa received approval from the Securities and Futures Commission (the “SFC”) for a domestic initial public offering and its common stocks were listed and traded on the Taiwan Stock Exchange (the “TWSE”) on October 27, 2000. Certain of Chunghwa’s common stocks were sold, in connection with the foregoing privatization plan, in domestic public offerings at various dates from August 2000 to July 2003. Certain of Chunghwa’s common stocks were also sold in an international offering of securities in the form of American Depositary Shares (“ADS”) on July 17, 2003 and were listed and traded on the New York Stock Exchange (the “NYSE”). The MOTC sold common stocks of Chunghwa by auction in the ROC on August 9, 2005 and completed the second international offering on August 10, 2005. Upon completion of the share transfers associated with these offerings on August 12, 2005, the MOTC owned less than 50% of the outstanding shares of Chunghwa and completed the privatization plan.

Chunghwa together with its subsidiaries are hereinafter referred to collectively as the “Company”.

The consolidated financial statements are presented in Chunghwa’s functional currency, New Taiwan dollars.

### 2. APPROVAL OF FINANCIAL STATEMENTS

The consolidated financial statements were approved by the Board of Directors on May 8, 2019.

### 3. SUMMARY OF SIGNIFICANT ACCOUNTING POLICIES

Except for the following items, the accounting policies applied in these consolidated financial statements are consistent with those applied in the consolidated financial statements for the year ended December 31, 2018. Please refer to the consolidated financial statements for the year ended December 31, 2018 for the details.

## Statement of Compliance

The accompanying consolidated financial statements have been prepared in conformity with the Regulations Governing the Preparation of Financial Reports by Securities Issuers and International Accounting Standard 34 “Interim Financial Reporting” endorsed and issued into effect by the Financial Supervisory Commission (the “FSC”). The consolidated financial statements do not present all the disclosures required for a complete set of annual consolidated financial statements as required by International Financial Reporting Standards (IFRS), International Accounting Standards (IAS), International Financing Reporting Interpretations Committee (IFRIC) and SIC Interpretation (SIC) (collectively, the “IFRSs”) endorsed and issued into effect by the FSC.

## Basis of Consolidation

The detail information of the subsidiaries at the end of reporting period was as follows:

Name of Investor	Name of Investee	Main Businesses and Products	Percentage of Ownership			Note
			March 31, 2019	December 31, 2018	March 31, 2018	
Chunghwa Telecom Co., Ltd.	Senao International Co., Ltd. (“SENAO”)	Handset and peripherals retailer, sales of CHT mobile phone plans as an agent	28	28	29	a.
	Light Era Development Co., Ltd. (“LED”)	Planning and development of real estate and intelligent buildings, and property management	100	100	100	
	Donghwa Telecom Co., Ltd. (“DHT”)	International private leased circuit, IP VPN service, and IP transit services	100	100	100	
	Chunghwa Telecom Singapore Pte., Ltd. (“CHTS”)	International private leased circuit, IP VPN service, and IP transit services	100	100	100	
	Chunghwa System Integration Co., Ltd. (“CHSI”)	Providing system integration services and telecommunications equipment	100	100	100	
	Chunghwa Investment Co., Ltd. (“CHI”)	Investment	89	89	89	
	CHIEF Telecom Inc. (“CHIEF”)	Network integration, internet data center (“IDC”), communications integration and cloud application services	57	57	66	b.
	CHYP Multimedia Marketing & Communications Co., Ltd. (“CHYP”)	Digital information supply services and advertisement services	100	100	100	
	Prime Asia Investments Group Ltd. (B.V.I.) (“Prime Asia”)	Investment	100	100	100	
	Spring House Entertainment Tech. Inc. (“SHE”)	Software design services, internet contents production and play, and motion picture production and distribution	56	56	56	
	Chunghwa Telecom Global, Inc. (“CHTG”)	International private leased circuit, internet services, and transit services	100	100	100	
	Chunghwa Telecom Vietnam Co., Ltd. (“CHTV”)	Intelligent energy saving solutions, international circuit, and information and communication technology (“ICT”) services.	100	100	100	
	Smartfun Digital Co., Ltd. (“SFD”)	Providing diversified family education digital services	65	65	65	
	Chunghwa Telecom Japan Co., Ltd. (“CHTJ”)	International private leased circuit, IP VPN service, and IP transit services	100	100	100	
	Chunghwa Sochamp Technology Inc. (“CHST”)	Design, development and production of Automatic License Plate Recognition software and hardware	51	51	51	

(Continued)

Name of Investor	Name of Investee	Main Businesses and Products	Percentage of Ownership			Note
			March 31, 2019	December 31, 2018	March 31, 2018	
	Honghwa International Co., Ltd. (“HHI”)	Telecommunications engineering, sales agent of mobile phone plan application and other business services	100	100	100	
	Chunghwa Leading Photonics Tech Co., Ltd. (“CLPT”)	Production and sale of electronic components and finished products	75	75	75	
	Chunghwa Telecom (Thailand) Co., Ltd. (“CHTT”)	International private leased circuit, IP VPN service, ICT and cloud VAS services	100	100	100	
	CHT Security Co., Ltd. (“CHTSC”)	Computing equipment installation, wholesale of computing and business machinery equipment and software, management consulting services, data processing services, digital information supply services and internet identify services	80	80	80	
Senao International Co., Ltd.	Senao International (Samoa) Holding Ltd. (“SIS”)	International investment	100	100	100	
	Youth Co., Ltd. (“Youth”)	Sale of information and communication technologies products	93	93	89	c.
	Aval Technologies Co., Ltd. (“Aval”)	Sale of information and communication technologies products	100	100	100	
	SENYOUNG Insurance Agent Co., Ltd. (“SENYOUNG”)	Property and liability insurance agency	100	100	100	
Youth Co., Ltd.	ISPOT Co., Ltd. (“ISPOT”)	Sale of information and communication technologies products	100	100	100	
	Youyi Co., Ltd. (“Youyi”)	Maintenance of information and communication technologies products	100	100	100	
Light Era Development Co., Ltd.	Taoyuan Asia Silicon Valley Innovation Co., Ltd. (“TASVI”)	Development of real estate	60	60	60	d.
CHIEF Telecom Inc.	Unigate Telecom Inc. (“Unigate”)	Telecommunications and internet service	100	100	100	
	Chief International Corp. (“CIC”)	Telecommunications and internet service	100	100	100	
	Shanghai Chief Telecom Co., Ltd. (“SCT”)	Telecommunications and internet service	49	49	49	
Chunghwa System Integration Co., Ltd.	Concord Technology Co., Ltd. (“Concord”)	Investment	-	-	-	e.
Chunghwa Investment Co., Ltd.	Chunghwa Precision Test Tech. Co., Ltd. (“CHPT”)	Production and sale of semiconductor testing components and printed circuit board	34	34	38	f.
Chunghwa Precision Test Tech. Co., Ltd.	Chunghwa Precision Test Tech. USA Corporation (“CHPT (US)”)	Design and after-sale services of semiconductor testing components and printed circuit board	100	100	100	
	CHPT Japan Co., Ltd. (“CHPT (JP)”)	Related services of electronic parts, machinery processed products and printed circuit board	100	100	100	
	Chunghwa Precision Test Tech. International, Ltd. (“CHPT (International)”)	Wholesale and retail of electronic materials, and investment	100	100	100	

(Continued)

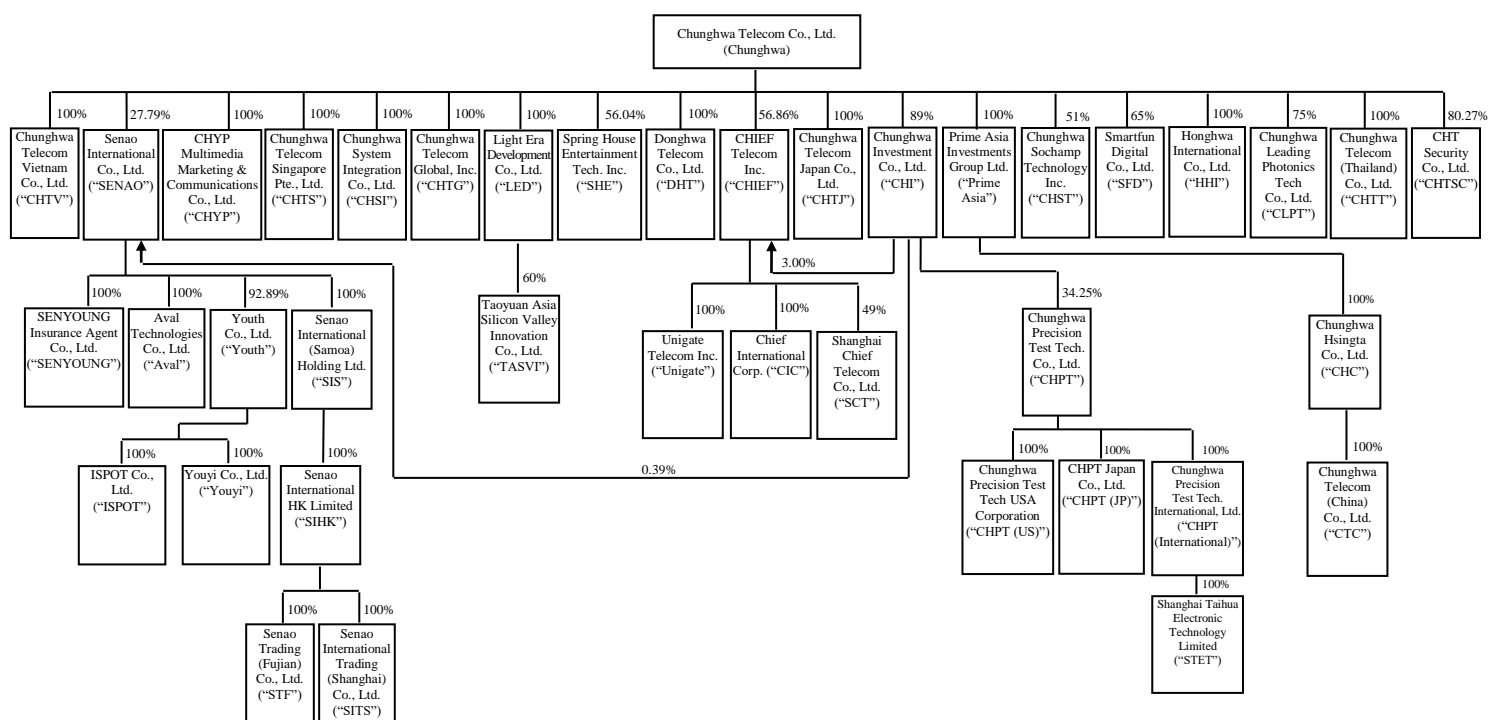
Name of Investor	Name of Investee	Main Businesses and Products	Percentage of Ownership			Note
			March 31, 2019	December 31, 2018	March 31, 2018	
Senao International (Samoa) Holding Ltd.	Senao International HK Limited (“SIHK”)	International investment	100	100	100	
Senao International HK Limited	Senao Trading (Fujian) Co., Ltd. (“STF”)	Sale of information and communication technologies products	100	100	100	g.
	Senao International Trading (Shanghai) Co., Ltd. (“SITS”)	Sale of information and communication technologies products	100	100	100	
	Senao International Trading (Shanghai) Co., Ltd. (“SEITS”)	Maintenance of information and communication technologies products	-	-	-	h.
	Senao International Trading (Jiangsu) Co., Ltd. (“SITJ”)	Sale of information and communication technologies products	-	100	100	i.
Prime Asia Investments Group Ltd. (B.V.I.)	Chunghwa Hsingta Co., Ltd. (“CHC”)	Investment	100	100	100	
Chunghwa Hsingta Co., Ltd. (“CHC”)	Chunghwa Telecom (China) Co., Ltd. (“CTC”)	Integrated information and communication solution services for enterprise clients, and intelligent energy network service	100	100	100	
	Jiangsu Zhenhua Information Technology Company, LLC. (“JZIT”)	Providing intelligent energy saving solution and intelligent buildings services	-	-	75	j.
Chunghwa Precision Test Tech. International, Ltd.	Shanghai Taihua Electronic Technology Limited (“STET”)	Design of printed circuit board and related consultation service	100	100	100	

(Concluded)

- a. SENAO transferred its treasury stock to employees in June 2018 and the Company’s ownership interest in SENAO decreased to 28.18% as of December 31, 2018 and March 31, 2019. As Chunghwa controls five out of nine seats of the Board of Directors of SENAO through the support of large beneficial stockholders, the accounts of SENAO are included in the consolidated financial statements.
- b. CHIEF issued new shares in March 2019, March and November 2018 as its employees exercised their options. In addition, Chunghwa and CHI disposed some shares of CHIEF in May 2018 before CHIEF traded its shares on the General Stock Market of the Taipei Exchange according to the local requirements. Furthermore, Chunghwa and CHI did not participate in the capital increase of CHIEF in June 2018. Therefore, the Company’s equity ownership interest in CHIEF decreased to 60.23% as of December 31, 2018 and 59.86% as of March 31, 2019, respectively.
- c. SENAO subscribed for all the shares in the capital increase of Youth in December 2018. Therefore, the Company’s equity ownership interest in Youth increased from 89% to 93%.
- d. LED invested 60% equity shares of Taoyuan Asia Silicon Valley Innovation Co., Ltd. (“TASVI”) in March 2018. TASVI was approved to end and dissolve its business in April 2019. The liquidation of TASVI is still in process.
- e. Concord was approved to end and dissolve its business in August 2017. The liquidation of Concord was completed in January 2018.

- f. CHI disposed some shares of CHPT from April to August 2018. Therefore, its ownership interest in CHPT decreased to 34.25% as of December 31, 2018 and March 31, 2019. However, considering the absolute and relative size of ownership interest, and the dispersion of shares owned by the other stockholders, the management concluded that the Company has a sufficiently dominant voting interest to direct the relevant activities; hence, CHPT is deemed as a subsidiary of the Company.
- g. STF was approved to end and dissolve its business in September 2018. The liquidation of STF is still in process.
- h. SEITS completed its liquidation in March 2018.
- i. SITJ completed its liquidation in March 2019.
- j. JZIT completed its liquidation in December 2018.

The following diagram presents information regarding the relationship and ownership percentages between Chunghwa and its subsidiaries as of March 31, 2019:



### Other Significant Accounting Policies

The Company initially applied IFRS 16 "Lease" on January 1, 2019, and elected not to restate the figures in comparative periods. Different accounting policies for each accounting period as a result of the application of new accounting standards are listed by year separately.

- a. Defined benefit retirement benefits

Pension cost for an interim period is calculated on a year-to-date basis by using the actuarially determined pension cost rate at the end of the prior financial year, adjusted for significant market fluctuations since that time and for other significant one-off events.

b. Taxation

Income tax expense represents the sum of the tax currently payable and deferred tax. Income taxes for interim period are assessed on an annual basis and calculated by applying to an interim period's pre-tax income the tax rate that would be applicable to expected total annual earnings. The effect of a change in tax rate resulting from a change in tax law is recognized in consistent with the accounting for the transaction itself for which the tax consequence arises from, and is recognized in profit or loss or other comprehensive income in full in the period in which the change in tax rate occurs.

The measurement of deferred tax assets and liabilities reflects the tax consequences that would follow from the manner in which the Company expects, at the end of the reporting period, to recover or settle the carrying amount of its assets and liabilities.

c. Leasing

2019

At inception of a contract, the Company assesses whether the contract is, or contains, a lease.

1) The Company as lessor

Rental income from operating leases is recognized on a straight-line basis over the term of the relevant lease.

2) The Company as lessee

The Company recognizes right-of-use assets and lease liabilities for all leases at the commencement date of a lease, except for lease payments for low-value assets are recognized as expenses on a straight-line basis over the lease terms accounted for applying recognition exemption.

Right-of-use assets are initially measured at cost, which comprises the initial measurement of lease liabilities and for lease payments made at or before the commencement date. Right-of-use assets are subsequently measured at cost less accumulated depreciation and accumulated impairment losses and adjusted for any remeasurement of the lease liabilities. Right-of-use assets are presented separately on the consolidated balance sheets.

Right-of-use assets are depreciated using the straight-line basis from the commencement dates to the earlier of the end of the useful lives of the right-of-use assets or the end of the lease terms.

Lease liabilities were initially measured at the present value of the lease payments, which comprise fixed payments, in-substance fixed payments, variable lease payments which depend on an index or a rate. The lease payments are discounted using the interest rate implicit in a lease, if that rate can be readily determined. If such rate cannot be readily determined, the lessee's incremental borrowing rate is used.

Lease liabilities are subsequently measured at amortized cost using the effective interest method, with interest expense recognized over the lease terms. When there is a change in a lease term or a change in future lease payments resulting from a change in an index or a rate used to determine those payments, the Company remeasures the lease liabilities with a corresponding adjustment to the right-of-use-assets. However, if the carrying amount of the right-of-use assets is reduced to zero, any remaining amount of the remeasurement is recognized in profit or loss. Lease liabilities are presented separately on the consolidated balance sheets.

Variable lease payments not depending on an index or a rate are recognized as expenses in the periods in which they are incurred.

#### 2018

##### 1) The Company as lessor

Rental income from operating leases is recognized on a straight-line basis over the term of the relevant lease.

##### 2) The Company as lessee

Operating lease payments are recognized as an expense on a straight-line basis over the lease term.

#### **4. CRITICAL ACCOUNTING JUDGMENTS AND KEY SOURCES OF ESTIMATION, UNCERTAINTY AND ASSUMPTION**

In the application of the Company's accounting policies, the management is required to make judgments, estimates and assumptions which are based on historical experience and other factors that are not readily apparent from other sources. Actual results may differ from these estimates.

The estimates and underlying assumptions are reviewed by the management on an ongoing basis. Revisions to accounting estimates are recognized in the period in which the estimate is revised if the revision affects only that period or in the period of the revision and future periods if the revision affects both current and future periods.

Except for the following items, for the critical accounting judgments and key sources of estimation, uncertainty and assumption applied in these consolidated financial statements, please refer to the consolidated financial statements for the year ended December 31, 2018.

##### **Lessees' incremental borrowing rates - 2019**

In determining a lessee's incremental borrowing rate used in discounting lease payments, a risk-free rate for relevant duration and the same currency is selected as a reference rate. The lessee's credit spread adjustments and lease specific adjustments are also taken into account.

#### **5. APPLICATION OF NEW AND REVISED STANDARDS AND INTERPRETATIONS**

##### a. Initial application of the amendments to the Regulations Governing the Preparation of Financial Reports by Securities Issuers and the IFRSs endorsed and issued into effect by the FSC

Except for the following, whenever applied, the initial application of the amendments to the Regulations Governing the Preparation of Financial Reports by Securities Issuers and the IFRSs issued by the International Accounting Standards Board and endorsed and issued into effect by the FSC (collectively, the "Taiwan-IFRSs") does not have material impacts on the Company's consolidated financial statements.

##### **IFRS 16 "Leases"**

IFRS 16 sets out the accounting standards for identifying leases and accounting treatments for lessors and lessees. It supersedes IAS 17 "Lease", IFRIC 4 - Determining Whether an Arrangement Contains a Lease and a number of related interpretations. Refer to Note 3 for information relating to the relevant accounting policies.



The Company reassesses whether a contract is, or contains, a lease in accordance with the definition of a lease under IFRS 16. Some contracts previously identified as containing a lease under IAS 17 and IFRIC 4 do not meet the definition of a lease under IFRS 16 and are accounted for in accordance with other accounting standards because the Company does not have the right to direct the use of the identified assets. Contracts that are reassessed as leases or containing a lease are accounted for in accordance with the transitional provisions under IFRS 16.

If the Company is a lessee, it shall recognize right-of-use assets and lease liabilities for all leases on the consolidated balance sheets except for those whose payments for low-value assets are recognized as expenses on a straight-line basis. On the consolidated statements of comprehensive income, the Company presents the depreciation expense charged on the right-of-use asset separately from the interest expense accrued on lease liability using the effective interest method. On the consolidated statements of cash flows, cash payments for the principal portion of lease liability are classified within financing activities; cash payments for interest portion are classified within operating activities. Before the application of IFRS 16, payments under operating lease contracts were recognized as expenses on a straight-line basis. Prepaid lease payments for use rights of leased assets were recognized as prepaid rents. Cash flows for operating leases were classified within operating activities on the statements of cash flows.

The Company does not make any adjustments for leases in which the Company is a lessor and accounts for those leases with the application of IFRS 16 starting from January 1, 2019.

The Company applied IFRS 16 retrospectively with the cumulative effect of the initial application of IFRS 16 recognized in retained earnings on January 1, 2019. Comparative financial information is not restated.

Lease liabilities are recognized on January 1, 2019 for leases previously classified as operating leases under IAS 17 and measured at the present value of the remaining lease payments, discounted using the lessee's incremental borrowing rate on January 1, 2019. Right-of-use assets are measured at the present value discounted using the aforementioned incremental borrowing rate as if IFRS 16 had been applied since the commencement date of leases. The Company applies IAS 36 for assessing impairment of right-of-use assets.

The lessee's weighted average incremental borrowing rate applied to lease liabilities recognized on January 1, 2019 is 0.85%. The difference between the (1) lease liabilities recognized and (2) future aggregate minimum lease payments of non-cancellable operating lease disclosed under IAS 17 on December 31, 2018 is explained as follows:

The future aggregate minimum lease payments of non-cancellable operating lease on December 31, 2018	\$ 10,557,854
Less: Recognition exemption for leases of low-value assets	<u>(3,263)</u>
Undiscounted amount on January 1, 2019	<u>\$ 10,554,591</u>
Discounted amount using the incremental borrowing rate on January 1, 2019	\$ 10,339,868
Add: Adjustments as a result of a different treatment of extension options	<u>189</u>
Lease liabilities recognized on January 1, 2019	<u>\$ 10,340,057</u>

The impact on assets, liabilities and equity as of January 1, 2019 from the initial application of IFRS 16 is set out as follows:

	<b>Carrying Amount as of January 1, 2019</b>	<b>Adjustments Arising from Initial Application of IFRS 16</b>	<b>Adjusted Carrying Amount as of January 1, 2019</b>
Prepayments - current	<u>\$ 1,872,984</u>	\$ (245,215)	<u>\$ 1,627,769</u>
Property, plant and equipment	<u>\$ 288,914,228</u>	(1,308,990)	<u>\$ 287,605,238</u>
Right-of-use assets	<u>\$ -</u>	12,163,063	<u>\$ 12,163,063</u>
Deferred income tax assets	<u>\$ 3,553,856</u>	25,588	<u>\$ 3,579,444</u>
Prepayments - noncurrent	<u>\$ 3,463,337</u>	<u>(413,521)</u>	<u>\$ 3,049,816</u>
Total effect on assets		<u>\$ 10,220,925</u>	
Contract liabilities - current	<u>\$ 10,687,772</u>	\$ 214,174	<u>\$ 10,901,946</u>
Lease liabilities - current	<u>\$ -</u>	3,394,119	<u>\$ 3,394,119</u>
Other payables	<u>\$ 23,315,383</u>	(48,712)	<u>\$ 23,266,671</u>
Other current liabilities	<u>\$ 1,381,606</u>	(214,174)	<u>\$ 1,167,432</u>
Contract liabilities - noncurrent	<u>\$ 2,595,149</u>	3,482,907	<u>\$ 6,078,056</u>
Deferred income tax liabilities	<u>\$ 1,991,843</u>	6	<u>\$ 1,991,849</u>
Lease liabilities - noncurrent	<u>\$ -</u>	6,945,938	<u>\$ 6,945,938</u>
Other noncurrent liabilities	<u>\$ 4,793,237</u>	<u>(3,482,907)</u>	<u>\$ 1,310,330</u>
Total effect on liabilities		<u>\$ 10,291,351</u>	
Unappropriated earnings	<u>\$ 47,141,345</u>	\$ (50,823)	<u>\$ 47,090,522</u>
Noncontrolling interests	<u>\$ 10,009,948</u>	<u>(19,603)</u>	<u>\$ 9,990,345</u>
Total effect on equity		<u>\$ (70,426)</u>	

- b. IFRSs issued by the IASB but not yet endorsed and issued into effect by the FSC

<b>New, Revised or Amended Standards and Interpretations</b>	<b>Effective Date Announced by IASB (Note 1)</b>
Amendments to IFRS 3	Definition of a Business
Amendments to IFRS 10 and IAS 28	Sale or Contribution of Assets between An Investor and Its Associate or Joint Venture
Amendments to IAS 1 and IAS 8	Definition of Materiality
	January 1, 2020 (Note 2)
	To be determined by IASB
	January 1, 2020 (Note 3)

Note 1: Unless stated otherwise, the above New IFRSs are effective for annual periods beginning on or after their respective effective dates.

Note 2: The Company shall apply these amendments to business combinations for which the acquisition date is on or after the beginning of the first annual reporting period beginning on or after January 1, 2020 and to asset acquisitions that occur on or after the beginning of that period.

Note 3: The Company shall apply these amendments prospectively in annual periods beginning on or after January 1, 2020.

As of the date the consolidated financial statements were authorized for issue, the Company is continuously assessing the possible impact that the application of above standards and interpretations will have on the Company's financial position and operating result and will disclose the relevant impact when the assessment is completed.

## 6. CASH AND CASH EQUIVALENTS

	March 31, 2019	December 31, 2018	March 31, 2018
Cash			
Cash on hand	\$ 413,478	\$ 462,719	\$ 205,096
Bank deposits	<u>9,199,415</u>	<u>10,574,697</u>	<u>8,895,661</u>
	<u>9,612,893</u>	<u>11,037,416</u>	<u>9,100,757</u>
Cash equivalents (investments with maturities of less than three months)			
Commercial paper	12,303,571	6,143,672	12,866,655
Negotiable certificates of deposit	12,400,000	7,600,000	7,200,000
Time deposits	<u>2,911,738</u>	<u>2,863,692</u>	<u>2,361,915</u>
	<u>27,615,309</u>	<u>16,607,364</u>	<u>22,428,570</u>
	<u>\$ 37,228,202</u>	<u>\$ 27,644,780</u>	<u>\$ 31,529,327</u>

The annual yield rates of bank deposits, commercial paper, negotiable certificates of deposit and time deposits as of balance sheet dates were as follows:

	March 31, 2019	December 31, 2018	March 31, 2018
Bank deposits	0.00%-0.85%	0.00%-0.50%	0.00%-0.38%
Commercial paper	0.46%-0.52%	0.47%-0.57%	0.35%-0.40%
Negotiable certificates of deposit	0.54%-0.63%	0.55%-0.60%	0.40%-0.52%
Time deposits	0.09%-4.40%	0.09%-4.40%	0.03%-4.50%

## 7. FINANCIAL INSTRUMENTS AT FAIR VALUE THROUGH PROFIT OR LOSS

	March 31, 2019	December 31, 2018	March 31, 2018
<u>Financial assets-current</u>			
Mandatorily measured at FVTPL			
Derivatives (not designated for hedge)			
Forward exchange contracts	<u>\$ -</u>	<u>\$ -</u>	<u>\$ 34</u>
<u>Financial assets-noncurrent</u>			
Mandatorily measured at FVTPL			
Non-derivatives			
Non-listed stocks - domestic	\$ 287,259	\$ 292,910	\$ -
Non-listed stocks - foreign	<u>224,015</u>	<u>224,452</u>	<u>-</u>
	<u>\$ 511,274</u>	<u>\$ 517,362</u>	<u>\$ -</u>

(Continued)

	<b>March 31, 2019</b>	<b>December 31, 2018</b>	<b>March 31, 2018</b>
<u>Financial liabilities-current</u>			
Held for trading			
Derivatives (not designated for hedge)			
Forward exchange contracts	\$ <u>2,219</u>	\$ <u>1,114</u>	\$ <u>1,031</u> (Concluded)

Outstanding forward exchange contracts not designated for hedge as of balance sheet dates were as follows:

	<b>Currency</b>	<b>Maturity Period</b>	<b>Contract Amount (Thousands)</b>
<u>March 31, 2019</u>			
Forward exchange contracts - buy	EUR/NT\$	2019.06	EUR6,050/NT\$212,082
Forward exchange contracts - buy	US\$/NT\$	2019.04	US\$300/NT\$9,245
<u>December 31, 2018</u>			
Forward exchange contracts - buy	EUR/NT\$	2019.03-06	EUR5,452/NT\$192,734
Forward exchange contracts - buy	US\$/NT\$	2019.01	US\$2,020/NT\$62,252
<u>March 31, 2018</u>			
Forward exchange contracts - buy	EUR/NT\$	2018.06-09	EUR4,390/NT\$158,199
Forward exchange contracts - buy	US\$/NT\$	2018.04	US\$5,863/NT\$170,903

The Company entered into the above forward exchange contracts to manage its exposure to foreign currency risk due to fluctuations in exchange rates. However, the aforementioned derivatives did not meet the criteria for hedge accounting.

## 8. FINANCIAL ASSETS AT FAIR VALUE THROUGH OTHER COMPREHENSIVE INCOME - NONCURRENT

	<b>March 31, 2019</b>	<b>December 31, 2018</b>	<b>March 31, 2018</b>
Domestic investments			
Listed stocks	\$ 2,599,314	\$ 2,899,843	\$ 2,847,119
Non-listed stocks	3,997,088	3,901,053	4,168,039
Foreign investments			
Non-listed stocks	<u>177,704</u>	<u>131,607</u>	<u>290,097</u>
	<u>\$ 6,774,106</u>	<u>\$ 6,932,503</u>	<u>\$ 7,305,255</u>

The Company holds the above foreign and domestic stocks for medium to long-term strategic purposes and expects to profit from long-term investment. Accordingly, the management elected to designate these investments in equity instruments at FVOCI as they believe that recognizing short-term fair value fluctuations of these investments in profit or loss is not consistent with the Company's strategy of holding these investments for long-term purposes.

## 9. TRADE NOTES AND ACCOUNTS RECEIVABLE, NET

	March 31, 2019	December 31, 2018	March 31, 2018
Trade notes and accounts receivable	\$ 30,074,822	\$ 32,677,558	\$ 32,386,539
Less: Loss allowance	<u>(2,550,550)</u>	<u>(2,602,055)</u>	<u>(2,387,453)</u>
	<u>\$ 27,524,272</u>	<u>\$ 30,075,503</u>	<u>\$ 29,999,086</u>

The average credit terms range from 30 to 90 days.

The Company serves a large consumer base for telecommunications business; therefore, the concentration of credit risk is limited. When having transactions with customers, the Company considers the record of arrears in the past. In addition, the Company may also collect some telecommunication charges in advance to reduce the payment arrears in subsequent periods.

The Company adopts a policy of dealing with counterparties with certain credit ratings for project business and to obtain collateral where necessary to mitigate the risk of loss arising from default. Credit rating information is provided by independent rating agencies where available and, if such credit rating information is not available, the Company uses other publicly available financial information and its own historical transaction experience to rate its major customers. The Company continues to monitor the credit exposure and credit ratings of its counterparties and spread the credit risk amongst qualified counterparties.

In order to mitigate credit risk, the management of the Company has delegated a team responsible for determining credit limits, credit approvals and other monitoring procedures to ensure the recoverability of receivables. In addition, the Company reviews the recoverable amount of receivables at balance sheet dates to ensure that adequate allowance is provided for possible irrecoverable amounts. In this regard, the management believes the Company's credit risk could be reasonably reduced.

The Company applies the simplified approach to providing for expected credit losses prescribed by IFRS 9, which permits the use of lifetime expected loss provision for receivables. The expected credit losses on receivables are estimated using a provision matrix by reference to past default experience of the customers and an analysis of the customers' current financial positions, as well as the forward-looking indicators such as macroeconomic business indicator.

When there are evidences indicating that the counterparty is in evasion, bankruptcy, deregistration of its company or the accounts receivable are over two years past due and the recoverable amount cannot be reasonable estimated, the Company writes off the trade notes and accounts receivable. For accounts receivable that have been written off, the Company continues to engage in enforcement activity to attempt to recover the receivables due. Where recoveries are made, these are recognized in profit or loss.

Except for receivables arising from telecommunications business and project business, the Company's remaining accounts receivable are limited. Therefore, only Chunghwa's provision matrix arising from telecommunications business and project business is disclosed below.

### March 31, 2019

	Not Past Due	Past Due Less than 30 Days	Pass Due 31 to 60 Days	Pass Due 61 to 90 Days	Pass Due 91 to 120 Days	Pass Due 121 to 180 Days	Pass Due over 181 Days	Total
Telecommunications business								
Expected credit loss rate (Note a)	0%-3%	3%-29%	8%-70%	19%-83%	30%-90%	58%-96%	100%	
Gross carrying amount	\$ 22,471,713	\$ 484,292	\$ 121,606	\$ 57,219	\$ 130,153	\$ 29,607	\$ 439,878	\$ 23,734,468

(Continued)

	Not Past Due	Past Due Less than 30 Days	Pass Due 31 to 60 Days	Pass Due 61 to 90 Days	Pass Due 91 to 120 Days	Pass Due 121 to 180 Days	Pass Due over 181 Days	Total
Loss allowance (Lifetime ECL)	\$ (74,225)	\$ (30,867)	\$ (28,169)	\$ (25,686)	\$ (26,075)	\$ (26,339)	\$ (439,878)	\$ (651,239)
Amortized cost	\$ 22,397,488	\$ 453,425	\$ 93,437	\$ 31,533	\$ 104,078	\$ 3,268	\$ -	\$ 23,083,229
<b>Project business</b>								
Expected credit loss rate (Note b)	0%-5%	5%	10%	30%	50%	80%	100%	
Gross carrying amount	\$ 2,069,173	\$ 130,563	\$ 75,300	\$ 207,572	\$ 47,669	\$ 17,095	\$ 1,692,221	\$ 4,239,593
Loss allowance (Lifetime ECL)	(10,785)	(9,189)	(7,678)	(70,693)	(31,909)	(13,808)	(1,692,221)	(1,836,283)
Amortized cost	\$ 2,058,388	\$ 121,374	\$ 67,622	\$ 136,879	\$ 15,760	\$ 3,287	\$ -	\$ 2,403,310

(Concluded)

## December 31, 2018

	Not Past Due	Past Due Less than 30 Days	Pass Due 31 to 60 Days	Pass Due 61 to 90 Days	Pass Due 91 to 120 Days	Pass Due 121 to 180 Days	Pass Due over 181 Days	Total
<b>Telecommunications business</b>								
Expected credit loss rate (Note a)	0%-3%	3%-30%	7%-69%	19%-82%	32%-90%	61%-95%	100%	
Gross carrying amount	\$ 23,307,276	\$ 454,465	\$ 94,715	\$ 48,924	\$ 37,640	\$ 36,090	\$ 418,101	\$ 24,397,211
Loss allowance (lifetime ECL)	(79,857)	(26,872)	(24,023)	(28,432)	(28,196)	(25,618)	(418,101)	(631,099)
Amortized cost	\$ 23,227,419	\$ 427,593	\$ 70,692	\$ 20,492	\$ 9,444	\$ 10,472	\$ -	\$ 23,766,112
<b>Project business</b>								
Expected credit loss rate (Note b)	0%-5%	5%	10%	30%	50%	80%	100%	
Gross carrying amount	\$ 4,066,271	\$ 88,384	\$ 92,343	\$ 8,248	\$ 12,132	\$ 6,809	\$ 1,725,168	\$ 5,999,355
Loss allowance (lifetime ECL)	(152,624)	(8,609)	(10,142)	(2,910)	(8,492)	(5,643)	(1,725,168)	(1,913,588)
Amortized cost	\$ 3,913,647	\$ 79,775	\$ 82,201	\$ 5,338	\$ 3,640	\$ 1,166	\$ -	\$ 4,085,767

## March 31, 2018

	Not Past Due	Past Due Less than 30 Days	Pass Due 31 to 60 Days	Pass Due 61 to 90 Days	Pass Due 91 to 120 Days	Pass Due 121 to 180 Days	Pass Due over 181 Days	Total
<b>Telecommunications business</b>								
Expected credit loss rate (Note a)	0%-2%	3%-33%	9%-69%	15%-82%	28%-89%	64%-98%	100%	
Gross carrying amount	\$ 23,331,863	\$ 351,328	\$ 124,106	\$ 60,798	\$ 33,847	\$ 29,170	\$ 460,011	\$ 24,391,123
Loss allowance (Lifetime ECL)	(65,172)	(36,358)	(29,213)	(27,336)	(29,103)	(28,685)	(460,011)	(675,878)
Amortized cost	\$ 23,266,691	\$ 314,970	\$ 94,893	\$ 33,462	\$ 4,744	\$ 485	\$ -	\$ 23,715,245
<b>Project business</b>								
Expected credit loss rate (Note b)	0%-5%	5%	10%	30%	50%	80%	100%	
Gross carrying amount	\$ 3,775,399	\$ 290,847	\$ 730,900	\$ 127,247	\$ 61,190	\$ 58,425	\$ 1,372,868	\$ 6,416,876
Loss allowance (Lifetime ECL)	(100,272)	(45,175)	(107,207)	(19,891)	(9,749)	(8,645)	(1,372,868)	(1,663,807)
Amortized cost	\$ 3,675,127	\$ 245,672	\$ 623,693	\$ 107,356	\$ 51,441	\$ 49,780	\$ -	\$ 4,753,069

Note a: Please refer to Notes 28 and 41 for the information of disaggregation of telecommunications service revenue. The expected credit loss rate applicable to different business revenue varies so as to reflect the risk level indicating by factors like historical experience.

Note b: The project business has different loss types according to the customer types. The expected credit loss rate listed above is for general customers. When customer is the government or its affiliates, it is expected that no credit loss will occur. For those who had bounced or exchanged checks as well as those accounts receivable were overdue more than six months that are classified as high risk customers, the expected credit loss of high risk customers is at least 50%, and the rate is increased when the overdue days increases.

Movements of the allowance for doubtful accounts were as follows:

	<b>Three Months Ended March 31</b>	
	<b>2019</b>	<b>2018</b>
Balance on January 1, 2019	\$ 2,602,055	\$ 2,117,349
Add: Provision for (reversal of) credit loss	(2,227)	320,388
Less: Amounts written off	<u>(49,278)</u>	<u>(50,284)</u>
Balance on March 31, 2019	<u>\$ 2,550,550</u>	<u>\$ 2,387,453</u>

## 10. INVENTORIES

	<b>March 31, 2019</b>	<b>December 31, 2018</b>	<b>March 31, 2018</b>
Merchandise	\$ 3,607,408	\$ 6,067,750	\$ 4,616,215
Project in process	7,991,698	6,756,486	4,155,581
Work in process	108,766	109,191	138,637
Raw materials	<u>120,584</u>	<u>111,566</u>	<u>93,950</u>
	11,828,456	13,044,993	9,004,383
Land held under development	1,998,733	1,998,733	1,998,733
Construction in progress	<u>77,140</u>	<u>76,989</u>	<u>76,612</u>
	<u>\$ 13,904,329</u>	<u>\$ 15,120,715</u>	<u>\$ 11,079,728</u>

The operating costs related to inventories were \$12,163,408 thousand (including the valuation loss on inventories of \$95,682 thousand) and \$12,291,096 thousand (including the valuation loss on inventories of \$32,476 thousand) for the three months ended March 31, 2019 and 2018, respectively.

As of March 31, 2019, December 31, 2018 and March 31, 2018, inventories of \$2,075,873 thousand, \$2,075,722 thousand and \$2,075,345 thousand, respectively, were expected to be recovered after more than twelve months. The aforementioned amount of inventories is related to property development owned by LED.

Land held under development and construction in progress on March 31, 2019, December 31, 2018 and March 31, 2018 was for Qingshan Sec., Dayuan Dist., Taoyuan City project.

## 11. PREPAYMENTS

	<b>March 31, 2019</b>	<b>December 31, 2018</b>	<b>March 31, 2018</b>
Prepaid rents	\$ 3,629,909	\$ 2,415,083	\$ 2,802,370
Prepaid salary and bonus	3,105,568	5,407	3,147,147
Others	<u>1,050,937</u>	<u>2,915,831</u>	<u>2,997,512</u>
	<u>\$ 7,786,414</u>	<u>\$ 5,336,321</u>	<u>\$ 8,947,029</u>

(Continued)

	March 31, 2019	December 31, 2018	March 31, 2018
Current			
Prepaid salary and bonus	\$ 3,105,568	\$ 5,407	\$ 3,147,147
Prepaid rents	699,428	599,817	1,003,157
Others	<u>1,050,309</u>	<u>1,267,760</u>	<u>1,384,757</u>
	<u>\$ 4,855,305</u>	<u>\$ 1,872,984</u>	<u>\$ 5,535,061</u>
Noncurrent			
Prepaid rents	\$ 2,930,481	\$ 1,815,266	\$ 1,799,213
Others	<u>628</u>	<u>1,648,071</u>	<u>1,612,755</u>
	<u>\$ 2,931,109</u>	<u>\$ 3,463,337</u>	<u>\$ 3,411,968</u> (Concluded)

Prepaid rents in 2019 comprises the lease agreements applied the recognition exemption and the prepayments for leases that do not meet the definition of leases under IFRS 16.

## 12. OTHER CURRENT MONETARY ASSETS

	March 31, 2019	December 31, 2018	March 31, 2018
Time deposits and negotiable certificates of deposit with maturities of more than three months	\$ 5,789,466	\$ 8,156,647	\$ 4,223,295
Others	<u>1,379,781</u>	<u>1,347,556</u>	<u>1,170,833</u>
	<u>\$ 7,169,247</u>	<u>\$ 9,504,203</u>	<u>\$ 5,394,128</u>

The annual yield rates of time deposits and negotiable certificates of deposit with maturities of more than three months were as follows:

	March 31, 2019	December 31, 2018	March 31, 2018
Time deposits and negotiable certificates of deposit with maturities of more than three months	0.03%-2.95%	0.03%-3.05%	0.06%-4.30%

## 13. SUBSIDIARIES

- a. Information on significant noncontrolling interest subsidiary

Subsidiaries	Principal Place of Business	Proportion of Ownership Interests and Voting Rights Held by Noncontrolling Interests		
		March 31, 2019	December 31, 2018	March 31, 2018
SENAO	Taiwan	72%	72%	71%
CHPT	Taiwan	66%	66%	62%



	<b>Profit Allocated to Noncontrolling Interests</b>		<b>Accumulated Noncontrolling Interests</b>		
	<b>Three Months Ended March 31</b>		<b>March 31,</b>	<b>December 31,</b>	<b>March 31,</b>
	<b>2019</b>	<b>2018</b>	<b>2019</b>	<b>2018</b>	<b>2018</b>
SENAO	\$ 45,219	\$ 122,274	\$ 4,273,647	\$ 4,228,240	\$ 4,381,223
CHPT	\$ 61,937	\$ 102,781	4,106,192	4,044,322	3,658,493
Individually immaterial subsidiaries with noncontrolling interests			1,808,900	1,737,386	958,597
			<u>\$ 10,188,739</u>	<u>\$ 10,009,948</u>	<u>\$ 8,998,313</u>

Summarized financial information in respect of SENAO and its subsidiaries that has material noncontrolling interests is set out below. The summarized financial information below represents amounts before intercompany eliminations.

	<b>March 31, 2019</b>	<b>December 31, 2018</b>	<b>March 31, 2018</b>
Current assets	\$ 7,016,462	\$ 7,041,416	\$ 8,017,896
Noncurrent assets	3,527,483	2,675,748	2,695,786
Current liabilities	(3,950,067)	(3,740,162)	(4,474,560)
Noncurrent liabilities	<u>(719,587)</u>	<u>(164,056)</u>	<u>(155,673)</u>
Equity	<u>\$ 5,874,291</u>	<u>\$ 5,812,946</u>	<u>\$ 6,083,449</u>
Equity attributable to the parent	\$ 1,600,644	\$ 1,584,706	\$ 1,702,226
Equity attributable to noncontrolling interests	<u>4,273,647</u>	<u>4,228,240</u>	<u>4,381,223</u>
	<u>\$ 5,874,291</u>	<u>\$ 5,812,946</u>	<u>\$ 6,083,449</u>
		<b>Three Months Ended March 31</b>	
		<b>2019</b>	<b>2018</b>
Revenues and income		\$ 7,827,185	\$ 8,898,056
Costs and expenses		<u>7,763,979</u>	<u>8,723,388</u>
Profit for the period		<u>\$ 63,206</u>	<u>\$ 174,668</u>
Profit attributable to the parent		\$ 17,987	\$ 52,394
Profit attributable to the noncontrolling interests		<u>45,219</u>	<u>122,274</u>
Profit for the period		<u>\$ 63,206</u>	<u>\$ 174,668</u>
Other comprehensive income attributable to the parent		\$ 3,159	\$ 2,735
Other comprehensive income attributable to noncontrolling interests		<u>7,199</u>	<u>1,653</u>
Other comprehensive income for the period		<u>\$ 10,358</u>	<u>\$ 4,388</u>

(Continued)

	<b>Three Months Ended March 31</b>	
	<b>2019</b>	<b>2018</b>
Total comprehensive income attributable to the parent	\$ 21,146	\$ 55,129
Total comprehensive income attributable to noncontrolling interests	<u>52,418</u>	<u>123,927</u>
Total comprehensive income for the period	<u>\$ 73,564</u>	<u>\$ 179,056</u>
Net cash flow from operating activities	\$ 34,785	\$ 301,134
Net cash flow from investing activities	186,604	(67,870)
Net cash flow from financing activities	(86,449)	89
Effect of exchange rate changes on cash and cash equivalents	<u>63</u>	<u>(241)</u>
Net cash inflows	<u>\$ 135,003</u>	<u>\$ 233,112</u> (Concluded)

Summarized financial information in respect of CHPT and its subsidiaries that has material noncontrolling interests is set out below. The summarized financial information below represents amounts before intercompany eliminations.

	<b>March 31, 2019</b>	<b>December 31, 2018</b>	<b>March 31, 2018</b>
Current assets	\$ 4,277,957	\$ 4,416,910	\$ 4,465,717
Noncurrent assets	3,114,279	2,779,020	2,307,227
Current liabilities	(1,135,278)	(1,044,054)	(842,287)
Noncurrent liabilities	<u>(11,903)</u>	<u>(816)</u>	<u>(1,173)</u>
Equity	<u>\$ 6,245,055</u>	<u>\$ 6,151,060</u>	<u>\$ 5,929,484</u>
Equity attributable to CHI	\$ 2,138,863	\$ 2,106,738	\$ 2,270,991
Equity attributable to noncontrolling interests	<u>4,106,192</u>	<u>4,044,322</u>	<u>3,658,493</u>
	<u>\$ 6,245,055</u>	<u>\$ 6,151,060</u>	<u>\$ 5,929,484</u>

	<b>Three Months Ended March 31</b>	
	<b>2019</b>	<b>2018</b>
Revenues and income	\$ 611,749	\$ 744,990
Costs and expenses	<u>517,548</u>	<u>578,409</u>
Profit for the period	<u>\$ 94,201</u>	<u>\$ 166,581</u>
Profit attributable to CHI	\$ 32,264	\$ 63,800
Profit attributable to noncontrolling interests	<u>61,937</u>	<u>102,781</u>
Profit for the period	<u>\$ 94,201</u>	<u>\$ 166,581</u> (Continued)

	<b>Three Months Ended March 31</b>	
	<b>2019</b>	<b>2018</b>
Other comprehensive income attributable to CHI	\$ 338	\$ 92
Other comprehensive income attributable to noncontrolling interests	<u>649</u>	<u>148</u>
	<u>\$ 987</u>	<u>\$ 240</u>
Total comprehensive income attributable to the CHI	\$ 32,602	\$ 63,892
Total comprehensive income attributable to noncontrolling interests	<u>62,586</u>	<u>102,929</u>
	<u>\$ 95,188</u>	<u>\$ 166,821</u>
Net cash flow from operating activities	\$ 205,270	\$ 193,765
Net cash flow from investing activities	(235,104)	(238,677)
Net cash flow from financing activities	(5,364)	-
Effect of exchange rate changes on cash and cash equivalents	<u>714</u>	<u>524</u>
Net cash outflows	<u>\$ (34,484)</u>	<u>\$ (44,388)</u>

(Concluded)

b. Equity transactions with noncontrolling interests

CHIEF issued new shares in March 31, 2019 and 2018 as its employees exercised their options. Therefore, the Company's equity ownership interest in CHIEF decreased. See Note 32(b) for details.

The above transactions were accounted for as equity transactions since the Company did not cease to have control over these subsidiaries.

Information of the Company's equity transactions with noncontrolling interests for the three months ended March 31, 2019 and 2018 were as follows:

	<b>CHIEF Share-Based Payment</b>	
	<b>Three Months Ended March 31</b>	
	<b>2019</b>	<b>2018</b>
Cash consideration received from noncontrolling interests	\$ 14,328	\$ 33,299
The proportionate share of the carrying amount of the net assets of the subsidiary transferred to noncontrolling interests	<u>(15,140)</u>	<u>(21,180)</u>
Differences arising from equity transactions	<u>\$ (812)</u>	<u>\$ 12,119</u>
<u>Line items for equity transaction adjustments</u>		
Additional paid-in capital - arising from changes in equities of subsidiaries	<u>\$ (812)</u>	<u>\$ 12,119</u>

#### 14. INVESTMENTS ACCOUNTED FOR USING EQUITY METHOD

	March 31, 2019	December 31, 2018	March 31, 2018
Investments in associates	\$ <u>3,024,908</u>	\$ <u>2,944,890</u>	\$ <u>2,603,503</u>

a. Investments in associates

Investments in associates were as follows:

	Carrying Amount		
	March 31, 2019	December 31, 2018	March 31, 2018
<u>Listed</u>			
Senao Networks, Inc. (“SNI”)	\$ 944,463	\$ 919,841	\$ 902,901
<u>Non-listed</u>			
ST-2 Satellite Ventures Pte., Ltd. (“STS”)	522,084	496,033	500,546
International Integrated System, Inc. (“IISI”)	307,978	310,842	303,712
Viettel-CHT Co., Ltd. (“Viettel-CHT”)	302,794	286,510	256,476
Taiwan International Standard Electronics Co., Ltd. (“TISE”)	234,238	216,439	149,019
Chunghwa PChome Fund I Co., Ltd. (“CPFI”)	197,740	198,974	-
KKBOX Taiwan Co., Ltd. (“KKBOXTW”, previously known as Skysoft Co., Ltd.)	139,951	147,360	138,534
KingwayTek Technology Co., Ltd. (“KWT”)	135,690	134,925	125,949
So-net Entertainment Taiwan Limited (“So-net”)	127,980	119,956	102,602
Taiwan International Ports Logistics Corporation (“TIPL”)	49,887	49,650	48,209
Click Force Co., Ltd. (“CF”)	37,835	37,876	38,075
UUPON Inc. (“UUPON”, previously known as Dian Zuan Integrating Marketing Co., Ltd.)	14,238	16,647	22,428
Alliance Digital Tech Co., Ltd. (“ADT”)	5,080	5,080	11,787
Cornerstone Ventures Co., Ltd. (“CVC”)	4,950	4,757	-
HopeTech Technologies Limited (“HopeTech”)	-	-	3,265
MeWorks LIMITED (HK) (“MeWorks”)	-	-	-
	<u>\$ 3,024,908</u>	<u>\$ 2,944,890</u>	<u>\$ 2,603,503</u>

The percentages of ownership and voting rights in associates held by the Company as of balance sheet dates were as follows:

	<b>% of Ownership and Voting Rights</b>		
	<b>March 31, 2019</b>	<b>December 31, 2018</b>	<b>March 31, 2018</b>
Senao Networks, Inc. (“SNI”)	34	34	34
ST-2 Satellite Ventures Pte., Ltd. (“STS”)	38	38	38
International Integrated System, Inc. (“IISI”)	32	32	32
Viettel-CHT Co., Ltd. (“Viettel-CHT”)	30	30	30
Taiwan International Standard Electronics Co., Ltd. (“TISE”)	40	40	40
Chunghwa PChome Fund I Co., Ltd. (“CPFI”)	50	50	-
KKBOX Taiwan Co., Ltd. (“KKBOXTW”)	30	30	30
KingwayTek Technology Co., Ltd. (“KWT”)	26	26	26
So-net Entertainment Taiwan Limited (“So-net”)	30	30	30
Taiwan International Ports Logistics Corporation (“TIPL”)	27	27	27
Click Force Co., Ltd. (“CF”)	49	49	49
UUpon Inc. (“UUPON”)	22	22	22
Alliance Digital Tech Co., Ltd. (“ADT”)	14	14	14
Cornerstone Ventures Co., Ltd. (“CVC”)	49	49	-
HopeTech Technologies Limited (“HopeTech”)	-	-	45
MeWorks LIMITED (HK) (“MeWorks”)	20	20	20

None of the above associates is considered individually material to the Company. Summarized financial information of associates that are not individually material was as follows:

	<b>Three Months Ended March 31</b>	
	<b>2019</b>	<b>2018</b>
The Company’s share of profits	\$ 79,173	\$ 82,648
The Company’s share of other comprehensive income	<u>170</u>	<u>835</u>
The Company’s share of total comprehensive income	<u>\$ 79,343</u>	<u>\$ 83,483</u>

The Level 1 fair values based on the closing market prices of SNI as of the balance sheet dates were as follows:

	<b>December 31,</b>		
	<b>March 31, 2019</b>	<b>2018</b>	<b>March 31, 2018</b>
SNI	<u>\$ 1,765,667</u>	<u>\$ 1,447,350</u>	<u>\$ 2,263,038</u>

The Company invested 50% equity shares of Chunghwa PChome Fund I Co., Ltd. (“CPFI”) in October 2018. The Company has only two out of five seats of the Board of Directors of CPFI, and has no control but significant influence over CPFI. Therefore, the Company recognized CPFI as investment in associate. CPFI engages mainly in investment business.

The Company invested 49% equity shares of Cornerstone Ventures Co., Ltd. (“CVC”) in October 2018. The Company has only two out of five seats of the Board of Directors of CVC, and has no control but significant influence over CVC. Therefore, the Company recognized CVC as investment in associate. CVC engages mainly in investment business.

HopeTech returned the proceeds of \$19,184 thousand as a result of capital reduction in January 2018. The Company disposed all shares of HopeTech in June 2018.

The Company owns 14% equity shares of ADT. As the Company remains the seat in the Board of Directors of ADT and considers the relative size of ownership interest and the dispersion of shares owned by the other stockholders, the Company remains significant influence over ADT. In June 2018, the stockholders of ADT approved to dissolve. The liquidation of ADT is still in process.

The Company’s share of profit and other comprehensive income of associates was recognized based on the reviewed financial statements.

## 15. PROPERTY, PLANT AND EQUIPMENT

**March 31, 2019**

Assets used by the Company	\$ 278,763,541
Assets subject to operating leases	<u>5,917,598</u>
	<u>\$ 284,681,139</u>

### a. Assets used by the Company - 2019

	Land	Land Improvements	Buildings	Computer Equipment	Telecommunications Equipment	Transportation Equipment	Miscellaneous Equipment	Construction in Progress and Equipment to be Accepted	Total
<i>Cost</i>									
Balance on January 1, 2019	\$ 103,972,052	\$ 1,600,323	\$ 72,911,010	\$ 14,258,485	\$ 715,748,118	\$ 3,882,534	\$ 9,873,589	\$ 18,644,766	\$ 940,890,877
Effect of retrospective application of IFRS 16	(3,617,627)	(689)	(3,582,774)	-	(3,884,421)	-	-	-	(11,085,511)
Balance on January 1, 2019 as adjusted	100,354,425	1,599,634	69,328,236	14,258,485	711,863,697	3,882,534	9,873,589	18,644,766	929,805,366
Additions	-	-	2,297	11,941	14,678	-	12,126	3,754,329	3,795,371
Disposal	(9,310)	-	(2,285)	(292,201)	(13,396,265)	(7,522)	(75,245)	-	(13,782,828)
Effect of foreign exchange differences	-	-	-	154	2,647	3	1,226	16	4,046
Others	88	-	(1,676)	16,133	5,861,350	4,444	36,813	(5,912,730)	4,422
Balance on March 31, 2019	<u>\$ 100,345,203</u>	<u>\$ 1,599,634</u>	<u>\$ 69,326,572</u>	<u>\$ 13,994,512</u>	<u>\$ 704,346,107</u>	<u>\$ 3,879,459</u>	<u>\$ 9,848,509</u>	<u>\$ 16,486,381</u>	<u>\$ 919,826,377</u>
<i>Accumulated depreciation and impairment</i>									
Balance on January 1, 2019	\$ -	\$ (1,337,704)	\$ (28,126,983)	\$ (12,143,307)	\$ (599,425,774)	\$ (3,651,139)	\$ (7,291,742)	\$ -	\$ (651,976,649)
Effect of retrospective application of IFRS 16	-	512	1,265,356	-	2,575,431	-	-	-	3,841,299
Balance on January 1, 2019 as adjusted	-	(1,337,192)	(26,861,627)	(12,143,307)	(596,850,343)	(3,651,139)	(7,291,742)	-	(648,135,350)
Depreciation expenses	-	(10,762)	(324,803)	(212,324)	(5,946,959)	(26,372)	(171,444)	-	(6,692,664)
Disposal	-	-	2,285	291,500	13,392,872	7,522	74,526	-	13,768,705
Effect of foreign exchange differences	-	-	-	(94)	(884)	(3)	(580)	-	(1,561)
Others	-	-	6,133	(6,716)	1,374	(938)	(1,819)	-	(1,966)
Balance on March 31, 2019	<u>\$ -</u>	<u>\$ (1,347,954)</u>	<u>\$ (27,178,012)</u>	<u>\$ (12,070,941)</u>	<u>\$ (589,403,940)</u>	<u>\$ (3,670,930)</u>	<u>\$ (7,391,059)</u>	<u>\$ -</u>	<u>\$ (641,062,836)</u>
Balance on January 1, 2019, net	<u>\$ 103,972,052</u>	<u>\$ 262,619</u>	<u>\$ 44,784,027</u>	<u>\$ 2,115,178</u>	<u>\$ 116,322,344</u>	<u>\$ 231,395</u>	<u>\$ 2,581,847</u>	<u>\$ 18,644,766</u>	<u>\$ 288,914,228</u>
Balance on January 1, 2019 as adjusted	<u>\$ 100,354,425</u>	<u>\$ 262,442</u>	<u>\$ 42,466,609</u>	<u>\$ 2,115,178</u>	<u>\$ 115,013,354</u>	<u>\$ 231,395</u>	<u>\$ 2,581,847</u>	<u>\$ 18,644,766</u>	<u>\$ 281,670,016</u>
Balance on March 31, 2019, net	<u>\$ 100,345,203</u>	<u>\$ 251,680</u>	<u>\$ 42,148,560</u>	<u>\$ 1,923,571</u>	<u>\$ 114,942,167</u>	<u>\$ 208,529</u>	<u>\$ 2,457,450</u>	<u>\$ 16,486,381</u>	<u>\$ 278,763,541</u>

There was no indication that property, plant and equipment was impaired so the Company did not recognize any impairment loss for the three months ended March 31, 2019.

Depreciation expense for assets used by the Company is computed using the straight-line method over the following estimated service lives:

Land improvements	8-30 years
Buildings	
Main buildings	35-60 years
Other building facilities	3-20 years
Computer equipment	2-8 years
Telecommunications equipment	
Telecommunication circuits	2-30 years
Telecommunication machinery and antennas equipment	2-30 years
Transportation equipment	3-10 years
Miscellaneous equipment	
Leasehold improvements	1-9 years
Mechanical and air conditioner equipment	3-16 years
Others	1-10 years

b. Assets subject to operating leases - 2019

	<b>Land</b>	<b>Land Improvements</b>	<b>Buildings</b>	<b>Total</b>
<u>Cost</u>				
Balance on January 1, 2019	\$ -	\$ -	\$ -	\$ -
Effect of retrospective application of IFRS 16	<u>3,617,627</u>	<u>689</u>	<u>3,582,774</u>	<u>7,201,090</u>
Balance on January 1, 2019 as adjusted	3,617,627	689	3,582,774	7,201,090
Additions	-	-	310	310
Transferred to assets used by the company	<u>(88)</u>	<u>-</u>	<u>(2,341)</u>	<u>(2,429)</u>
Balance on March 31, 2019	<u>\$ 3,617,539</u>	<u>\$ 689</u>	<u>\$ 3,580,743</u>	<u>\$ 7,198,971</u>
<u>Accumulated depreciation and impairment</u>				
Balance on January 1, 2019	\$ -	\$ -	\$ -	\$ -
Effect of retrospective application of IFRS 16	<u>-</u>	<u>(512)</u>	<u>(1,265,356)</u>	<u>(1,265,868)</u>
Balance on January 1, 2019 as adjusted	-	(512)	(1,265,356)	(1,265,868)
Depreciation expenses	-	(16)	(16,014)	(16,030)
Transferred to assets used by the company	<u>-</u>	<u>-</u>	<u>525</u>	<u>525</u>
Balance on March 31, 2019	<u>\$ -</u>	<u>\$ (528)</u>	<u>\$ (1,280,845)</u>	<u>\$ (1,281,373)</u>
Balance on January 1, 2019 as adjusted, net	<u>\$ 3,617,627</u>	<u>\$ 177</u>	<u>\$ 2,317,418</u>	<u>\$ 5,935,222</u>
Balance on March 31, 2019, net	<u>\$ 3,617,539</u>	<u>\$ 161</u>	<u>\$ 2,299,898</u>	<u>\$ 5,917,598</u>

The Company leases out land and buildings with lease terms between 1 to 20 years. The lessees do not have bargain purchase options to acquire the assets at the expiry of the lease periods.

The future aggregate lease collection under operating lease for the freehold plant, property and equipment is as follows:

	<b>March 31, 2019</b>
Year 1	\$245,048
Year 2	142,144
Year 3	91,914
Year 4	59,084
Year 5	37,657
Onwards	<u>94,223</u>
	<u><b>\$670,070</b></u>

The above items of property, plant and equipment subject to operating leases are depreciated on a straight-line basis over their estimated useful lives as follows:

Land improvements	10 years
Buildings	
Main buildings	35-60 years
Other building facilities	3-15 years

c. Property, plant and equipment - 2018

	Land	Land Improvements	Buildings	Computer Equipment	Telecommunications Equipment	Transportation Equipment	Miscellaneous Equipment	Construction in Progress and Equipment to be Accepted	Total
<u>Cost</u>									
Balance on January 1, 2018	\$ 104,079,190	\$ 1,594,899	\$ 72,694,050	\$ 14,161,797	\$ 722,054,435	\$ 3,834,372	\$ 9,514,875	\$ 18,526,814	\$ 946,460,432
Additions	-	-	2,248	7,752	7,236	-	30,023	3,171,774	3,219,033
Disposal	(9,759)	-	(23)	(123,117)	(10,400,269)	(10,922)	(164,204)	-	(10,708,294)
Effect of foreign exchange differences	-	-	-	6	(50,032)	10	635	112	(49,269)
Others	10,348	-	(5,344)	13,197	7,724,079	2,048	49,084	(7,782,519)	10,893
Balance on March 31, 2018	<u>\$ 104,079,779</u>	<u>\$ 1,594,899</u>	<u>\$ 72,690,931</u>	<u>\$ 14,059,635</u>	<u>\$ 719,335,449</u>	<u>\$ 3,825,508</u>	<u>\$ 9,430,413</u>	<u>\$ 13,916,181</u>	<u>\$ 938,932,795</u>
<u>Accumulated depreciation and impairment</u>									
Balance on January 1, 2018	\$ -	\$ (1,292,527)	\$ (26,798,694)	\$ (11,787,847)	\$(607,154,914)	\$ (3,513,529)	\$ (7,205,011)	\$ -	\$(657,752,522)
Depreciation expenses	-	(11,841)	(338,264)	(265,910)	(6,060,756)	(50,403)	(163,057)	-	(6,890,231)
Disposal	-	-	23	118,523	10,385,474	10,898	162,872	-	10,677,790
Effect of foreign exchange differences	-	-	-	27	15,177	13	(196)	-	15,021
Others	-	(10)	2,568	(2,278)	1,321	(1,544)	(5,791)	-	(5,734)
Balance on March 31, 2018	<u>\$ -</u>	<u>\$ (1,304,378)</u>	<u>\$ (27,134,367)</u>	<u>\$ (11,937,485)</u>	<u>\$(602,813,698)</u>	<u>\$ (3,554,565)</u>	<u>\$ (7,211,183)</u>	<u>\$ -</u>	<u>\$(653,955,676)</u>
Balance on January 1, 2018, net	<u>\$ 104,079,190</u>	<u>\$ 302,372</u>	<u>\$ 45,895,356</u>	<u>\$ 2,373,950</u>	<u>\$ 114,899,521</u>	<u>\$ 320,843</u>	<u>\$ 2,309,864</u>	<u>\$ 18,526,814</u>	<u>\$ 288,707,910</u>
Balance on March 31, 2018, net	<u>\$ 104,079,779</u>	<u>\$ 290,521</u>	<u>\$ 45,556,564</u>	<u>\$ 2,192,150</u>	<u>\$ 116,521,751</u>	<u>\$ 270,943</u>	<u>\$ 2,219,230</u>	<u>\$ 13,916,181</u>	<u>\$ 284,977,119</u>

There was no indication that property, plant and equipment was impaired so the Company did not recognize any impairment loss for the three months ended March 31, 2018.

Depreciation expense is computed using the straight-line method over the following estimated service lives:

Land improvements	8-30 years
Buildings	
Main buildings	35-60 years
Other building facilities	3-20 years
Computer equipment	2-8 years
Telecommunications equipment	
Telecommunication circuits	2-30 years
Telecommunication machinery and antennas equipment	2-30 years
Transportation equipment	3-10 years

(Continued)



Miscellaneous equipment	
Leasehold improvements	1-6 years
Mechanical and air conditioner equipment	3-16 years
Others	1-10 years
	(Concluded)

## 16. LEASE ARRANGEMENTS

### a. Right-of-use Assets - 2019

	<b>March 31, 2019</b>
Land and buildings	
Handsets base stations	\$ 6,846,186
Others	1,959,142
Equipment	<u>2,904,751</u>
	<u>\$ 11,710,079</u>
	<b>Three Months Ended March 31, 2019</b>
Additions to right-of-use assets	<u>\$ 799,527</u>
Depreciation charge for right-of-use assets	
Land and buildings	
Handsets base stations	\$ 666,476
Others	203,795
Equipment	<u>104,676</u>
	<u>\$ 974,947</u>

### b. Lease liabilities - 2019

	<b>March 31, 2019</b>
Lease liabilities	
Current	\$ 3,500,021
Non-current	<u>6,353,362</u>
	<u>\$ 9,853,383</u>

Range of discount rate for lease liabilities is as follows:

	<b>March 31, 2019</b>
Land and buildings	
Handsets base stations	0.59%-1.18%
Others	0.59%-9.00%
Equipment	0.59%-4.50%

c. Important lease-in activities and terms

The Company mainly enters into lease-in agreements of land and buildings for handsets base stations located all over Taiwan with lease terms from 1 to 20 years. There's no clause for bargain purchase options to acquire the assets at the expiry of the lease periods in the agreement. In most lease-in agreements of handsets base station agreements, the Company is able to terminate the agreement prior to the maturity date provided that the premise the Company fails to meet the propose to build telecommunication equipment due to legal restriction, controversial events, or other events.

The Company also leases land and buildings for the use of offices, server rooms, and stores with lease terms from 1 to 30 years. Most of the lease agreements for national land adjust the lease payment according to the changes of present values of land announced by the authority. At the expiry of the lease term, the Company does not have bargain purchase options to acquire the assets.

The lease agreements for equipment include a contract between Chunghwa and ST-2 Satellite Ventures Pte., Ltd. on March 12, 2010 to lease capacity on the ST-2 satellite. The information of lease agreements with related parties, please refer to Note 36 to the consolidated financial statements for details.

d. Other lease information

2019

	<b>Three Months Ended March 31, 2019</b>
Expenses relating to low-value asset leases	\$ <u>1,481</u>
Expenses relating to variable lease payments not included in the measurement of lease liabilities	\$ <u>1,131</u>
Total cash outflow for leases	\$ <u>1,041,865</u>

The Company leases certain equipment which qualify as low-value asset leases. The Company has elected to apply the recognition exemption and, thus, not to recognize right-of-use assets and lease liabilities for these leases.

Lease-out arrangements under operating leases for freehold property, plant, and equipment and investment properties and are set out in Notes 15 and 17 to the consolidated financial statements.

2018

The future aggregate minimum lease payments under non-cancellable operating leases are as follows:

	<b>December 31, 2018</b>	<b>March 31, 2018</b>
Within one year	\$ 3,439,259	\$ 3,396,608
Longer than one year but within five years	6,375,101	6,648,203
Longer than five years	<u>743,494</u>	<u>738,293</u>
	<u>\$ 10,557,854</u>	<u>\$ 10,783,104</u>

## 17. INVESTMENT PROPERTIES

### Cost

Balance on January 1, 2018	\$ 9,134,817
Additions	<u>5,557</u>

Balance on March 31, 2018	<u>\$ 9,140,374</u>
---------------------------	---------------------

### Accumulated depreciation and impairment

Balance on January 1, 2018	\$ (1,087,024)
Depreciation expense	<u>(5,196)</u>

Balance on March 31, 2018	<u>\$ (1,092,220)</u>
---------------------------	-----------------------

Balance on January 1, 2018, net	<u>\$ 8,047,793</u>
Balance on March 31, 2018, net	<u>\$ 8,048,154</u>

### Cost

Balance on January 1, 2019	\$ 9,392,452
Disposal	<u>(5,831)</u>

Balance on March 31, 2019	<u>\$ 9,386,621</u>
---------------------------	---------------------

### Accumulated depreciation and impairment

Balance on January 1, 2019	\$ (1,105,240)
Depreciation expense	(9,728)
Disposal	<u>5,831</u>

Balance on March 31, 2019	<u>\$ (1,109,137)</u>
---------------------------	-----------------------

Balance on January 1, 2019, net	<u>\$ 8,287,212</u>
Balance on March 31, 2019, net	<u>\$ 8,277,484</u>

Depreciation expense is computed using the straight-line method over the following estimated service lives:

Land improvements	8-30 years
Buildings	
Main buildings	35-60 years
Other building facilities	4-10 years

The fair values of the Company's investment properties as of December 31, 2018 and 2017 were determined by Level 3 fair value measurements inputs based on the appraisal reports conducted by independent appraisers. The Company used the aforementioned appraisal reports as the basis to determine the fair values as of March 31, 2019 and 2018 because there was no material change in the economic environment and the market transaction price. Those appraisal reports are based on the comparison approach, income approach or cost approach. Key assumptions and the fair values were as follows:

	<b>March 31, 2019</b>	<b>December 31, 2018</b>	<b>March 31, 2018</b>
Fair value	<u>\$ 18,514,801</u>	<u>\$ 18,514,801</u>	<u>\$ 17,728,012</u>
Overall capital interest rate	1.02%-4.04%	1.02%-4.04%	1.46%-2.20%
Profit margin ratio	12%-20%	12%-20%	12%-20%
Discount rate	-	-	1.04%
Capitalization rate	0.79%-1.75%	0.79%-1.75%	0.47%-1.69%

All of the Company's investment properties are held under freehold interest.

### 2019

The future aggregate lease collection under operating lease for investment properties is as follows:

	<b>March 31, 2019</b>
Year 1	\$ 114,977
Year 2	99,711
Year 3	80,987
Year 4	61,713
Year 5	52,534
Onwards	<u>105,165</u>
	<u>\$ 515,087</u>

### 2018

The future aggregate minimum lease collection under non-cancellable operating leases is as follows:

	<b>December 31, 2018</b>	<b>March 31, 2018</b>
Within one year	\$ 343,981	\$ 403,712
Longer than one year but within five years	580,451	645,334
Longer than five years	<u>205,747</u>	<u>228,893</u>
	<u>\$ 1,130,179</u>	<u>\$ 1,277,939</u>

## 18. INTANGIBLE ASSETS

	<b>3G and 4G Concession</b>	<b>Computer Software</b>	<b>Goodwill</b>	<b>Others</b>	<b>Total</b>
<u>Cost</u>					
Balance on January 1, 2018	\$ 70,144,000	\$ 3,311,610	\$ 236,200	\$ 418,150	\$ 74,109,960
Additions-acquired separately	-	69,096	-	827	69,923
Disposal	-	(63,664)	-	(58,009)	(121,673)
Effect of foreign exchange difference	<u>-</u>	<u>44</u>	<u>-</u>	<u>41</u>	<u>85</u>
Balance on March 31, 2018	<u>\$ 70,144,000</u>	<u>\$ 3,317,086</u>	<u>\$ 236,200</u>	<u>\$ 361,009</u>	<u>\$ 74,058,295</u>

(Continued)

	<b>3G and 4G Concession</b>	<b>Computer Software</b>	<b>Goodwill</b>	<b>Others</b>	<b>Total</b>
<u>Accumulated amortization and impairment</u>					
Balance on January 1, 2018	\$(16,674,565)	\$ (2,431,797)	\$ (26,677)	\$ (93,653)	\$(19,226,692)
Amortization expenses	(957,963)	(105,930)	-	(6,090)	(1,069,983)
Disposal	-	63,664	-	58,009	121,673
Impairment losses	-	-	-	(50,750)	(50,750)
Effect of foreign exchange difference	-	(32)	-	(6)	(38)
Balance on March 31, 2018	<u>\$(17,632,528)</u>	<u>\$ (2,474,095)</u>	<u>\$ (26,677)</u>	<u>\$ (92,490)</u>	<u>\$(20,225,790)</u>
Balance on January 1, 2018, net	<u>\$ 53,469,435</u>	<u>\$ 879,813</u>	<u>\$ 209,523</u>	<u>\$ 324,497</u>	<u>\$ 54,883,268</u>
Balance on March 31, 2018, net	<u>\$ 52,511,472</u>	<u>\$ 842,991</u>	<u>\$ 209,523</u>	<u>\$ 268,519</u>	<u>\$ 53,832,505</u>
<u>Cost</u>					
Balance on January 1, 2019	\$ 70,144,000	\$ 3,425,969	\$ 236,200	\$ 373,203	\$ 74,179,372
Additions-acquired separately	-	53,377	-	955	54,332
Disposal	(10,179,000)	(37,324)	-	-	(10,216,324)
Effect of foreign exchange difference	-	48	-	90	138
Others	-	247	-	-	247
Balance on March 31, 2019	<u>\$ 59,965,000</u>	<u>\$ 3,442,317</u>	<u>\$ 236,200</u>	<u>\$ 374,248</u>	<u>\$ 64,017,765</u>
<u>Accumulated amortization and impairment</u>					
Balance on January 1, 2019	\$(20,632,474)	\$ (2,467,170)	\$ (26,677)	\$ (109,369)	\$(23,235,690)
Amortization expenses	(959,893)	(98,218)	-	(6,083)	(1,064,194)
Disposal	10,179,000	37,324	-	-	10,216,324
Effect of foreign exchange difference	-	(32)	-	(21)	(53)
Balance on March 31, 2019	<u>\$(11,413,367)</u>	<u>\$ (2,528,096)</u>	<u>\$ (26,677)</u>	<u>\$ (115,473)</u>	<u>\$(14,083,613)</u>
Balance on January 1, 2019, net	<u>\$ 49,511,526</u>	<u>\$ 958,799</u>	<u>\$ 209,523</u>	<u>\$ 263,834</u>	<u>\$ 50,943,682</u>
Balance on March 31, 2019, net	<u>\$ 48,551,633</u>	<u>\$ 914,221</u>	<u>\$ 209,523</u>	<u>\$ 258,775</u>	<u>\$ 49,934,152</u>

(Concluded)

The concessions are granted and issued by the NCC. The concession fees are amortized using the straight-line method from the date operations commence through the date the license expires. The carrying amount of 3G concession fee was fully amortized by December 2018, and 4G concession fees will be fully amortized by December 2030 and December 2033.

The computer software is amortized using the straight-line method over the estimated useful lives of 1 to 10 years. Other intangible assets are amortized using the straight-line method over the estimated useful lives of 3 to 20 years. Goodwill is not amortized.

SENAO evaluated and determined that the recoverable amount of certain licensed contract was nil and recognized the impairment loss of \$50,750 thousand for the three months ended March 31, 2018. The recoverable amount was based on the value in use. The aforementioned impairment loss was included in other income and expenses of statement of comprehensive income.

## 19. OTHER ASSETS

	March 31, 2019	December 31, 2018	March 31, 2018
Spare parts	\$ 2,656,342	\$ 2,422,060	\$ 2,045,003
Refundable deposits	1,854,102	1,992,206	1,743,262
Other financial assets	1,000,000	1,000,000	1,000,000
Prepayment for investments	838,000	-	-
Others	<u>2,375,517</u>	<u>2,342,040</u>	<u>2,891,522</u>
	<u>\$ 8,723,961</u>	<u>\$ 7,756,306</u>	<u>\$ 7,679,787</u>
Current			
Spare parts	\$ 2,656,342	\$ 2,422,060	\$ 2,045,003
Others	<u>269,507</u>	<u>154,024</u>	<u>200,626</u>
	<u>\$ 2,925,849</u>	<u>\$ 2,576,084</u>	<u>\$ 2,245,629</u>
Noncurrent			
Refundable deposits	\$ 1,854,102	\$ 1,992,206	\$ 1,743,262
Other financial assets	1,000,000	1,000,000	1,000,000
Prepayment for investments	838,000	-	-
Others	<u>2,106,010</u>	<u>2,188,016</u>	<u>2,690,896</u>
	<u>\$ 5,798,112</u>	<u>\$ 5,180,222</u>	<u>\$ 5,434,158</u>

The participation of establishing Next Commercial Bank Co., Ltd. (“NCB”) was approved by Chunghwa’s Board of Directors in January 2019. The Company expects to invest \$4,500,000 thousand at most in NCB’s common stock and the Company’s equity ownership interest in NCB will be no more than 45%. The establishment of NCB is subject to the approval of FSC. Chunghwa prepaid \$838,000 thousand for the first phase of investment as of March 31, 2019.

Other financial assets - noncurrent was Piping Fund. As part of the government’s effort to upgrade the existing telecommunications infrastructure, Chunghwa and other public utility companies were required by the ROC government to contribute to a Piping Fund administered by the Taipei City Government. This fund was used to finance various telecommunications infrastructure projects. Net assets of this fund will be returned proportionately after the project is completed.

## 20. HEDGING DERIVATIVE FINANCIAL INSTRUMENTS

Chunghwa’s hedge strategy is to enter forward exchange contracts - buy to avoid its foreign currency exposure to certain foreign currency denominated equipment payments in the following six months. In addition, Chunghwa’s management considers the market condition to determine the hedge ratio and enters into forward exchange contracts with the banks to avoid the foreign currency risk.

Chunghwa signed equipment purchase contracts with suppliers and entered into forward exchange contracts to avoid foreign currency risk exposure to Euro-denominated purchase commitments. Those forward exchange contracts were designated as cash flow hedges. When forecast purchases actually take place, basis adjustments are made to the initial carrying amounts of hedged items.

For the hedges of highly probable forecast sales and purchases, as the critical terms (i.e. the notional amount, life and underlying) of the forward foreign exchange contracts and their corresponding hedged items are the same, the Company performs a qualitative assessment of effectiveness and it is expected that the value of the forward contracts and the value of the corresponding hedged items will systematically change in opposite direction in response to movements in the underlying exchange rates.

The main source of hedge ineffectiveness in these hedging relationships is the effect of credit risks of the Company and the counterparty on the fair value of the forward exchange contracts. Such credit risks do not impact the fair value of the hedged item attributable to changes in foreign exchange rates. No other sources of ineffectiveness emerged from these hedging relationships.

The following tables summarized the information relating to the hedges for foreign currency risk.

March 31, 2019

Hedging Instruments	Currency	Notional Amount (In Thousands)	Maturity	Forward Rate	Line Item in Balance Sheet	Carrying Amount		Change in Fair Values of Hedging Instruments Used for Calculating Hedge Ineffectiveness
						Asset	Liability	
Cash flow hedge Forecast purchases - forward exchange contracts	EUR/NT\$	EUR 7,206/ NT\$ 252,668	2019.06	\$ 35.07	Hedging financial assets (liabilities)	\$ -	\$ 2,719	\$ (3,788)
						<b>Accumulated Gain or Loss on Hedging Instruments in Other Equity</b>		
						<b>Change in Value of Hedged Item Used for Calculating Hedge Ineffectiveness</b>		
						<b>Continuing Hedges</b>		<b>Hedge Accounting no Longer Applied</b>
<b>Hedged Items</b>								
Cash flow hedge Forecast equipment purchases						\$ 3,788	\$ (2,719)	\$ -

December 31, 2018

Hedging Instruments	Currency	Notional Amount (In Thousands)	Maturity	Forward Rate	Line Item in Balance Sheet	Carrying Amount		Change in Fair Values of Hedging Instruments Used for Calculating Hedge Ineffectiveness
						Asset	Liability	
Cash flow hedge Forecast purchases - forward exchange contracts	EUR/NT\$	EUR 4,911/ NT\$ 171,797	2019.03	\$ 34.98	Hedging financial assets (liabilities)	\$ 1,069	\$ -	\$ 1,919
						<b>Accumulated Gain or Loss on Hedging Instruments in Other Equity</b>		
						<b>Change in Value of Hedged Item Used for Calculating Hedge Ineffectiveness</b>		
						<b>Continuing Hedges</b>		<b>Hedge Accounting no Longer Applied</b>
<b>Hedged Items</b>								
Cash flow hedge Forecast equipment purchases						\$ (1,919)	\$ 1,069	\$ -

March 31, 2018

Hedging Instruments	Currency	Notional Amount (In Thousands)	Maturity	Forward Rate	Line Item in Balance Sheet	Carrying Amount		Change in Fair Values of Hedging Instruments Used for Calculating Hedge Ineffectiveness
						Asset	Liability	
Cash flow hedge								
Forecast purchases - forward exchange contracts	EUR/NT\$	EUR1,248/ NT\$44,723	2018.06-09	\$ 35.84	Hedging financial assets (liabilities)	\$ 47	\$ -	\$ 897

Hedged Items	Change in Value of Hedged Item Used for Calculating Hedge Ineffectiveness	Accumulated Gain or Loss on Hedging Instruments in Other Equity	
		Continuing Hedges	Hedge Accounting no Longer Applied
Cash flow hedge			
Forecast equipment purchases	\$ (897)	\$ 47	\$ -

Three months ended March 31,2019

Hedge Transaction	Comprehensive Income				
	Hedging Losses Recognized in OCI	Amount of Hedge Ineffectiveness Recognized in Profit or Loss	Line Item in Which Hedge Ineffectiveness is Included	Reclassification from Equity to Profit or Loss and the Adjusted Line Item	
				Amount Reclassified to P/L and the Adjusted Line Item	Due to Hedged Future Cash Flows No Longer Expected to Occur
Cash flow hedge					
Forecast equipment purchases	\$ (3,788)	\$ -	-	\$ - Construction in progress and equipment to be accepted	\$ - Other gains and losses

Three months ended March 31,2018

Hedge Transaction	Comprehensive Income				
	Hedging Gains Recognized in OCI	Amount of Hedge Ineffectiveness Recognized in Profit or Loss	Line Item in Which Hedge Ineffectiveness is Included	Reclassification from Equity to Profit or Loss and the Adjusted Line Item	
				Amount Reclassified to P/L and the Adjusted Line Item	Due to Hedged Future Cash Flows No Longer Expected to Occur
Cash flow hedge					
Forecast equipment purchases	\$ 897	\$ -	-	\$ (806) Construction in progress and equipment to be accepted	\$ (59) Other gains and losses



## 21. SHORT-TERM LOANS

	<b>March 31, 2019</b>	<b>December 31, 2018</b>	<b>March 31, 2018</b>
Unsecured loans	<u>\$ 175,000</u>	<u>\$ 100,000</u>	<u>\$ 170,000</u>

The annual interest rates of loans were as follows:

	<b>March 31, 2019</b>	<b>December 31, 2018</b>	<b>March 31, 2018</b>
Unsecured loans	1.15%-2.50%	1.35%-2.35%	1.20%-2.19%

## 22. LONG-TERM LOANS (INCLUDING LONG-TERM LOANS - CURRENT PORTION)

	<b>March 31, 2019</b>	<b>December 31, 2018</b>	<b>March 31, 2018</b>
Secured loans (Note 37)	<u>\$ 1,600,000</u>	<u>\$ 1,600,000</u>	<u>\$ 1,600,000</u>

The annual interest rates of loans were as follows:

	<b>March 31, 2019</b>	<b>December 31, 2018</b>	<b>March 31, 2018</b>
Secured loans	0.92%	0.92%	0.91%

LED obtained a secured loan from Chang Hwa Bank in September 2010. Interest is paid monthly. \$300,000 thousand and \$1,350,000 thousand were originally due in December 2014 and September 2015, respectively. In October 2014, the bank borrowing mentioned above was extended to September 2018 for one time repayment. LED made an early repayment of \$50,000 thousand in April 2015. LED entered into a contract with Chang Hwa Bank to renew the contract upon the maturity of the aforementioned contract in December 2017 and the due date of the renew contract is September 2021.

## 23. TRADE NOTES AND ACCOUNTS PAYABLE

	<b>March 31, 2019</b>	<b>December 31, 2018</b>	<b>March 31, 2018</b>
Trade notes and accounts payable	<u>\$ 14,948,306</u>	<u>\$ 20,464,792</u>	<u>\$ 14,695,321</u>

Trade notes and accounts payable were attributable to operating activities and the trading conditions were agreed separately.

## 24. OTHER PAYABLES

	March 31, 2019	December 31, 2018	March 31, 2018
Accrued salary and compensation	\$ 5,531,189	\$ 9,040,692	\$ 6,371,806
Accrued compensation to employees and remuneration to directors and supervisors	2,136,648	1,738,716	2,428,290
Accrued franchise fees	1,425,770	1,151,084	1,535,484
Payables to contractors	1,293,063	1,709,778	1,242,473
Amounts collected for others	1,262,882	1,226,031	1,220,575
Payables to equipment suppliers	1,190,671	1,459,246	1,337,331
Accrued maintenance costs	1,140,817	1,049,849	961,444
Others	<u>6,312,266</u>	<u>5,939,987</u>	<u>6,477,922</u>
	<u>\$ 20,293,306</u>	<u>\$ 23,315,383</u>	<u>\$ 21,575,325</u>

## 25. PROVISIONS

	March 31, 2019	December 31, 2018	March 31, 2018
Warranties	\$ 137,307	\$ 131,664	\$ 130,160
Employee benefits	52,836	51,393	44,707
Others	<u>20,366</u>	<u>23,770</u>	<u>4,417</u>
	<u>\$ 210,509</u>	<u>\$ 206,827</u>	<u>\$ 179,284</u>
Current	\$ 131,367	\$ 128,200	\$ 100,012
Noncurrent	<u>79,142</u>	<u>78,627</u>	<u>79,272</u>
	<u>\$ 210,509</u>	<u>\$ 206,827</u>	<u>\$ 179,284</u>

	Warranties	Employee Benefits	Others	Total
Balance on January 1, 2018	\$ 131,789	\$ 43,429	\$ 4,467	\$ 179,685
Additional provisions recognized	21,061	1,278	-	22,339
Used / forfeited during the period	<u>(22,690)</u>	<u>-</u>	<u>(50)</u>	<u>(22,740)</u>
Balance on March 31, 2018	<u>\$ 130,160</u>	<u>\$ 44,707</u>	<u>\$ 4,417</u>	<u>\$ 179,284</u>
Balance on January 1, 2019	\$ 131,664	\$ 51,393	\$ 23,770	\$ 206,827
Additional provisions recognized	22,516	1,443	-	23,959
Used / forfeited during the period	<u>(16,873)</u>	<u>-</u>	<u>(3,404)</u>	<u>(20,277)</u>
Balance on March 31, 2019	<u>\$ 137,307</u>	<u>\$ 52,836</u>	<u>\$ 20,366</u>	<u>\$ 210,509</u>

- a. The provision for warranties claims represents the present value of the management's best estimate of the future outflow of economic benefits that will be required under the Company's obligation for warranties in sales agreements. The estimate has been made based on the historical warranty experience.
- b. The provision for employee benefits represents vested long-term service compensation accrued.

## 26. RETIREMENT BENEFIT PLANS

According to the Article 56 of the Labor Standards Law revised in February 2015, entities are required to contribute the difference in one appropriation to their pension funds before the end of next March when the balance of the Funds is insufficient to pay the eligible employees who meet the retirement criteria in the following year. Chunghwa contributed \$2,118,583 thousand to its pension fund as of March 31, 2018. There is no difference that requires to contribute into the Fund in 2019.

Relevant pension costs for defined benefit plans which were determined by the pension cost rates of actuarial valuation as of December 31, 2018 and 2017 were as follows:

	<b>Three Months Ended March 31</b>	
	<b>2019</b>	<b>2018</b>
Operating costs	\$ 432,574	\$ 449,306
Marketing expenses	215,652	222,212
General and administrative expenses	40,300	40,397
Research and development expenses	<u>26,361</u>	<u>26,553</u>
	<u>\$ 714,887</u>	<u>\$ 738,468</u>

## 27. EQUITY

- a. Share capital

- 1) Common stocks

	<b>March 31, 2019</b>	<b>December 31, 2018</b>	<b>March 31, 2018</b>
Number of authorized shares (thousand)	<u>12,000,000</u>	<u>12,000,000</u>	<u>12,000,000</u>
Authorized shares	<u>\$ 120,000,000</u>	<u>\$ 120,000,000</u>	<u>\$ 120,000,000</u>
Number of issued and paid shares (thousand)	<u>7,757,447</u>	<u>7,757,447</u>	<u>7,757,447</u>
Issued shares	<u>\$ 77,574,465</u>	<u>\$ 77,574,465</u>	<u>\$ 77,574,465</u>

The issued common stocks of a par value at \$10 per share entitled the right to vote and receive dividends.

## 2) Global depositary receipts

The MOTC and some stockholders sold some common stocks of Chunghwa in an international offering of securities in the form of American Depositary Shares (“ADS”) (one ADS represents 10 common stocks) in July 2003, August 2005, and September 2006. The ADSs were traded on the New York Stock Exchange since July 17, 2003. As of March 31, 2019, the outstanding ADSs were 235,037 thousand common stocks, which equaled 23,504 thousand units and represented 3.03% of Chunghwa’s total outstanding common stocks.

The ADS holders generally have the same rights and obligations as other common stockholders, subject to the provision of relevant laws. The exercise of such rights and obligations shall comply with the related regulations and deposit agreement, which stipulate, among other things, that ADS holders are entitled to, through deposit agents:

- a) Exercise their voting rights,
- b) Sell their ADSs, and
- c) Receive dividends declared and subscribe to the issuance of new shares.

## b. Additional paid-in capital

The adjustments of additional paid-in capital for the three months ended March 31, 2019 and 2018 were as follows:

	Share Premium	Movements of Additional Paid-in Capital for Associates Accounted for Using Equity Method	Movements of Additional Paid-in Capital Arising from Changes in Equities of Subsidiaries	Difference between Consideration Received and Carrying Amount of the Subsidiaries’ Net Assets upon Disposal	Donated Capital	Stockholders’ Contribution due to Privatization	Total
Balance on January 1, 2018	\$ 147,329,386	\$ 90,937	\$ 1,221,046	\$ 161,243	\$ 16,193	\$ 20,648,078	\$ 169,466,883
Change in additional paid-in capital from investments in associates accounted for using equity method	-	(38)	-	-	-	-	(38)
Share-based payment transactions of subsidiaries	-	-	12,119	-	-	-	12,119
Balance on March 31, 2018	<u>\$ 147,329,386</u>	<u>\$ 90,899</u>	<u>\$ 1,233,165</u>	<u>\$ 161,243</u>	<u>\$ 16,193</u>	<u>\$ 20,648,078</u>	<u>\$ 169,478,964</u>
Balance on January 1, 2019	\$ 147,329,386	\$ 89,893	\$ 2,063,148	\$ 987,611	\$ 18,648	\$ 20,648,078	\$ 171,136,764
Change in additional paid-in capital from investments in associates accounted for using equity method	-	(872)	-	-	-	-	(872)
Share-based payment transactions of subsidiaries	-	-	(812)	-	-	-	(812)
Balance on March 31, 2019	<u>\$ 147,329,386</u>	<u>\$ 89,021</u>	<u>\$ 2,062,336</u>	<u>\$ 987,611</u>	<u>\$ 18,648</u>	<u>\$ 20,648,078</u>	<u>\$ 171,135,080</u>

Additional paid-in capital from share premium, donated capital and the difference between consideration received and the carrying amount of the subsidiaries’ net assets upon disposal may be utilized to offset deficits. Furthermore, when Chunghwa has no deficit, it may be distributed in cash or capitalized, which however is limited to a certain percentage of Chunghwa’s paid-in capital except the additional paid-in capital arising from claimed dividend can only be utilized to offset deficits.

The additional paid-in capital from movements of paid-in capital arising from changes in equities of subsidiaries may only be utilized to offset deficits.

Among additional paid-in capital from movements of investments in associates accounted for using equity method, the portion arising from the difference between consideration received and the carrying amount of the subsidiaries net assets upon disposal may be utilized to offset deficits; furthermore, when the Company has no deficit, it may be distributed in cash or capitalized. However, other additional paid-in capital recognized in proportion of share ownership may only be utilized to offset deficits.

c. Retained earnings and dividends policy

In accordance with the Chunghwa's Articles of Incorporation, Chunghwa must pay all outstanding taxes, offset deficits in prior years and set aside a legal reserve equal to 10% of its net income before distributing a dividend or making any other distribution to stockholders, except when the accumulated amount of such legal reserve equals to Chunghwa's total issued capital, and depending on its business needs or requirements, may also set aside or reverse special reserves. No less than 50% of the remaining earnings comprising remaining balance of net income, if any, plus cumulative undistributed earnings shall be distributed as stockholders' dividends, of which cash dividends to be distributed shall not be less than 50% of the total amount of dividends to be distributed. If cash dividend to be distributed is less than \$0.10 per share, such cash dividend shall be distributed in the form of common stocks.

Chunghwa should appropriate or reverse a special reserve in accordance with Rule No. 1010012865 and Rule No. 1010047490 issued by the FSC and the directive entitled "Questions and Answers on Special Reserves Appropriated Following the Adoption of Taiwan-IFRSs". Distributions can be made out of any subsequent reversal of the debit to other equity items.

The appropriation for legal reserve shall be made until the accumulated reserve equals the aggregate par value of the outstanding capital stock of Chunghwa. This reserve can only be used to offset a deficit, or, when the legal reserve has exceeded 25% of Chunghwa's paid-in capital, the excess may be transferred to capital or distributed in cash.

The appropriations of the 2018 earnings of Chunghwa proposed by the Chunghwa's Board of Directors on March 19, 2019 and the appropriations of the 2017 earnings of Chunghwa approved by the stockholders in their meetings on June 15, 2018 were as follows:

	<b>Appropriation of Earnings</b>		<b>Dividends Per Share (NT\$)</b>	
	<b>For Fiscal Year 2018</b>	<b>For Fiscal Year 2017</b>	<b>For Fiscal Year 2018</b>	<b>For Fiscal Year 2017</b>
Reversal of special reserve	\$ -	\$ 5,404		
Cash dividends	34,745,603	37,204,714	\$ 4.479	\$ 4.796

The appropriation of earnings for 2018 are subject to the resolution by the stockholders in their meeting to be held on June 21, 2019. Information of the appropriation of Chunghwa's earnings proposed by the Board of Directors and approved by the stockholders is available on the Market Observation Post System website.

d. Other adjustments

1) Exchange differences arising from the translation of the foreign operations

The exchange differences arising from the translation of the foreign operations from their functional currency to New Taiwan dollars were recognized as exchange differences arising from the translation of the foreign operations in other comprehensive income.

2) Unrealized gain or loss on financial assets at FVOCI

	<b>Three Months Ended March 31</b>	
	<b>2019</b>	<b>2018</b>
Balance on January 1, 2019	\$ 538,272	\$ 883,420
Unrealized gain or loss for the year		
Equity instruments	<u>(162,207)</u>	<u>(238,398)</u>
Balance on March 31, 2019	<u>\$ 376,065</u>	<u>\$ 645,022</u>

e. Noncontrolling interests

	<b>Three Months Ended March 31</b>	
	<b>2019</b>	<b>2018</b>
Balance on January 1, 2019	\$ 10,009,948	\$ 8,693,650
Effect of retrospective application	<u>(19,603)</u>	<u>-</u>
Beginning balance as adjusted	9,990,345	8,693,650
Shares attributed to noncontrolling interests		
Net income for the period	170,631	269,980
Exchange differences arising from the translation of the foreign operations	8,387	2,862
Unrealized gain or loss on financial assets at FVOCI	3,219	4,266
Income tax relating to remeasurments of defined benefit pension plans	-	1,509
Share of other comprehensive income of associates accounted for using equity method	90	(548)
Changes in additional paid-in capital from investments in associates accounted for using equity method	497	4
Share-based payment transactions of subsidiaries	15,570	21,590
Net increase in noncontrolling interests	<u>-</u>	<u>5,000</u>
Balance on March 31, 2019	<u>\$ 10,188,739</u>	<u>\$ 8,998,313</u>

**28. REVENUES**

	<b>Three Months Ended March 31</b>	
	<b>2019</b>	<b>2018</b>
Revenue from contracts with customers	<u>\$ 51,048,624</u>	<u>\$ 53,435,935</u>
Other revenues		
Rental income	191,711	156,333
Other	<u>90,826</u>	<u>40,090</u>
	<u>282,537</u>	<u>196,423</u>
	<u>\$ 51,331,161</u>	<u>\$ 53,632,358</u>

The information of performance obligations in customer contracts, please refer to Note 3 Summary of Significant Accounting Policies to the consolidated financial statements for the year ended December 31, 2018 for details.

a. Disaggregation of revenue

Three months ended March 31, 2019

	Domestic Fixed Communi- cations Business	Mobile Communi- cations Business	Internet Business	International Fixed Communi- cations Business	Others	Total
<u>Main Products and Service Revenues</u>						
Mobile services revenue	\$ -	\$ 14,721,342	\$ -	\$ -	\$ -	\$ 14,721,342
Sales of products	416,884	9,482,418	-	68,026	621,915	10,589,243
Local telephone and domestic long distance telephone services revenue	7,004,002	-	-	-	-	7,004,002
Broadband access and domestic leased line services revenue	5,512,974	-	-	-	-	5,512,974
Data Communications internet services revenue	-	-	5,240,314	-	-	5,240,314
International network and leased telephone services revenue	-	-	-	1,810,881	-	1,810,881
Others	<u>2,710,535</u>	<u>254,758</u>	<u>2,102,746</u>	<u>889,646</u>	<u>212,183</u>	<u>6,169,868</u>
	<u>\$ 15,644,395</u>	<u>\$ 24,458,518</u>	<u>\$ 7,343,060</u>	<u>\$ 2,768,553</u>	<u>\$ 834,098</u>	<u>\$ 51,048,624</u>

Three months ended March 31, 2018

	Domestic Fixed Communi- cations Business	Mobile Communi- cations Business	Internet Business	International Fixed Communi- cations Business	Others	Total
<u>Main Products and Service Revenues</u>						
Mobile services revenue	\$ -	\$ 16,037,024	\$ -	\$ -	\$ -	\$ 16,037,024
Sales of products	412,437	10,447,500	380	50,198	874,124	11,784,639
Local telephone and domestic long distance telephone services revenue	7,550,294	-	-	-	-	7,550,294
Broadband access and domestic leased line services revenue	5,627,812	-	-	-	-	5,627,812
Data Communications internet services revenue	-	-	5,266,520	-	-	5,266,520
International network and leased telephone services revenue	-	-	-	1,909,918	-	1,909,918
Others	<u>2,061,487</u>	<u>286,934</u>	<u>1,716,265</u>	<u>1,003,532</u>	<u>191,510</u>	<u>5,259,728</u>
	<u>\$ 15,652,030</u>	<u>\$ 26,771,458</u>	<u>\$ 6,983,165</u>	<u>\$ 2,963,648</u>	<u>\$ 1,065,634</u>	<u>\$ 53,435,935</u>

b. Contract balances

	March 31, 2019	December 31, 2018	March 31, 2018
Trade notes and account receivables (Note 9)	<u>\$ 27,524,272</u>	<u>\$ 30,075,503</u>	<u>\$ 29,999,086</u>
Contract assets			
Products and service bundling	\$ 6,888,091	\$ 7,122,875	\$ 9,718,903
Other	130,613	108,581	128,143
Less: Loss allowance	<u>(18,217)</u>	<u>(18,770)</u>	<u>-</u>
	<u>\$ 7,000,487</u>	<u>\$ 7,212,686</u>	<u>\$ 9,847,046</u>
Current	\$ 4,606,104	\$ 4,868,728	\$ 6,258,807
Non-current	<u>2,394,383</u>	<u>2,343,958</u>	<u>3,588,239</u>
	<u>\$ 7,000,487</u>	<u>\$ 7,212,686</u>	<u>\$ 9,847,046</u>

(Continued)

	<b>March 31, 2019</b>	<b>December 31, 2018</b>	<b>March 31, 2018</b>
Contract liabilities			
Telecommunications business	\$ 11,841,556	\$ 8,193,215	\$ 8,526,054
Project business	6,176,701	4,508,200	2,141,701
Products and service bundling	73,002	105,559	241,428
Other	<u>651,012</u>	<u>475,947</u>	<u>129,275</u>
	<u>\$ 18,742,271</u>	<u>\$ 13,282,921</u>	<u>\$ 11,038,458</u>
Current	\$ 12,417,476	\$ 10,687,772	\$ 8,654,115
Non-current	<u>6,324,795</u>	<u>2,595,149</u>	<u>2,384,343</u>
	<u>\$ 18,742,271</u>	<u>\$ 13,282,921</u>	<u>\$ 11,038,458</u>

(Concluded)

The changes in the contract asset and the contract liability balances primarily result from the timing difference between the satisfaction of performance obligations and the payments collected from customers.

The Company applies the simplified approach to providing for expected credit losses prescribed by IFRS 9, which permits the use of lifetime expected loss provision for receivables. Contract assets will be reclassified to trade receivables when the corresponding invoice is billed to the client. Contract assets have substantially the same risk characteristics as the trade receivables of the same types of contracts. Therefore, the Company concluded that the expected loss rates for trade receivables can be applied to the contract assets.

c. Incremental costs of obtaining contracts

	<b>March 31, 2019</b>	<b>December 31, 2018</b>	<b>March 31, 2018</b>
Noncurrent			
Incremental costs of obtaining contracts	<u>\$ 1,117,334</u>	<u>\$ 1,335,030</u>	<u>\$ 2,283,014</u>

The Company considered the past experience and the default clauses in the telecommunications service contracts and believes the commissions and equipment subsidies paid for obtaining such contracts are expected to be recoverable, therefore, such costs are capitalized. Amortization recognized in the three months ended March 31, 2019 and 2018 are \$376,902 thousand and \$452,276 thousand, respectively.

## 29. NET INCOME

a. Other income and expenses

	<b>Three Months Ended March 31</b>	
	<b>2019</b>	<b>2018</b>
Loss on disposal of property, plant and equipment	\$ (4,505)	\$ (20,572)
Impairment loss on intangible assets	<u>-</u>	<u>(50,750)</u>
	<u>\$ (4,505)</u>	<u>\$ (71,322)</u>



b. Other income

	<b>Three Months Ended March 31</b>	
	<b>2019</b>	<b>2018</b>
Rental income	\$ 19,566	\$ 17,459
Income from Piping Fund	618	13,971
Others	<u>36,162</u>	<u>24,730</u>
	<u>\$ 56,346</u>	<u>\$ 56,160</u>

c. Other gains and losses

	<b>Three Months Ended March 31</b>	
	<b>2019</b>	<b>2018</b>
Valuation loss on financial assets and liabilities at fair value through profit or loss, net	\$ (7,193)	\$ (419)
Net foreign currency exchange losses	(4,763)	(33,500)
Gain on disposal of financial instruments	-	5,754
Others	<u>(7,412)</u>	<u>(5,123)</u>
	<u>\$ (19,368)</u>	<u>\$ (33,288)</u>

d. Impairment loss (reversal of impairment loss)

	<b>Three Months Ended March 31</b>	
	<b>2019</b>	<b>2018</b>
Contract assets	<u>\$ (553)</u>	<u>\$ -</u>
Trade notes and accounts receivable	<u>\$ (2,227)</u>	<u>\$ 320,388</u>
Other receivables	<u>\$ (53,173)</u>	<u>\$ 77,532</u>
Inventories	<u>\$ 95,682</u>	<u>\$ 32,476</u>
Intangible assets	<u>\$ -</u>	<u>\$ 50,750</u>

e. Depreciation and amortization expenses

	<b>Three Months Ended March 31</b>	
	<b>2019</b>	<b>2018</b>
Property, plant and equipment	\$ 6,708,694	\$ 6,890,231
Right-of-use assets	974,947	-
Investment properties	9,728	5,196
Intangible assets	1,064,194	1,069,983
Incremental costs of obtaining contracts	<u>376,902</u>	<u>452,276</u>
Total depreciation and amortization expenses	<u>\$ 9,134,465</u>	<u>\$ 8,417,686</u>
Depreciation expenses summarized by functions		
Operating costs	\$ 7,196,349	\$ 6,504,990
Operating expenses	<u>497,020</u>	<u>390,437</u>
	<u>\$ 7,693,369</u>	<u>\$ 6,895,427</u>

(Continued)

	<b>Three Months Ended March 31</b>	
	<b>2019</b>	<b>2018</b>
Amortization expenses summarized by functions		
Operating costs	\$ 1,384,458	\$ 1,455,765
Marketing expenses	24,608	34,239
General and administrative expenses	23,287	23,967
Research and development expenses	<u>8,743</u>	<u>8,288</u>
	<u>\$ 1,441,096</u>	<u>\$ 1,522,259</u>
		(Concluded)

f. Employee benefit expenses

	<b>Three Months Ended March 31</b>	
	<b>2019</b>	<b>2019</b>
Post-employment benefit		
Defined contribution plans	\$ 162,553	\$ 154,629
Defined benefit plans	<u>714,887</u>	<u>738,468</u>
	<u>877,440</u>	<u>893,097</u>
Share-based payment		
Equity-settled share-based payment	<u>430</u>	<u>410</u>
Other employee benefit		
Salaries	6,348,313	6,530,999
Insurance	714,858	708,161
Others	<u>3,453,336</u>	<u>3,590,518</u>
	<u>10,516,507</u>	<u>10,829,678</u>
Total employee benefit expenses	<u>\$ 11,394,377</u>	<u>\$ 11,723,185</u>
Summary by functions		
Operating costs	\$ 5,888,047	\$ 6,131,925
Operating expenses	<u>5,506,330</u>	<u>5,591,260</u>
	<u>\$ 11,394,377</u>	<u>\$ 11,723,185</u>

Chunghwa distributes employees' compensation at the rates from 1.7% to 4.3% and remuneration to directors not higher than 0.17%, respectively, of pre-tax income.

If there is a change in the proposed amounts after the annual financial statements are authorized for issue, the differences are recorded as a change in accounting estimate.

The compensation to the employees and remuneration to the directors of 2018 and 2017 approved by the Board of Directors on March 19, 2019 and March 13, 2018, respectively, were as follows. The compensation to the employees and remuneration to the directors of 2018 will be reported to the stockholders in their meeting planned to be held on June 21, 2019.

	<b>Cash</b>	
	<b>2018</b>	<b>2017</b>
Compensation distributed to the employees	\$ 1,404,264	\$ 1,596,012
Remuneration paid to the directors	38,216	40,750

There was no difference between the initial accrual amounts and the amounts approved in the Board of Directors in 2019 and 2018 of the aforementioned compensation to employees and the remuneration to directors.

Information of the appropriation of Chunghwa's employees compensation and remuneration to directors and those approved by the Board of Directors is available on the Market Observation Post System website.

### 30. INCOME TAX

#### a. Income tax recognized in profit or loss

The major components of income tax expense were as follows:

	<b>Three Months Ended March 31</b>	
	<b>2019</b>	<b>2018</b>
Current tax		
Current tax expenses recognized for the period	\$ 2,007,019	\$ 1,777,874
Income tax adjustments on prior years	(11,409)	180
Others	<u>4,497</u>	<u>500</u>
	<u>2,000,107</u>	<u>1,778,554</u>
Deferred tax		
Deferred tax expenses recognized for the period	17,903	345,325
Income tax adjustments on prior years	-	(221)
Change in tax rate	<u>-</u>	<u>(37,652)</u>
	<u>17,903</u>	<u>307,452</u>
Income tax recognized in profit or loss	<u>\$ 2,018,010</u>	<u>\$ 2,086,006</u>

Income Tax Act in the ROC was amended in 2018 and the corporate income tax rate is adjusted from 17% to 20%. All deferred tax resulting from the change of tax rate has been recognized in profit or loss in the period in which the change in tax rate occurs. In addition, the rate of the corporate surtax applicable to 2018 unappropriated earnings is reduced from 10% to 5%. The applicable tax rate used by subsidiaries in China is 25%, and tax rates used by other entities in the Company operating in other jurisdictions are based on the tax laws in those jurisdictions.

#### b. Income tax benefit recognized in other comprehensive income

	<b>Three Months Ended March 31</b>	
	<b>2019</b>	<b>2018</b>
Deferred tax benefit		
Change in tax rate	<u>\$ -</u>	<u>\$ (207,269)</u>

#### c. Income tax examinations

Income tax returns of Chunghwa have been examined by the tax authorities through 2015. Income tax returns of Aval, CHSI, CHPT, HHI and CHST have been examined by the tax authorities through 2016. Income tax returns of SENAO, CHIEF, CHI, LED, Unigate, CLPT, SFD, CHYP, CHTSC, SHE, ISPOT, Youth, Youyi and SENYOUNG have been examined by the tax authorities through 2017.

### 31. EARNINGS PER SHARE (“EPS”)

Net income and weighted average number of common stocks used in the calculation of earnings per share were as follows:

#### Net Income

	<u>Three Months Ended March 31</u>	
	<u>2019</u>	<u>2018</u>
Net income used to compute the basic earnings per share		
Net income attributable to the parent	\$ 8,356,082	\$ 8,727,524
Assumed conversion of all dilutive potential common stocks		
Employee stock options and employee compensation of subsidiaries	<u>(1,376)</u>	<u>(100)</u>
Net income used to compute the diluted earnings per share	<u>\$ 8,354,706</u>	<u>\$ 8,727,424</u>

#### Weighted Average Number of Common Stocks

(Thousand Shares)

	<u>Three Months Ended March 31</u>	
	<u>2019</u>	<u>2018</u>
Weighted average number of common stocks used to compute the basic earnings per share	7,757,447	7,757,447
Assumed conversion of all dilutive potential common stocks		
Employee compensation	<u>12,777</u>	<u>4,707</u>
Weighted average number of common stocks used to compute the diluted earnings per share	<u>7,770,224</u>	<u>7,762,154</u>

Because Chunghwa may settle the employee compensation in shares or cash, Chunghwa shall presume that it will be settled in shares and takes those shares into consideration when calculating the weighted average number of outstanding shares used in the calculation of diluted EPS if the shares have a dilutive effect. The dilutive effect of the shares needs to be considered until the approval of the number of shares to be distributed to employees as compensation in the following year.

### 32. SHARE-BASED PAYMENT ARRANGEMENT

a. SENAO share-based compensation plan (“SENAO Plan”) described as follows:

<b>Effective Date for Plan Registration</b>	<b>Resolution Date by SENAO’s Board of Directors</b>	<b>Stock Options Units (Thousand)</b>	<b>Exercise Price (NT\$)</b>
2012.05.28	2013.04.29	10,000	\$66.20 (Original price \$93.00)

Each option is eligible to subscribe for one common share when exercisable. Under the terms of the SENAO Plan, the options are granted at an exercise price equal to the closing price of the SENAO's common stocks listed on the TSE on the higher of closing price or par value. The SENAO Plan have exercise price adjustment formula upon the changes in common stocks equity (including cash capital increase, new share issue through capitalization of earnings and additional paid-in capital, merger, spin off and new share issue for Global Depository Shares, and so on) or distribution of cash dividends. The options of SENAO Plan are valid for six years and the graded vesting schedule for which 50% of option granted will vest two years after the grant date and another two tranches of 25%, each will vest three and four years after the grant date respectively.

No compensation cost of stock options granted on May 7, 2013 was recognized for the three months ended March 31, 2018 and 2019, respectively.

SENAO modified the plan terms of the outstanding stock options in July 2018 and the exercise price changed from \$70.70 to \$66.20 per share. The modification did not cause any incremental fair value granted.

Information about SENAO's outstanding stock options for the three months ended March 31, 2019 and 2018 was as follows:

	<b>Three Months Ended March 31</b>			
	<b>2019</b>		<b>2018</b>	
	<b>Granted on May 7, 2013</b>		<b>Granted on May 7, 2013</b>	
	<b>Number of Options (Thousand)</b>	<b>Weighted Average Exercise Price (NT\$)</b>	<b>Number of Options (Thousand)</b>	<b>Weighted Average Exercise Price (NT\$)</b>
Options outstanding at beginning of the period	5,318	\$ 66.20	5,926	\$ 70.70
Options forfeited	<u>(602)</u>	-	<u>(50)</u>	-
Options outstanding at end of the period	<u>4,716</u>	66.20	<u>5,876</u>	70.70
Option exercisable at end of the period	<u>4,716</u>	66.20	<u>5,876</u>	70.70

As of March 31, 2019, information about employee stock options outstanding was as follows:

<b>Range of Exercise Price (NT\$)</b>	<b>Options Outstanding</b>			<b>Options Exercisable</b>	
	<b>Number of Options (Thousand)</b>	<b>Weighted Average Remaining Contractual Life (Years)</b>	<b>Weighted Average Exercise Price (NT\$)</b>	<b>Number of Options (Thousand)</b>	<b>Weighted Average Exercise Price (NT\$)</b>
\$ 66.20	4,716	0.10	\$ 66.20	4,716	\$ 66.20

As of December 31, 2018, information about employee stock options outstanding was as follows:

Options Outstanding			Options Exercisable		
Range of Exercise Price (NT\$)	Number of Options (Thousand)	Weighted Average Remaining Contractual Life (Years)	Weighted Average Exercise Price (NT\$)	Number of Options (Thousand)	Weighted Average Exercise Price (NT\$)
\$ 66.20	5,318	0.35	\$ 66.20	5,318	\$ 66.20

As of March 31, 2018, information about employee stock options outstanding was as follows:

Options Outstanding			Options Exercisable		
Range of Exercise Price (NT\$)	Number of Options (Thousand)	Weighted Average Remaining Contractual Life (Years)	Weighted Average Exercise Price (NT\$)	Number of Options (Thousand)	Weighted Average Exercise Price (NT\$)
\$ 70.70	5,876	1.10	\$ 70.70	5,876	\$ 70.70

SENAO used the fair value method to evaluate the options using the Black-Scholes model and the related assumptions and the fair value of the options were as follows:

	<b>Stock Options Granted on May 7, 2013</b>
Grant-date share price (NT\$)	\$93.00
Exercise price (NT\$)	\$93.00
Dividends yield	-
Risk-free interest rate	0.91%
Expected life	4.375 years
Expected volatility	36.22%
Weighted average fair value of grants (NT\$)	\$28.72

Expected volatility was based on the historical share price volatility of SENAO over the period equal to the expected life of SENAO Plan.

- b. CHIEF share-based compensation plan (“CHIEF Plan”) described as follows:

Effective Date for Plan Registration	Resolution Date by CHIEF’s Board of Directors	Stock Options Units	Exercise Price (NT\$)
2017.12.18	2017.12.19	950.00	\$ 140.60 (Original price \$ 147.00)
	2018.10.31	50.00	\$ 147.00
2015.11.17	2015.10.22	2,000.00	\$ 34.40 (Original price \$ 43.00)

Each option is eligible to subscribe for one thousand common stocks when exercisable. The options are granted to specific employees that meet the vesting conditions. The CHIEF Plan has exercise price adjustment formula upon the changes in common stocks or distribution of cash dividends. The options of CHIEF Plan are valid for five years and the graded vesting schedule will vest two years after the grant date.

The compensation cost for stock options granted on October 31, 2018 was \$138 thousand for the three months ended March 31, 2019.

The compensation costs for stock options granted on December 19, 2017 were \$168 thousand and \$94 thousand for the three months ended March 31, 2019 and 2018, respectively.

The compensation costs for stock options granted on October 22, 2015 were \$124 thousand and \$316 thousand for the three months ended March 31, 2019 and 2018, respectively.

CHIEF modified the plan terms of stock options granted on December 19, 2017 in June and August 2018 and the exercise price changed from \$147.00 to \$144.10 and \$144.10 to \$140.60 per share, respectively. The modification did not cause any incremental fair value granted.

Information about CHIEF's outstanding stock options for the three months ended March 31, 2019 and 2018 was as follows:

	<b>Three Months Ended March 31, 2019</b>					
	<b>Granted on October 31, 2018</b>		<b>Granted on December 19, 2017</b>		<b>Granted on October 22, 2015</b>	
	<b>Number of Options</b>	<b>Weighted Average Exercise Price (NT\$)</b>	<b>Number of Options</b>	<b>Weighted Average Exercise Price (NT\$)</b>	<b>Number of Options</b>	<b>Weighted Average Exercise Price (NT\$)</b>
<u>Employee stock options</u>						
Options outstanding at beginning of the period	50.00	\$ 147.00	925.00	\$ 140.60	882.75	\$ 34.40
Options exercised	-	-	-	-	(416.50)	34.40
Options outstanding at end of the period	<u>50.00</u>	147.00	<u>925.00</u>	140.60	<u>466.25</u>	34.40
Options exercisable at end of the period	<u>=</u>	-	<u>=</u>	-	<u>=</u>	-

	<b>Three Months Ended March 31, 2018</b>			
	<b>Granted on December 19, 2017</b>		<b>Granted on October 22, 2015</b>	
	<b>Number of Options (Thousand)</b>	<b>Weighted Average Exercise Price (NT\$)</b>	<b>Number of Options (Thousand)</b>	<b>Weighted Average Exercise Price (NT\$)</b>
<u>Employee stock options</u>				
Options outstanding at beginning of the period	950	\$ 147.00	1,936	\$ 34.40
Options exercised	-	-	(968)	34.40
Options forfeited	<u>(12)</u>	-	<u>(4)</u>	-
Options outstanding at end of the period	<u>938</u>	147.00	<u>964</u>	34.40
Option exercisable at end of the period	<u>=</u>	-	<u>=</u>	-

As of March 31, 2019, information about employee stock options outstanding was as follows:

<b>Granted on October 31, 2018</b>					
<b>Options Outstanding</b>				<b>Options Exercisable</b>	
<b>Range of Exercise Price (NT\$)</b>	<b>Number of Options</b>	<b>Weighted Average Remaining Contractual Life (Years)</b>	<b>Weighted Average Exercise Price (NT\$)</b>	<b>Number of Options</b>	<b>Weighted Average Exercise Price (NT\$)</b>
\$147.00	50.00	4.58	\$147.00	-	\$ -

<b>Granted on December 19, 2017</b>					
<b>Options Outstanding</b>				<b>Options Exercisable</b>	
<b>Range of Exercise Price (NT\$)</b>	<b>Number of Options</b>	<b>Weighted Average Remaining Contractual Life (Years)</b>	<b>Weighted Average Exercise Price (NT\$)</b>	<b>Number of Options</b>	<b>Weighted Average Exercise Price (NT\$)</b>
\$140.60	925.00	3.72	\$140.60	-	\$ -

<b>Granted on October 22, 2015</b>					
<b>Options Outstanding</b>				<b>Options Exercisable</b>	
<b>Range of Exercise Price (NT\$)</b>	<b>Number of Options</b>	<b>Weighted Average Remaining Contractual Life (Years)</b>	<b>Weighted Average Exercise Price (NT\$)</b>	<b>Number of Options</b>	<b>Weighted Average Exercise Price (NT\$)</b>
\$ 34.40	466.25	1.56	\$ 34.40	-	\$ -

As of December 31, 2018, information about employee stock options outstanding was as follows:

<b>Granted on October 31, 2018</b>					
<b>Options Outstanding</b>				<b>Options Exercisable</b>	
<b>Range of Exercise Price (NT\$)</b>	<b>Number of Options</b>	<b>Weighted Average Remaining Contractual Life (Years)</b>	<b>Weighted Average Exercise Price (NT\$)</b>	<b>Number of Options</b>	<b>Weighted Average Exercise Price (NT\$)</b>
\$147.00	50.00	4.83	\$147.00	-	\$ -

<b>Granted on December 19, 2017</b>					
<b>Options Outstanding</b>				<b>Options Exercisable</b>	
<b>Range of Exercise Price (NT\$)</b>	<b>Number of Options</b>	<b>Weighted Average Remaining Contractual Life (Years)</b>	<b>Weighted Average Exercise Price (NT\$)</b>	<b>Number of Options</b>	<b>Weighted Average Exercise Price (NT\$)</b>
\$140.60	925.00	3.96	\$140.60	-	\$ -



<b>Granted on October 22, 2015</b>					
<b>Options Outstanding</b>			<b>Options Exercisable</b>		
<b>Range of Exercise Price (NT\$)</b>	<b>Number of Options</b>	<b>Weighted Average Remaining Contractual Life (Years)</b>	<b>Weighted Average Exercise Price (NT\$)</b>	<b>Number of Options</b>	<b>Weighted Average Exercise Price (NT\$)</b>
\$ 34.40	882.75	1.81	\$ 34.40	416.50	\$ 34.40

As of March 31, 2018, information about employee stock options outstanding was as follows:

<b>Granted on December 19, 2017</b>					
<b>Options Outstanding</b>			<b>Options Exercisable</b>		
<b>Range of Exercise Price (NT\$)</b>	<b>Number of Options</b>	<b>Weighted Average Remaining Contractual Life (Years)</b>	<b>Weighted Average Exercise Price (NT\$)</b>	<b>Number of Options</b>	<b>Weighted Average Exercise Price (NT\$)</b>
\$147.00	938	4.72	\$147.00	-	\$ -

<b>Granted on October 22, 2015</b>					
<b>Options Outstanding</b>			<b>Options Exercisable</b>		
<b>Range of Exercise Price (NT\$)</b>	<b>Number of Options</b>	<b>Weighted Average Remaining Contractual Life (Years)</b>	<b>Weighted Average Exercise Price (NT\$)</b>	<b>Number of Options</b>	<b>Weighted Average Exercise Price (NT\$)</b>
\$ 34.40	964	2.56	\$ 34.40	-	\$ -

CHIEF used the fair value method to evaluate the options using the Black-Scholes model and binomial option pricing model and the related assumptions and the fair value of the options were as follows:

	<b>Stock Options Granted on October 31, 2018</b>	<b>Stock Options Granted on December 19, 2017</b>	<b>Stock Options Granted on October 22, 2015</b>
Grant-date share price (NT\$)	\$166.00	\$95.92	\$39.55
Exercise price (NT\$)	\$147.00	\$147.00	\$43.00
Dividends yield	-	-	-
Risk-free interest rate	0.72%	0.62%	0.86%
Expected life	5 years	5 years	5 years
Expected volatility	16.60%	17.35%	21.02%
Weighted average fair value of grants (NT\$)	\$33,540	\$2,318	\$4,863

Expected volatility was based on the average annualized historical share price volatility of CHIEF's comparable companies before the grant date.

c. New shares reserved for subscription by employees under cash injection of CHIEF

In March 2018, the Board of Directors of CHIEF approved the cash injection to issue 7,842 thousand shares and simultaneously reserved 1,176 thousand shares for subscription by employees according to the Company Act of the ROC. Furthermore, when the employees subscribed some shares or discarded their rights to subscribe shares, the Board of Directors of CHIEF authorized the chairman of the Board of Directors to contact specific people or group to subscribe.

The aforementioned options granted to employees are accounted for and measured at fair value of the grant date. No compensation cost was recognized for the year ended December 31, 2018.

CHIEF used the fair value method to evaluate the options granted to employees on May 22, 2018 using the Black-Scholes model and the related assumptions and the fair value of the options were as follows:

	<b>Stock Options Granted on May 22, 2018</b>
Grant-date share price (NT\$)	\$156.41
Exercise price (NT\$)	\$170.00
Dividends yield	-
Risk-free interest rate	0.34%
Expected life	7 days
Expected volatility	14.33%
Weighted average fair value of grants (NT\$)	\$ -

Expected volatility was based on the average annualized historical share price volatility of CHIEF's comparable companies before the grant date.

### 33. CASH FLOW INFORMATION

For the three months ended March 31, 2019 and 2018, the Company entered into the following non-cash investing activities:

	<b>Three Months Ended March 31</b>	
	<b>2019</b>	<b>2018</b>
Increase in property, plant and equipment	\$ 3,795,681	\$ 3,219,033
Changes in other payables	<u>696,700</u>	<u>1,171,240</u>
	<u>\$ 4,492,381</u>	<u>\$ 4,390,273</u>

For the three months ended March 31, 2019, changes in liabilities arising from financing activities, including non-cash transactions, were as follows:

	<b>Balance on January 1, 2019</b>	<b>Cash Flows From Financing Activities</b>	<b>Changes In Non-Cash Transactions</b>		<b>Cash Flows From Operation Activities - Interest Paid</b>	<b>Balance on March 31, 2019</b>
			<b>New Leases</b>	<b>Others</b>		
Lease liabilities	<u>\$10,340,057</u>	<u>\$ (1,019,347)</u>	<u>\$ 799,527</u>	<u>\$ (245,466)</u>	<u>\$ (21,388)</u>	<u>\$ 9,853,383</u>

### 34. CAPITAL MANAGEMENT

The Company manages its capital to ensure that entities in the Company will be able to continue as going concerns while maximizing the return to stakeholders through the optimization of the debt and equity balance.

The capital structure of the Company consists of debt of the Company and the equity attributable to the parent.

Some consolidated entities are required to maintain minimum paid-in capital amount as prescribed by the applicable laws.

The management reviews the capital structure of the Company as needed. As part of this review, the management considers the cost of capital and the risks associated with each class of capital.

According to the management's suggestion, the Company maintains a balanced capital structure through paying cash dividends, increasing its share capital, purchasing outstanding shares, and proceeds from new debt or repayment of debt.

### 35. FINANCIAL INSTRUMENTS

#### Fair Value Information

The fair value measurement guidance establishes a framework for measuring fair value and expands disclosure about fair value measurements. The standard describes a fair value hierarchy based on three levels of inputs that may be used to measure fair value. These levels are:

Level 1 fair value measurements: These measurements are those derived from quoted prices (unadjusted) in active markets for identical assets or liabilities.

Level 2 fair value measurements: These measurements are those derived from inputs other than quoted prices included within Level 1 that are observable for the asset or liability, either directly (i.e. as prices) or indirectly (i.e. derived from prices).

Level 3 fair value measurements: These measurements are those derived from valuation techniques that include inputs for the asset or liability that are not based on observable market data (unobservable inputs).

- a. Financial instruments that are not measured at fair value but for which fair value is disclosed

The Company considers that the carrying amounts of financial assets and liabilities not measured at fair value approximate their fair values or the fair values cannot be reliably estimated, no financial instruments need to be disclosed on balance sheet date.

- b. Financial instruments that are measured at fair values on a recurring basis

March 31, 2019

	Level 1	Level 2	Level 3	Total
Financial assets at FVTPL				
Non-listed stocks	\$ -	\$ -	\$ 511,274	\$ 511,274

(Continued)

	<b>Level 1</b>	<b>Level 2</b>	<b>Level 3</b>	<b>Total</b>
Financial assets at FVOCI				
Equity investment	<u>\$ 2,599,314</u>	<u>\$ -</u>	<u>\$ 4,174,792</u>	<u>\$ 6,774,106</u>
Financial liabilities at FVTPL				
Derivatives	<u>\$ -</u>	<u>\$ 2,219</u>	<u>\$ -</u>	<u>\$ 2,219</u>
Hedging financial liabilities	<u>\$ -</u>	<u>\$ 2,719</u>	<u>\$ -</u>	<u>\$ 2,719</u> (Concluded)

December 31, 2018

	<b>Level 1</b>	<b>Level 2</b>	<b>Level 3</b>	<b>Total</b>
Financial assets at FVTPL				
Non-listed stocks	<u>\$ -</u>	<u>\$ -</u>	<u>\$ 517,362</u>	<u>\$ 517,362</u>
Hedging financial assets	<u>\$ -</u>	<u>\$ 1,069</u>	<u>\$ -</u>	<u>\$ 1,069</u>
Financial assets at FVOCI				
Equity investment	<u>\$ 2,899,843</u>	<u>\$ -</u>	<u>\$ 4,032,660</u>	<u>\$ 6,932,503</u>
Financial liabilities at FVTPL				
Derivatives	<u>\$ -</u>	<u>\$ 1,114</u>	<u>\$ -</u>	<u>\$ 1,114</u>

March 31, 2018

	<b>Level 1</b>	<b>Level 2</b>	<b>Level 3</b>	<b>Total</b>
Financial assets at FVTPL				
Derivatives	<u>\$ -</u>	<u>\$ 34</u>	<u>\$ -</u>	<u>\$ 34</u>
Hedging financial assets	<u>\$ -</u>	<u>\$ 47</u>	<u>\$ -</u>	<u>\$ 47</u>
Financial assets at FVOCI				
Equity investment	<u>\$ 2,847,119</u>	<u>\$ -</u>	<u>\$ 4,458,136</u>	<u>\$ 7,305,255</u>
Financial liabilities at FVTPL				
Derivatives	<u>\$ -</u>	<u>\$ 1,031</u>	<u>\$ -</u>	<u>\$ 1,031</u>

There were no transfers between Levels 1 and 2 for the three months ended March 31, 2019 and 2018.

For financial assets measured at Level 3, there is no other reconciliation item except for the change in fair value that is recognized in other comprehensive income or loss for the three months ended March 31, 2019.

The fair values of financial assets and financial liabilities of Level 2 are determined as follows:

- 1) The fair values of financial assets and financial liabilities with standard terms and conditions and traded in active markets are determined with reference to quoted market prices.

- 2) For derivatives, fair values are estimated using discounted cash flow model. Future cash flows are estimated based on observable inputs including forward exchange rates at the end of the reporting periods and the forward and spot exchange rates stated in the contracts, discounted at a rate that reflects the credit risk of various counterparties.

The fair values of non-listed domestic and foreign equity investments were Level 3 fair value assets, and determined using the market approach by reference the Price-to-Book ratios (P/B ratios) of peer companies that traded in active market or using assets approach. The significant unobservable inputs used were listed in the table below. A decrease in discount for the lack of marketability or noncontrolling interests discount would result in increases in the fair values.

	<b>March 31, 2019</b>	<b>December 31, 2018</b>	<b>March 31, 2018</b>
Discount for lack of marketability	12.73%-20.00%	12.73%-20.00%	14.25%-20.00%
Noncontrolling interests discount	24.41%-25.00%	24.41%-25.00%	23.00%-24.40%

If the inputs to the valuation model were changed to reflect reasonably possible alternative assumptions while all the other variables were held constant, the fair values of equity investments would increase as below table. When related discounts increase, the fair value of equity investments would be the negative amount of the same amount.

	<b>March 31, 2019</b>	<b>March 31, 2018</b>
Discount for lack of marketability 5% decrease	<u>\$ 271,635</u>	<u>\$ 253,671</u>
Noncontrolling interests discount 5% decrease	<u>\$ 16,940</u>	<u>\$ 20,222</u>

### **Categories of Financial Instruments**

	<b>March 31, 2019</b>	<b>December 31, 2018</b>	<b>March 31, 2018</b>
<u>Financial assets</u>			
Measured at FVTPL			
Mandatorily measured at FVTPL	\$ 511,274	\$ 517,362	\$ 34
Hedging financial assets	-	1,069	47
Financial assets at amortized cost (Note a)	74,794,074	70,240,962	69,694,334
Financial assets at FVOCI	6,774,106	6,932,503	7,305,255
<u>Financial liabilities</u>			
Measured at FVTPL			
Held for trading	2,219	1,114	1,031
Hedging financial liabilities	2,719	-	-
Measured at amortized cost (Note b)	34,356,341	40,335,289	34,215,170

Note a: The balances included cash and cash equivalents, trade notes and accounts receivable, receivables from related parties, other current monetary assets and refundable deposits (classified as other noncurrent assets), which were financial assets measured at amortized cost.

Note b: The balances included short-term loans, trade notes and accounts payable, payables to related parties, partial other payables, customers' deposits and long-term loans which were financial liabilities carried at amortized cost.

## Financial Risk Management Objectives

The main financial instruments of the Company include equity investments, accounts receivable, accounts payable, lease liabilities and loans. The Company's Finance Department provides services to its business units, co-ordinates access to domestic and international capital markets, monitors and manages the financial risks relating to the operations of the Company through internal risk reports which analyze exposures by degree and magnitude of risks. These risks include market risk (including foreign currency risk, interest rate risk and other price risk), credit risk, and liquidity risk.

The Company seeks to minimize the effects of these risks by using derivative financial instruments to hedge risk exposures. The use of financial derivatives is governed by the Company's policies approved by the Board of Directors. Those derivatives are used to hedge the risks of exchange rate fluctuation arising from operating or investment activities. Compliance with policies and risk exposure limits is reviewed by the Company's Finance Department on a continuous basis. The Company does not enter into or trade financial instruments, including derivative financial instruments, for speculative purposes.

Chunghwa reports the significant risk exposures and related action plans timely and actively to the audit committee and to the Board of Directors if needed.

### a. Market risk

The Company is exposed to market risks of changes in foreign currency exchange rates and interest rates. The Company uses forward exchange contracts to hedge the exchange rate risk arising from assets and liabilities denominated in foreign currencies.

There were no changes to the Company's exposure to market risks or the manner in which these risks are managed and measured.

#### 1) Foreign currency risk

The carrying amounts of the Company's foreign currency denominated monetary assets and monetary liabilities at the balance sheet dates were as follows:

	<b>March 31, 2019</b>	<b>December 31, 2018</b>	<b>March 31, 2018</b>
<b>Assets</b>			
USD	\$ 6,305,055	\$ 5,903,025	\$ 6,524,510
EUR	29,834	34,059	34,050
SGD	128,110	123,916	60,941
JPY	30,103	16,689	17,159
RMB	2,307	2,082	2,271
<b>Liabilities</b>			
USD	5,643,875	6,998,564	6,787,144
EUR	1,061,209	1,216,812	1,123,494
SGD	1,425,877	50,921	47,632
JPY	19,198	13,968	10,413

The carrying amounts of the Company's derivatives with exchange rate risk exposures at the balance sheet dates were as follows:

	March 31, 2019	December 31, 2018	March 31, 2018
Assets			
USD	\$ -	\$ -	\$ -
EUR	-	1,069	47
Liabilities			
USD	6	217	268
EUR	4,932	897	729

Foreign currency sensitivity analysis

The Company is mainly exposed to the fluctuations of the currencies USD, EUR, SGD, JPY and RMB listed above.

The following table details the Company's sensitivity to a 5% increase and decrease in the functional currency against the relevant foreign currencies. 5% is the sensitivity rate used when reporting foreign currency risk internally to key management personnel and represents management's assessment of the reasonably possible changes in foreign exchange rates. The sensitivity analysis includes only outstanding foreign currency denominated monetary items and forward exchange contracts. A positive number below indicates an increase in pre-tax profit or equity where the functional currency weakens 5% against the relevant currency.

	<u>Three Months Ended March 31</u>	
	2019	2018
Profit or loss		
Monetary assets and liabilities (a)		
USD	\$ 33,059	\$ (13,132)
EUR	(51,569)	(54,472)
SGD	(64,888)	665
RMB	115	114
JPY	545	337
Derivatives (b)		
USD	462	8,532
EUR	10,470	7,873
Equity		
Derivatives (c)		
EUR	12,469	2,238

- a) This is mainly attributable to the exposure to foreign currency denominated receivables and payables of the Company outstanding at the balance sheet dates.
- b) This is mainly attributable to the forward exchange contracts.
- c) This is mainly attributable to the changes in the fair value of derivatives that are designated as cash flow hedges.

For a 5% strengthening of the functional currency against the relevant currencies, it would have equal but opposite effect on the pre-tax profit or equity for the amounts shown above.

## 2) Interest rate risk

The carrying amounts of the Company's exposures to interest rates on financial assets and financial liabilities at the balance sheet dates were as follows:

	<b>March 31, 2019</b>	<b>December 31, 2018</b>	<b>March 31, 2018</b>
Fair value interest rate risk			
Financial assets	\$ 34,376,501	\$ 25,821,638	\$ 27,968,531
Financial liabilities	9,908,383	-	100,000
Cash flow interest rate risk			
Financial assets	8,558,623	9,160,863	7,891,396
Financial liabilities	1,720,000	1,700,000	1,670,000

### Interest rate sensitivity analysis

The sensitivity analyses below have been determined based on the exposure to interest rates for non-derivative instruments at the end of the reporting period. A 25 basis point increase or decrease is used when reporting interest rate risk internally to key management personnel and represents management's assessment of the reasonably possible change in interest rates.

If interest rates had been 25 basis points higher/lower and all other variables were held constant, the Company's pre-tax income would increase/decrease by \$17,097 thousand and \$15,553 thousand for the three months ended March 31, 2019 and 2018, respectively. This is mainly attributable to the Company's exposure to floating interest rates on its financial assets and short-term and long-term loan.

## 3) Other price risk

The Company is exposed to equity price risks arising from equity securities investments. Such investments are held for strategic rather than trading purposes. The management managed the risk through holding various risk portfolios. Further, the Company assigned finance and investment departments to monitor the price risk.

### Equity price sensitivity analysis

The sensitivity analyses below have been determined based on the exposure to equity price risks at the end of the reporting period.

If equity prices had been 5% higher/lower, pre-tax profit and pre-tax other comprehensive income would have increased/decreased by \$25,564 thousand and \$338,705 thousand as a result of the changes in fair value of financial assets at FVTPL and financial assets at FVOCI for the three months ended March 31, 2019. If equity prices had been 5% higher/lower, other comprehensive income would have increased/decreased by \$365,263 thousand as a result of the changes in fair value of financial assets at FVTPL for the three months ended March 31, 2018.

## b. Credit risk

Credit risk refers to the risk that a counterparty would default on its contractual obligations resulting in financial loss to the Company. The maximum credit exposure of the aforementioned financial instruments is equal to their carrying amounts recognized in consolidated balance sheet as of the balance sheet date.



The Company has large trade receivables outstanding with its customers. A substantial majority of the Company's outstanding trade receivables are not covered by collateral or credit insurance. The Company has implemented ongoing measures including enhancing credit assessments and strengthening overall risk management to reduce its credit risk. While the Company has procedures to monitor and limit exposure to credit risk on trade receivables, there can be no assurance such procedures will effectively limit its credit risk and avoid losses. This risk is heightened during periods when economic conditions worsen.

As the Company serves a large number of unrelated consumers, the concentration of credit risk was limited.

c. Liquidity risk

The Company manages and maintains sufficient cash and cash equivalent position to support the operations and reduce the impact on fluctuation of cash flow.

1) Liquidity and interest risk tables

The following tables detailed the Company's remaining contractual maturity for its non-derivative financial liabilities with agreed repayment periods. The tables had been drawn up based on the undiscounted cash flows of financial liabilities based on the earliest date on which the Company is required to pay.

	Weighted Average Effective Interest Rate (%)	Less than 1 Month	1-3 Months	3 Months to 1 Year	1-5 Years	Add More than 5 Years	Total
<u>March 31, 2019</u>							
Non-derivative financial liabilities							
Non-interest bearing	-	\$ 32,040,527	\$ 1,425,770	\$ 2,136,648	\$ 4,646,233	\$ -	\$ 40,249,178
Floating interest rate instruments	0.99	-	-	120,000	1,600,000	-	1,720,000
Fixed interest rate instruments	1.15	55,000	-	-	-	-	55,000
		<u>\$ 32,095,527</u>	<u>\$ 1,425,770</u>	<u>\$ 2,256,648</u>	<u>\$ 6,246,233</u>	<u>\$ -</u>	<u>\$ 42,024,178</u>

Information about the maturity analysis for lease liabilities was as follows:

	Less than 1 Year	1-3 Years	3-5 Years	Add More than 5 Years	Total
Lease liabilities	<u>\$ 3,555,491</u>	<u>\$ 4,339,888</u>	<u>\$ 1,600,769</u>	<u>\$ 707,739</u>	<u>\$10,203,887</u>

	Weighted Average Effective Interest Rate (%)	Less than 1 Month	1-3 Months	3 Months to 1 Year	1-5 Years	Add More than 5 Years	Total
<u>December 31, 2018</u>							
Non-derivative financial liabilities							
Non-interest bearing	-	\$ 41,808,326	\$ -	\$ 2,889,800	\$ 4,716,571	\$ -	\$ 49,414,697
Floating interest rate instruments	0.98	-	-	100,000	1,600,000	-	1,700,000
		<u>\$ 41,808,326</u>	<u>\$ -</u>	<u>\$ 2,989,800</u>	<u>\$ 6,316,571</u>	<u>\$ -</u>	<u>\$ 51,114,697</u>
<u>March 31, 2018</u>							
Non-derivative financial liabilities							
Non-interest bearing	-	\$ 32,721,624	\$ 1,535,484	\$ 2,428,290	\$ 4,559,868	\$ -	\$ 41,245,266
Floating interest rate instruments	0.96	-	-	20,000	1,650,000	-	1,670,000
Fixed interest rate instruments	1.20	100,000	-	-	-	-	100,000
		<u>\$ 32,821,624</u>	<u>\$ 1,535,484</u>	<u>\$ 2,448,290</u>	<u>\$ 6,209,868</u>	<u>\$ -</u>	<u>\$ 43,015,266</u>

The following table detailed the Company's liquidity analysis for its derivative financial instruments. The table had been drawn up based on the undiscounted gross inflows and outflows on those derivatives that require gross settlement.

	<b>Less than 1 Month</b>	<b>1-3 Months</b>	<b>3 Months to 1 Year</b>	<b>1-5 Years</b>	<b>Total</b>
<u>March 31, 2019</u>					
<u>Gross settled</u>					
Forward exchange contracts					
Inflow	\$ 9,239	\$ 459,818	\$ -	\$ -	\$ 469,057
Outflow	<u>9,245</u>	<u>464,750</u>	<u>-</u>	<u>-</u>	<u>473,995</u>
	<u>\$ (6)</u>	<u>\$ (4,932)</u>	<u>\$ -</u>	<u>\$ -</u>	<u>\$ (4,938)</u>
<u>December 31, 2018</u>					
<u>Gross settled</u>					
Forward exchange contracts					
Inflow	\$ 62,035	\$ 238,302	\$ 126,401	\$ -	\$ 426,738
Outflow	<u>62,252</u>	<u>238,459</u>	<u>126,072</u>	<u>-</u>	<u>426,783</u>
	<u>\$ (217)</u>	<u>\$ (157)</u>	<u>\$ 329</u>	<u>\$ -</u>	<u>\$ (45)</u>
<u>March 31, 2018</u>					
<u>Gross settled</u>					
Forward exchange contracts					
Inflow	\$ 170,635	\$ 178,352	\$ 23,888	\$ -	\$ 372,875
Outflow	<u>170,903</u>	<u>179,068</u>	<u>23,854</u>	<u>-</u>	<u>373,825</u>
	<u>\$ (268)</u>	<u>\$ (716)</u>	<u>\$ 34</u>	<u>\$ -</u>	<u>\$ (950)</u>

2) Financing facilities

	<b>March 31, 2019</b>	<b>December 31, 2018</b>	<b>March 31, 2018</b>
Unsecured bank loan facility			
Amount used	\$ 207,445	\$ 132,445	\$ 170,000
Amount unused	<u>46,046,655</u>	<u>46,328,280</u>	<u>45,512,417</u>
	<u>\$ 46,254,100</u>	<u>\$ 46,460,725</u>	<u>\$ 45,682,417</u>
Secured bank loan facility			
Amount used	\$ 1,600,000	\$ 1,600,000	\$ 1,600,000
Amount unused	<u>1,340,000</u>	<u>1,340,000</u>	<u>1,910,000</u>
	<u>\$ 2,940,000</u>	<u>\$ 2,940,000</u>	<u>\$ 3,510,000</u>

### 36. RELATED PARTIES TRANSACTIONS

The ROC Government, one of Chunghwa's customers, has significant equity interest in Chunghwa. Chunghwa provides fixed-line services, wireless services, internet and data and other services to the various departments and institutions of the ROC Government in the normal course of business and at arm's-length prices. The transactions with the ROC government bodies have not been disclosed because the transactions are not individually or collectively significant. However, the related revenues and operating costs have been appropriately recorded.

a. The Company engages in business transactions with the following related parties:

Company	Relationship
Taiwan International Standard Electronics Co., Ltd.	Associate
So-net Entertainment Taiwan Limited	Associate
KKBOX Taiwan Co., Ltd.	Associate
KingwayTek Technology Co., Ltd.	Associate
UUPON Inc.	Associate
Taiwan International Ports Logistics Corporation	Associate
International Integrated System, Inc.	Associate
Senao Networks, Inc.	Associate
EnGenius Tech. Co., Ltd.	Subsidiary of the Company's associate, Senao Networks, Inc.
Emplus Technologies, Inc.	Subsidiary of the Company's associate, Senao Networks, Inc.
HopeTech Technologies Limited	Associate
ST-2 Satellite Ventures Pte., Ltd.	Associate
Viettel-CHT Co., Ltd.	Associate
Click Force Co., Ltd.	Associate
Alliance Digital Tech Co., Ltd.	Associate
MeWorks LIMITED (HK)	Associate
Chunghwa PChome Fund I Co., Ltd. ("CPFI")	Associate
Cornerstone Ventures Co., Ltd. ("CVC")	Associate
Other related parties	
Chunghwa Telecom Foundation	A nonprofit organization of which the funds donated by Chunghwa exceeds one third of its total funds
Senao Technical and Cultural Foundation	A nonprofit organization of which the funds donated by SENAO exceeds one third of its total funds
Sochamp Technology Co., Ltd.	Investor of significant influence over CHST
E-Life Mall Co., Ltd.	One of the directors of E-Life Mall and a director of SENAO are members of an immediate family
Engenius Technologies Co., Ltd.	Chairman of Engenius Technologies Co., Ltd. is a member of SENAO's management
Cheng Keng Investment Co., Ltd.	Chairman of Cheng Keng Investment and SENAO's chief executive officer are members of an immediate family
Cheng Feng Investment Co., Ltd.	Chairman of Cheng Feng Investment and SENAO's chief executive officer are members of an immediate family

(Continued)

<u>Company</u>	<u>Relationship</u>
Hwa Shun Investment Co., Ltd.	Chairman of Hwa Shun Investment and SENAO's chief executive officer are members of an immediate family
United Daily News Co., Ltd.	Investor of significant influence over SFD
Shenzhen Century Communication Co., Ltd.	Investor of significant influence over SCT
Taoyuan Aerotropolis Co., Ltd.	Investor of significant influence over TASUI (Concluded)

- b. Balances and transactions between Chunghwa and its subsidiaries, which are related parties of Chunghwa, have been eliminated on consolidation and are not disclosed in this note. Terms of the foregoing transactions with related parties were not significantly different from transactions with non-related parties. When no similar transactions with non-related parties can be referenced, terms were determined in accordance with mutual agreements. Details of transactions between the Company and other related parties are disclosed below:

1) Operating transactions

	<u>Revenues</u>	
	<u>Three Months Ended March 31</u>	
	<u>2019</u>	<u>2018</u>
Associates	\$ 67,181	\$ 81,218
Others	<u>25,982</u>	<u>18,792</u>
	<u>\$ 93,163</u>	<u>\$ 100,010</u>
	<u>Operating Costs and Expenses</u>	
	<u>Three Months Ended March 31</u>	
	<u>2019</u>	<u>2018</u>
Associates	\$ 213,958	\$ 253,428
Others	<u>62,182</u>	<u>62,578</u>
	<u>\$ 276,140</u>	<u>\$ 316,006</u>

2) Non-operating transactions

	<u>Non-operating Income and Expenses</u>	
	<u>Three Months Ended March 31</u>	
	<u>2019</u>	<u>2018</u>
Associates	\$ (11,955)	\$ 7,812
Others	<u>9</u>	<u>9</u>
	<u>\$ (11,946)</u>	<u>\$ 7,821</u>

3) Receivables

	<b>March 31, 2019</b>	<b>December 31, 2018</b>	<b>March 31, 2018</b>
Associates	\$ 10,106	\$ 10,785	\$ 22,909
Others	<u>8,145</u>	<u>13,485</u>	<u>5,622</u>
	<u>\$ 18,251</u>	<u>\$ 24,270</u>	<u>\$ 28,531</u>

4) Payables

	<b>March 31, 2019</b>	<b>December 31, 2018</b>	<b>March 31, 2018</b>
Associates	\$ 357,595	\$ 914,177	\$ 410,616
Others	<u>3,738</u>	<u>3,774</u>	<u>4,136</u>
	<u>\$ 361,333</u>	<u>\$ 917,951</u>	<u>\$ 414,752</u>

5) Customers' deposits

	<b>March 31, 2019</b>	<b>December 31, 2018</b>	<b>March 31, 2018</b>
Associates	<u>\$ 5,870</u>	<u>\$ 5,925</u>	<u>\$ 5,188</u>

6) Lease-in agreements

Chunghwa entered into a contract with ST-2 Satellite Ventures Pte., Ltd. on March 12, 2010 to lease capacity on the ST-2 satellite. This lease term is for 15 years which should start from the official operation of ST-2 satellite and the total contract value is approximately \$6,000,000 thousand (SG\$260,723 thousand), including a prepayment of \$3,067,711 thousand, and the rest of amount should be paid annually when ST-2 satellite starts its official operation. ST-2 satellite was launched in May 2011, and began its official operation in August 2011.

2019

The lease liabilities of ST-2 Satellite Ventures Pte., Ltd. as of March 31, 2019 was as follows:

	<b>March 31, 2019</b>
Lease liabilities - current	\$ 192,260
Lease liabilities - noncurrent	<u>1,230,614</u>
	<u>\$ 1,422,874</u>

The interest expense recognized for the aforementioned lease liabilities was \$2,837 thousand for the three months ended March 31, 2019.

## 2018

The total rental expense for the three months ended March 31, 2018 was \$98,248 thousand, which consisted of an offsetting credit of the prepayment of \$51,100 thousand and an additional accrual of \$47,148 thousand. The prepaid rents (classified as prepayments) as of December 31, 2018 and March 31, 2018, were as follows:

	<b>December 31, 2018</b>	<b>March 31, 2018</b>
Prepaid rents - current	\$ 204,398	\$ 204,398
Prepaid rents - noncurrent	<u>1,345,623</u>	<u>1,498,921</u>
	<u>\$ 1,550,021</u>	<u>\$ 1,703,319</u>

### c. Compensation of key management personnel

The compensation of directors and key management personnel was as follows:

	<b>Three Months Ended March 31</b>	
	<b>2019</b>	<b>2019</b>
Short-term employee benefits	\$ 76,035	\$ 84,171
Post-employment benefits	2,158	2,408
Share-based payment	<u>68</u>	<u>86</u>
	<u>\$ 78,261</u>	<u>\$ 86,665</u>

The compensation of directors and key management personnel was mainly determined by the compensation committee having regard to the performance of individual and market trends.

## **37. PLEDGED ASSETS**

The following assets are pledged as collaterals for bank loans and custom duties of the imported materials.

	<b>March 31, 2019</b>	<b>December 31, 2018</b>	<b>March 31, 2018</b>
Property, plant and equipment	\$ 2,513,460	\$ 2,520,838	\$ 2,542,974
Land held under development (included in inventories)	1,998,733	1,998,733	1,998,733
Restricted assets (included in other assets - others)	<u>2,500</u>	<u>2,500</u>	<u>2,500</u>
	<u>\$ 4,514,693</u>	<u>\$ 4,522,071</u>	<u>\$ 4,544,207</u>

### 38. SIGNIFICANT CONTINGENT LIABILITIES AND UNRECOGNIZED COMMITMENTS

As of March 31, 2019, the Company's significant commitments and contingent liabilities, excluding those disclosed in other notes, were as follows:

- a. Acquisitions of land and buildings of \$153,759 thousand.
- b. Acquisitions of telecommunications equipment of \$21,170,687 thousand.
- c. Unused letters of credit amounting to \$50,000 thousand.
- d. A commitment to contribute \$2,000,000 thousand to a Piping Fund administered by the Taipei City Government, of which \$1,000,000 thousand was contributed by Chunghwa on August 15, 1996 (classified as other monetary assets - noncurrent). If the fund is not sufficient, Chunghwa will contribute the remaining \$1,000,000 thousand upon notification from the Taipei City Government.
- e. CHPT signed the contract for its headquarters construction amounted to \$1,613,800 thousand in July, 2017. The payment of \$566,555 thousand has been made as of March 31, 2019.

### 39. SIGNIFICANT ASSETS AND LIABILITIES DENOMINATED IN FOREIGN CURRENCIES

The following information summarizes the disclosure of the currency which is other than functional currency of Chunghwa and its subsidiaries. The following exchange rates are the exchange rates used to translate to the presentation currency in the consolidated financial statements, which is NTD:

	March 31, 2019		
	Foreign Currencies (Thousands)	Exchange Rate	New Taiwan Dollars (Thousands)
<u>Assets denominated in foreign currencies</u>			
Monetary items			
Cash			
USD	\$ 22,658	30.82	\$ 698,326
EUR	831	34.61	28,772
SGD	5,535	22.75	125,921
JPY	85,985	0.278	23,904
RMB	504	4.58	2,307
Accounts receivable			
USD	181,919	30.82	5,606,729
EUR	31	34.61	1,062
SGD	96	22.75	2,189
JPY	22,297	0.278	6,199
Non-monetary items			
Investments accounted for using equity method			
SGD	22,949	22.75	522,084
VND	250,242,975	0.00121	302,794

(Continued)

	<b>March 31, 2019</b>		
	<b>Foreign Currencies (Thousands)</b>	<b>Exchange Rate</b>	<b>New Taiwan Dollars (Thousands)</b>
<u>Liabilities denominated in foreign currencies</u>			
Monetary items			
Accounts payable	\$ 183,117	30.82	\$ 5,643,678
USD	30,662	34.61	1,061,209
EUR	29	22.75	650
SGD	69,059	0.278	19,198
JPY			
Lease liabilities			
USD	6	30.82	197
SGD	62,647	22.75	1,425,227
			(Concluded)

	<b>December 31, 2018</b>		
	<b>Foreign Currencies (Thousands)</b>	<b>Exchange Rate</b>	<b>New Taiwan Dollars (Thousands)</b>
<u>Assets denominated in foreign currencies</u>			
Monetary items			
Cash			
USD	\$ 27,035	30.72	\$ 830,385
EUR	957	35.20	33,676
SGD	5,461	22.48	122,762
JPY	58,563	0.278	16,280
RMB	466	4.472	2,082
Accounts receivable			
USD	165,152	30.72	5,072,640
EUR	11	35.20	383
SGD	51	22.48	1,154
JPY	1,471	0.278	409
Non-monetary items			
Investments accounted for using equity method			
SGD	22,066	22.48	496,033
VND	238,757,968	0.0012	286,510

Liabilities denominated in foreign currencies

Monetary items			
Accounts payable			
USD	227,855	30.72	6,998,564
EUR	34,569	35.20	1,216,812
SGD	2,265	22.48	50,921
JPY	50,243	0.278	13,968



	<b>March 31, 2018</b>		
	<b>Foreign Currencies (Thousands)</b>	<b>Exchange Rate</b>	<b>New Taiwan Dollars (Thousands)</b>
<u>Assets denominated in foreign currencies</u>			
Monetary items			
Cash			
USD	\$ 23,095	29.11	\$ 672,188
EUR	878	35.87	31,489
SGD	2,676	22.21	59,442
RMB	489	4.647	2,271
JPY	54,105	0.274	14,819
Accounts receivable			
USD	201,076	29.11	5,852,322
EUR	71	35.87	2,561
SGD	67	22.21	1,499
JPY	8,545	0.274	2,340
Non-monetary items			
Investments accounted for using equity method			
USD	112	29.11	3,265
SGD	22,537	22.21	500,546
VND	213,730,000	0.0012	256,476

Liabilities denominated in foreign currencies

Monetary items			
Accounts payable			
USD	233,195	29.11	6,787,144
EUR	31,321	35.87	1,123,494
SGD	2,145	22.21	47,632
JPY	38,019	0.274	10,413

The unrealized foreign exchange gains were \$39,394 thousand and \$31,523 thousand for the three months ended March 31, 2019 and 2018, respectively. Due to the various foreign currency transactions and the functional currency of each individual entity of the Company, foreign exchange gains and losses cannot be disclosed by the respective significant foreign currency.

#### 40. ADDITIONAL DISCLOSURES

Following are the additional disclosures required by the FSC for the Company:

- a. Financing provided: None.
- b. Endorsement/guarantee provided: Please see Table 1.
- c. Marketable securities held (excluding investments in subsidiaries and associates): Please see Table 2.
- d. Marketable securities acquired and disposed of at costs or prices at least \$300 million or 20% of the paid-in capital: None.

- e. Acquisition of individual real estate at costs of at least \$300 million or 20% of the paid-in capital: Please see Table 3.
- f. Disposal of individual real estate at prices of at least \$300 million or 20% of the paid-in capital: None.
- g. Total purchases from or sales to related parties amounting to at least \$100 million or 20% of the paid-in capital: Please see Table 4.
- h. Receivables from related parties amounting to \$100 million or 20% of the paid-in capital: Please see Table 5.
- i. Names, locations, and other information of investees on which the Company exercises significant influence (excluding investment in Mainland China): Please see Table 6.
- j. Derivative instruments transactions: Please see Notes 7, 20 and 35.
- k. Investment in Mainland China: Please see Table 7.
- l. Intercompany relationships and significant intercompany transaction: Please see Table 8.

#### **41. SEGMENT INFORMATION**

The Company has the following reportable segments that provide different products or services. The reportable segments are managed separately because each segment represents a strategic business unit that serves different markets. Segment information is provided to CEO who allocates resources and assesses segment performance. The Company's measure of segment performance is mainly based on revenues and income before income tax. The Company's reportable segments are as follows:

- a. Domestic fixed communications business - the provision of local telephone services, domestic long distance telephone services, broadband access, and related services;
- b. Mobile communications business - the provision of mobile services, sales of mobile handsets and data cards, and related services;
- c. Internet business - the provision of HiNet services and related services;
- d. International fixed communications business - the provision of international long distance telephone services and related services;
- e. Others - the provision of non-telecom services and the corporate related items not allocated to reportable segments.

Some operating segments have been aggregated into a single operating segment taking into account the following factors: (a) similar economic characteristics such as long-term gross profit margins; (b) the nature of the telecommunications products and services are similar; (c) the nature of production processes of the telecommunications products and services are similar; (d) the type or class of customer for the telecommunications products and services are similar; and (e) the methods used to provide the services to the customers are similar.

There was no material differences between the accounting policies of the operating segments and the accounting policies described in Note 3.

## Segment Revenues and Operating Results

Analysis by reportable segment of revenue and operating results of continuing operations are as follows:

	Domestic Fixed Communi- cations Business	Mobile Communi- cations Business	Internet Business	International Fixed Communi- cations Business	Others	Total
<u>Three months ended March 31, 2019</u>						
Revenues						
From external customers	\$ 15,788,192	\$ 24,481,095	\$ 7,418,363	\$ 2,770,888	\$ 872,623	\$ 51,331,161
Intersegment revenues	<u>4,078,238</u>	<u>392,128</u>	<u>960,639</u>	<u>577,885</u>	<u>1,068,788</u>	<u>7,077,678</u>
Segment revenues	<u>\$ 19,866,430</u>	<u>\$ 24,873,223</u>	<u>\$ 8,379,002</u>	<u>\$ 3,348,773</u>	<u>\$ 1,941,411</u>	58,408,839
Intersegment elimination						<u>(7,077,678)</u>
Consolidated revenues						<u>\$ 51,331,161</u>
Segment operating costs and expenses	<u>\$ 13,858,067</u>	<u>\$ 18,357,933</u>	<u>\$ 3,367,805</u>	<u>\$ 2,797,460</u>	<u>\$ 2,543,578</u>	<u>\$ 40,924,843</u>
Segment income (loss) before income tax	<u>\$ 4,668,808</u>	<u>\$ 3,241,819</u>	<u>\$ 3,010,735</u>	<u>\$ 201,982</u>	<u>\$ (578,621)</u>	<u>\$ 10,544,723</u>
<u>Three months ended March 31, 2018</u>						
Revenues						
From external customers	\$ 15,803,086	\$ 26,778,575	\$ 6,985,730	\$ 2,966,689	\$ 1,098,278	\$ 53,632,358
Intersegment revenues	<u>4,528,383</u>	<u>483,397</u>	<u>874,774</u>	<u>577,934</u>	<u>1,069,457</u>	<u>7,533,945</u>
Segment revenues	<u>\$ 20,331,469</u>	<u>\$ 27,261,972</u>	<u>\$ 7,860,504</u>	<u>\$ 3,544,623</u>	<u>\$ 2,167,735</u>	61,166,303
Intersegment elimination						<u>(7,533,945)</u>
Consolidated revenues						<u>\$ 53,632,358</u>
Segment operating costs and expenses	<u>\$ 14,164,831</u>	<u>\$ 19,670,369</u>	<u>\$ 3,000,286</u>	<u>\$ 2,969,587</u>	<u>\$ 2,812,506</u>	<u>\$ 42,617,579</u>
Segment income (loss) before income tax	<u>\$ 4,893,071</u>	<u>\$ 4,030,597</u>	<u>\$ 2,583,013</u>	<u>\$ 205,632</u>	<u>\$ (628,803)</u>	<u>\$ 11,083,510</u>

## Main Products and Service Revenues

	<u>Three Months Ended March 31</u>	
	<u>2019</u>	<u>2018</u>
Mobile services revenue	\$ 14,721,342	\$ 16,037,024
Sales of products	10,589,242	11,784,639
Local telephone and domestic long distance telephone services revenue	7,004,002	7,550,294
Broadband access and domestic leased line services revenue	5,512,974	5,627,812
Data Communications internet services revenue	5,240,314	5,266,520
International network and leased telephone services revenue	1,810,881	1,909,918
Others	<u>6,452,406</u>	<u>5,456,151</u>
	<u>\$ 51,331,161</u>	<u>\$ 53,632,358</u>

## CHUNGHWA TELECOM CO., LTD. AND SUBSIDIARIES

**ENDORSEMENTS/GUARANTEES PROVIDED**  
**THREE MONTHS ENDED MARCH 31, 2019**  
**(Amounts in Thousands of New Taiwan Dollars)**

No. (Note 1)	Endorsement/ Guarantee Provider	Guaranteed Party		Limits on Endorsement/ Guarantee Amount Provided to Each Guaranteed Party	Maximum Balance for the Period	Ending Balance	Actual Borrowing Amount	Amount of Endorsement/ Guarantee Collateralized by Properties	Ratio of Accumulated Endorsement/ Guarantee to Net Equity Per Latest Financial Statements	Maximum Endorsement/ Guarantee Amount Allowable	Endorsement/ Guarantee Given by Parent on Behalf of Subsidiaries	Endorsement/ Guarantee Given by Subsidiaries on Behalf of Parent	Endorsement/ Guarantee Given on Behalf of Companies in Mainland China	Note
		Name	Nature of Relationship (Note 2)											
1	Senao International Co., Ltd.	Aval Technologies Co., Ltd.	b	\$ 585,783	\$ 300,000	\$ 300,000	\$ 300,000	\$ -	5.12	\$ 2,928,919	Yes	No	No	Notes 3 and 4

Note 1: Significant transactions between the Company and its subsidiaries or among subsidiaries are numbered as follows:

- a. "0" for the Company.
- b. Subsidiaries are numbered from "1".

Note 2: Relationships between the endorsement/guarantee provider and the guaranteed party:

- a. A company with which it does business.
- b. A company in which the Company directly and indirectly holds more than 50 percent of the voting shares.
- c. A company that directly and indirectly holds more than 50 percent of the voting shares in the Company.
- d. Companies in which the Company holds, directly or indirectly, 90% or more of the voting shares.
- e. The Company fulfills its contractual obligations by providing mutual endorsements/guarantees for another company in the same industry or for joint builders for purposes of undertaking a construction project.
- f. All capital contributing shareholders make endorsements/guarantees for their jointly invested company in proportion to their shareholding percentages.
- g. Companies in the same industry provide among themselves joint and several security for a performance guarantee of a sales contract for pre-construction homes pursuant to the Consumer Protection Act for each other.

Note 3: The limits on endorsement or guarantee amount provided to each guaranteed party is up to 10% of the net assets value of the latest financial statements of Senao International Co., Ltd.

Note 4: The total amount of endorsement or guarantee that the Company is allowed to provide is up to 50% of the net assets value of the latest financial statements of Senao International Co., Ltd.

## CHUNGHWA TELECOM CO., LTD. AND SUBSIDIARIES

## MARKETABLE SECURITIES HELD

MARCH 31, 2019

(Amounts in Thousands of New Taiwan Dollars)

Held Company Name	Marketable Securities Type and Name	Relationship with the Company	Financial Statement Account	March 31, 2019				Note
				Shares (Thousands/ Thousand Units)	Carrying Value (Note 1)	Percentage of Ownership	Fair Value	
Chunghwa Telecom Co., Ltd.	Stocks							
	Taipei Financial Center Corp.	-	Financial assets at FVOCI	172,927	\$ 3,550,930	12	\$ 3,550,930	-
	Innovation Works Development Fund, L.P.	-	Financial assets at FVTPL	-	224,015	4	224,015	-
	Industrial Bank of Taiwan II Venture Capital Co., Ltd. (IBT II)	-	Financial assets at FVOCI	5,252	21,555	17	21,555	-
	Global Mobile Corp.	-	Financial assets at FVOCI	7,617	-	3	-	-
	Innovation Works Limited	-	Financial assets at FVOCI	1,000	2,845	2	2,845	-
	RPTI Intergroup International Ltd.	-	Financial assets at FVOCI	4,765	-	10	-	-
	Taiwan mobile payment Co., Ltd.	-	Financial assets at FVOCI	1,200	4,757	2	4,757	-
	Taiwania Capital Buffalo Fund Co., Ltd.	-	Financial assets at FVTPL	300,000	287,259	13	287,259	-
	China Airlines Ltd.	-	Financial assets at FVOCI	263,622	2,599,314	5	2,599,314	Note 2
4 Gamers Entertainment Inc.	-	Financial assets at FVOCI	136	163,011	19.9	163,011	-	
Senao International Co., Ltd.	Stocks							
	N.T.U. Innovation Incubation Corporation	-	Financial assets at FVOCI	1,200	9,433	9	9,433	-
CHIEF Telecom Inc.	Stocks							
	3 Link Information Service Co., Ltd.	-	Financial assets at FVOCI	374	930	10	930	-
Chunghwa Investment Co., Ltd.	Stocks							
	Tatung Technology Inc.	-	Financial assets at FVOCI	4,571	144,035	11	144,035	-
	iSing99 Inc.	-	Financial assets at FVOCI	10,000	52,574	7	52,574	-
	Powertec Energy Corp.	-	Financial assets at FVOCI	20,000	212,874	2	212,874	-
Chunghwa Hsingta Co., Ltd.	Stocks							
	Cotech Engineering Fuzhou Corp.	-	Financial assets at FVOCI	-	11,848	5	11,848	-

Note 1: Showed at carrying amounts with fair value adjustments.

Note 2: Fair value was based on the closing price on March 29, 2019.

**CHUNGHWA TELECOM CO., LTD. AND SUBSIDIARIES**

ACQUISITION OF INDIVIDUAL REAL ESTATE AT COSTS OF AT LEAST \$300 MILLION OR 20% OF THE PAID-IN CAPITAL  
 THREE MONTHS ENDED MARCH 31, 2019  
 (Amounts in Thousands of New Taiwan Dollars)

Buyer	Property	Event Date	Transaction Amount	Payment Status	Counterparty	Relationship	Information on Previous Title Transfer If Counterparty is a Related Party				Pricing Reference	Purpose of Acquisition	Other Terms
							Property Owner	Relationship	Transaction Date	Amount			
Chunghwa Precision Test Tech. Co., Ltd.	Headquarters	2017.07.29-2019.03.29	\$ 849,884	Monthly settlement based on the construction progress and acceptance	Fu Tsu Construction Co., Ltd.	-	Not applicable	Not applicable	Not applicable	Not applicable	Bidding, price comparison and price negotiation	Manufacturing purpose	None

TABLE 4

## CHUNGHWA TELECOM CO., LTD. AND SUBSIDIARIES

TOTAL PURCHASES FROM OR SALES TO RELATED PARTIES AMOUNTING TO AT LEAST NT\$100 MILLION OR 20% OF THE PAID-IN CAPITAL  
THREE MONTHS ENDED MARCH 31, 2019  
(Amounts in Thousands of New Taiwan Dollars)

Company Name	Related Party	Nature of Relationship	Transaction Details				Abnormal Transaction		Notes / Accounts Payable or Receivable	
			Purchase/Sales (Note 1)	Amount (Notes 2 and 5)	% to Total	Payment Terms	Units Price	Payment Terms	Ending Balance (Notes 3 and 5)	% to Total
Chunghwa Telecom Co., Ltd.	Senao International Co., Ltd.	Subsidiary	Sales	\$ 630,813	1	30 days	\$ -	-	\$ 106,297	-
			Purchase	231,807	1	30-90 days	-	-	(903,089)	(8)
	Chunghwa System Integration Co., Ltd.	Subsidiary	Purchase	203,118	1	30 days	-	-	(283,593)	(2)
			Purchase	1,228,054	4	30-60 days	-	-	(834,939)	(7)
	Donghwa Telecom Co., Ltd.	Subsidiary	Purchase	161,148	1	90 days	-	-	(174,205)	(1)
			Purchase	110,080	-	90 days	-	-	(78,855)	(1)
Taiwan International Standard Electronics Co., Ltd.	Associate	Purchase	159,650	1	30-90 days	-	-	(174,816)	(1)	
Senao International Co., Ltd.	Chunghwa Telecom Co., Ltd.	Parent company	Sales	1,546,533	20	30-90 days	-	-	908,867	52
			Purchase	578,289	9	30 days	-	-	(62,153)	(2)
	Aval Technologies Co., Ltd.	Subsidiary	Purchase	106,615	2	30 days	-	-	(242)	-
Chunghwa System Integration Co., Ltd.	Chunghwa Telecom Co., Ltd.	Parent company	Sales	310,214	92	30 days	-	-	282,318	88
Honghwa International Co., Ltd.	Chunghwa Telecom Co., Ltd.	Parent company	Sales	1,228,054	98	30-60 days	-	-	834,917	98
Donghwa Telecom Co., Ltd.	Chunghwa Telecom Co., Ltd.	Parent company	Sales	161,148	48	90 days	-	-	174,205	88
Chunghwa Telecom Singapore Pte., Ltd.	Chunghwa Telecom Co., Ltd.	Parent company	Sales	110,080	41	90 days	-	-	78,855	27

Note 1: Purchase included acquisition of services costs.

Note 2: The differences were because Chunghwa Telecom Co., Ltd. and subsidiaries classified the amount as incremental costs of obtaining contracts, inventories, property, plant and equipment, intangible assets, and operating expenses.

Note 3: Notes and accounts receivable did not include the amounts collected for others and other receivables.

Note 4: Transaction terms with the related parties were determined in accordance with mutual agreements when there were no similar transactions with third parties. Other transactions with related parties were not significantly different from those with third parties.

Note 5: All inter-company transactions, balances, income and expenses are eliminated upon consolidation.

**CHUNGHWA TELECOM CO., LTD. AND SUBSIDIARIES**

**RECEIVABLES FROM RELATED PARTIES AMOUNTING TO AT LEAST NT\$100 MILLION OR 20% OF THE PAID-IN CAPITAL**

**MARCH 31, 2019**

**(Amounts in Thousands of New Taiwan Dollars)**

Company Name	Related Party	Nature of Relationship	Ending Balance	Turnover Rate (Note 1)	Overdue		Amounts Received in Subsequent Period	Allowance for Bad Debts
					Amounts	Action Taken		
Chunghwa Telecom Co., Ltd.	Senao International Co., Ltd.	Subsidiary	\$ 276,452 (Note 2)	10.85	\$ -	-	\$ 255,007	\$ -
	Donghwa Telecom Co., Ltd.	Subsidiary	302,258 (Note 2)	1.40	-	-	296,937	-
	Chunghwa Telecom Global, Inc.	Subsidiary	287,170 (Note 2)	0.82	-	-	280,552	-
	Chunghwa Telecom Singapore Pte., Ltd.	Subsidiary	191,096 (Note 2)	1.46	-	-	167,786	-
Senao International Co., Ltd.	Chunghwa Telecom Co., Ltd.	Parent company	1,221,495 (Note 2)	6.75	-	-	151,917	-
Chunghwa System Integration Co., Ltd.	Chunghwa Telecom Co., Ltd.	Parent company	282,318 (Note 2)	2.73	-	-	88,705	-
Honghwa International Co., Ltd.	Chunghwa Telecom Co., Ltd.	Parent company	834,917 (Note 2)	5.19	-	-	79,627	-
Donghwa Telecom Co., Ltd.	Chunghwa Telecom Co., Ltd.	Parent company	174,205 (Note 2)	4.84	-	-	161,551	-

Note 1: Payments and receipts collected in trust for others are excluded from the accounts receivable for calculating the turnover rate.

Note 2: The amount was eliminated upon consolidation.



## CHUNGHWA TELECOM CO., LTD. AND SUBSIDIARIES

NAMES, LOCATIONS, AND OTHER INFORMATION OF INVESTEEES IN WHICH THE COMPANY EXERCISES SIGNIFICANT INFLUENCE (EXCLUDING INVESTMENT IN MAINLAND CHINA)  
 THREE MONTHS ENDED MARCH 31, 2019  
 (Amounts in Thousands of New Taiwan Dollars)

Investor Company	Investee Company	Location	Main Businesses and Products	Original Investment Amount		Balance as of March 31, 2019			Net Income (Loss) of the Investee	Recognized Gain (Loss) (Notes 1, 2 and 3)	Note
				March 31, 2019	December 31, 2018	Shares (Thousands)	Percentage of Ownership (%)	Carrying Value (Note 3)			
Chunghwa Telecom Co., Ltd.	Senao International Co., Ltd.	Taiwan	Handset and peripherals retailer; sales of CHT mobile phone plans as an agent	\$ 1,065,813	\$ 1,065,813	71,773	28	\$ 1,623,530	\$ 63,497	\$ 16,478	Subsidiary (Note 6)
	Light Era Development Co., Ltd.	Taiwan	Planning and development of real estate and intelligent buildings, and property management	3,000,000	3,000,000	300,000	100	3,852,302	(1,617)	(1,539)	Subsidiary (Note 6)
	Donghwa Telecom Co., Ltd.	Hong Kong	International private leased circuit, IP VPN service, and IP transit services	1,567,453	1,567,453	402,590	100	1,631,543	10,580	10,580	Subsidiary (Note 6)
	Chunghwa Telecom Singapore Pte., Ltd.	Singapore	International private leased circuit, IP VPN service, and IP transit services	574,112	574,112	26,383	100	945,938	32,110	32,113	Subsidiary (Note 6)
	Chunghwa System Integration Co., Ltd.	Taiwan	Providing system integration services and telecommunications equipment	838,506	838,506	60,000	100	730,062	(11,981)	(8,050)	Subsidiary (Note 6)
	CHIEF Telecom Inc.	Taiwan	Network integration, internet data center ("IDC"), communications integration and cloud application services	459,652	459,652	39,426	57	1,792,266	136,701	79,337	Subsidiary (Note 6)
	Chunghwa Investment Co., Ltd.	Taiwan	Investment	639,559	639,559	68,085	89	3,206,351	31,360	28,016	Subsidiary (Note 6)
	Prime Asia Investments Group Ltd. (B.V.I.)	British Virgin Islands	Investment	385,274	385,274	1	100	192,315	(6,021)	(6,021)	Subsidiary (Note 6)
	Honghwa International Co., Ltd.	Taiwan	Telecommunication engineering, sales agent of mobile phone plan application and other business services	180,000	180,000	18,000	100	451,173	(4,987)	(5,169)	Subsidiary (Note 6)
	CHYP Multimedia Marketing & Communications Co., Ltd.	Taiwan	Digital information supply services and advertisement services	150,000	150,000	15,000	100	201,375	3,392	3,349	Subsidiary (Note 6)
	Chunghwa Telecom Vietnam Co., Ltd.	Vietnam	Intelligent energy saving solutions, international circuit, and information and communication technology ("ICT") services.	148,275	148,275	-	100	106,536	(409)	(409)	Subsidiary (Note 6)
	Chunghwa Telecom Global, Inc.	United States	International private leased circuit, internet services, and transit services	70,429	70,429	6,000	100	309,041	20,049	20,614	Subsidiary (Note 6)
	CHT Security Co., Ltd.	Taiwan	Computing equipment installation, wholesale of computing and business machinery equipment and software, management consulting services, data processing services, digital information supply services and internet identify services	240,000	240,000	24,000	80	257,213	26,099	19,276	Subsidiary (Note 6)
	Chunghwa Telecom (Thailand) Co., Ltd.	Thailand	International private leased circuit, IP VPN service, ICT and cloud VAS services	100,000	100,000	1,000	100	94,664	(2,353)	(2,353)	Subsidiary (Note 6)
	Spring House Entertainment Tech. Inc.	Taiwan	Software design services, internet contents production and play, and motion picture production and distribution	62,209	62,209	10,277	56	100,989	4,886	2,738	Subsidiary (Note 6)
	Chunghwa leading Photonics Tech Co., Ltd.	Taiwan	Production and sale of electronic components and finished products	70,500	70,500	7,050	75	101,473	1,912	2,844	Subsidiary (Note 6)
	Smartfun Digital Co., Ltd.	Taiwan	Providing diversified family education digital services	65,000	65,000	6,500	65	73,112	1,284	1,081	Subsidiary (Note 6)
	Chunghwa Telecom Japan Co., Ltd.	Japan	International private leased circuit, IP VPN service, and IP transit services	17,291	17,291	1	100	65,753	3,353	3,353	Subsidiary (Note 6)
	Chunghwa Sochamp Technology Inc.	Taiwan	Design, development and production of Automatic License Plate Recognition software and hardware	20,400	20,400	2,040	51	(7,393)	(1,446)	(1,166)	Subsidiary (Note 6)
	International Integrated System, Inc.	Taiwan	IT solution provider, IT application consultation, system integration and package solution	283,500	283,500	22,498	32	307,978	(9,778)	(3,096)	Associate

(Continued)

Investor Company	Investee Company	Location	Main Businesses and Products	Original Investment Amount		Balance as of March 31, 2019			Net Income (Loss) of the Investee	Recognized Gain (Loss) (Notes 1, 2 and 3)	Note
				March 31, 2019	December 31, 2018	Shares (Thousands)	Percentage of Ownership (%)	Carrying Value (Note 3)			
	Viettel-CHT Co., Ltd.	Vietnam	IDC services	\$ 288,327	\$ 288,327	-	30	\$ 302,794	\$ 46,300	\$ 13,801	Associate
	Taiwan International Standard Electronics Co., Ltd.	Taiwan	Manufacturing, selling, designing, and maintaining of telecommunications systems and equipment	164,000	164,000	1,760	40	234,238	14,188	17,800	Associate
	KKBOX Taiwan Co., Ltd.	Taiwan	Providing of music on-line, software, electronic information, and advertisement services	67,025	67,025	4,438	30	139,951	(24,758)	(7,427)	Associate
	So-net Entertainment Taiwan Limited	Taiwan	Online service and sale of computer hardware	120,008	120,008	9,429	30	127,980	26,656	7,997	Associate
	KingwayTek Technology Co., Ltd.	Taiwan	Publishing books, data processing and software services	69,013	69,013	6,993	26	135,690	3,226	765	Associate
	Taiwan International Ports Logistics Corporation	Taiwan	Import and export storage, logistic warehouse, and ocean shipping service	80,000	80,000	8,000	27	49,887	871	236	Associate
	UUPON Inc.	Taiwan	Information technology service and general advertisement service	97,598	97,598	5,400	15	9,765	(11,087)	(1,668)	Associate
	Alliance Digital Tech Co., Ltd.	Taiwan	Development of mobile payments and information processing service	60,000	60,000	6,000	14	5,080	-	-	Associate
	Chunghwa PChome Fund I Co., Ltd.	Taiwan	Investment, venture capital, investment advisor, management consultant and other consultancy service	200,000	200,000	20,000	50	197,740	(2,468)	(1,234)	Associate
	Cornerstone Ventures Co., Ltd.	Taiwan	Investment, venture capital, investment advisor, management consultant and other consultancy service	4,900	4,900	490	49	4,950	393	193	Associate
Senao International Co., Ltd.	Senao Networks, Inc.	Taiwan	Telecommunication facilities manufactures and sales	202,758	202,758	16,579	34	944,463	72,489	24,496	Associate
	Senao International (Samoa) Holding Ltd.	Samoa Islands	International investment	2,416,645	2,416,645	81,175	100	474,391	(5,973)	(5,973)	Subsidiary (Note 6)
	UUPON Inc.	Taiwan	Information technology service and general advertisement service	24,000	24,000	2,400	7	4,473	(11,087)	(742)	Associate
	Youth Co., Ltd.	Taiwan	Sale of information and communication technologies products	364,950	364,950	8,462	93	203,524	(598)	(2,679)	Subsidiary (Note 6)
	Aval Technologies Co., Ltd.	Taiwan	Sale of information and communication technologies products	60,000	60,000	6,510	100	70,225	293	292	Subsidiary (Note 6)
	SENYOUNG Insurance Agent Co., Ltd.	Taiwan	Property and liability insurance agency	59,000	59,000	5,900	100	54,388	3,699	3,704	Subsidiary (Note 6)
Light Era Development Co., Ltd.	Taoyuan Asia Silicon Valley Innovation Co., Ltd.	Taiwan	Development of real estate	7,500	7,500	750	60	2,064	(3,933)	(2,360)	Subsidiary (Notes 4 and 6)
CHIEF Telecom Inc.	Unigate Telecom Inc.	Taiwan	Telecommunications and internet service	2,000	2,000	200	100	869	(18)	(18)	Subsidiary (Note 6)
	Chief International Corp.	Samoa Islands	Telecommunications and internet service	6,068	6,068	200	100	67,553	2,990	2,990	Subsidiary (Note 6)
Chunghwa Telecom Singapore Pte., Ltd.	ST-2 Satellite Ventures Pte., Ltd.	Singapore	Operation of ST-2 telecommunications satellite	409,061	409,061	18,102	38	522,084	73,929	28,093	Associate
Chunghwa Investment Co., Ltd.	Chunghwa Precision Test Tech. Co., Ltd.	Taiwan	Production and sale of semiconductor testing components and printed circuit board	178,608	178,608	11,230	34	2,138,864	94,201	32,264	Subsidiary (Note 6)
	CHIEF Telecom Inc.	Taiwan	Network integration, internet data center ("IDC"), communications integration and cloud application services	19,064	19,064	2,078	3	89,296	136,701	4,128	Associate (Note 6)
	Senao International Co., Ltd.	Taiwan	Selling and maintaining mobile phones and its peripheral products	49,731	49,731	1,001	-	43,513	63,497	246	Associate (Note 6)
Chunghwa Precision Test Tech. Co., Ltd.	Chunghwa Precision Test Tech USA Corporation	United States	Design and after-sale services of semiconductor testing components and printed circuit board	12,636	12,636	400	100	24,893	418	418	Subsidiary (Note 6)
	CHPT Japan Co., Ltd.	Japan	Related services of electronic parts, machinery processed products and printed circuit board	2,008	2,008	1	100	2,342	21	21	Subsidiary (Note 6)
	Chunghwa Precision Test Tech. International, Ltd.	Samoa Islands	Wholesale and retail of electronic materials, and investment	54,450	54,450	1,700	100	42,202	(1,115)	(1,115)	Subsidiary (Note 6)

(Continued)

Investor Company	Investee Company	Location	Main Businesses and Products	Original Investment Amount		Balance as of March 31, 2019			Net Income (Loss) of the Investee	Recognized Gain (Loss) (Notes 1, 2 and 3)	Note
				March 31, 2019	December 31, 2018	Shares (Thousands)	Percentage of Ownership (%)	Carrying Value (Note 3)			
Prime Asia Investments Group, Ltd. (B.V.I.)	Chunghwa Hsingta Co., Ltd. MeWorks Limited (HK)	Hong Kong Hong Kong	Investment	\$ 375,274	\$ 375,274	1	100	\$ 192,315	\$ (6,021)	\$ (6,021)	Subsidiary (Note 6) Associate
			Investment	10,000	10,000	-	20	-	-	-	
Senao International (Samoa) Holding Ltd.	Senao International HK Limited	Hong Kong	International investment	2,328,754	2,393,646	80,440	100	370,710	(6,127)	(6,127)	Subsidiary (Note 6)
Youth Co., Ltd.	ISPOT Co., Ltd.	Taiwan	Sale of information and communication technologies products	53,021	53,021	-	100	9,315	(21)	(69)	Subsidiary (Note 6)
	Youyi Co., Ltd.	Taiwan	Maintenance of information and communication technologies products	21,354	21,354	-	100	16,910	(100)	(155)	Subsidiary (Note 6)
CHYP Multimedia Marketing & Communications Co., Ltd	Click Force Marketing Company	Taiwan	Advertisement services	44,607	44,607	1,078	49	37,835	1,000	(41)	Associate

Note 1: The amounts were based on reviewed financial statements.

Note 2: Recognized gain (loss) of investees includes amortization of differences between the investment cost and net value and elimination of unrealized transactions.

Note 3: Recognized gain (loss) and carrying value of the investees did not include the adjustment of the difference between the accounting treatment on standalone basis and consolidated basis as a result of the application of IFRS 15.

Note 4: Taoyuan Asia Silicon Valley Innovation Co., Ltd. was approved to end its business and dissolve in April 2019. The liquidation of Taoyuan Asia Silicon Valley Innovation Co., Ltd. is still in process.

Note 5: Investment in mainland China is included in Table 7.

Note 6: The amount was eliminated upon consolidation.

(Concluded)

TABLE 7

## CHUNGHWA TELECOM CO., LTD. AND SUBSIDIARIES

INVESTMENT IN MAINLAND CHINA  
THREE MONTHS ENDED MARCH 31, 2019  
(Amounts in Thousands of New Taiwan Dollars)

Investee	Main Businesses and Products	Total Amount of Paid-in Capital	Investment Type (Note 1)	Accumulated Outflow of Investment from Taiwan as of January 1, 2019	Investment Flows		Accumulated Outflow of Investment from Taiwan as of March 31, 2019	Net Income (Loss) of the Investee	% Ownership of Direct or Indirect Investment	Investment Gain (Loss) (Note 2)	Carrying Value as of March 31, 2019	Accumulated Inward Remittance of Earnings as of March 31, 2019	Note
					Outflow	Inflow							
Senao Trading (Fujian) Co., Ltd.	Sale of information and communication technologies products	\$ 1,073,170	2	\$ 1,073,170	\$ -	\$ -	\$ 1,073,170	\$ 810	100	\$ 810	\$ 200,180	\$ -	Notes 7 and 11
Senao International Trading (Shanghai) Co., Ltd.	Sale of information and communication technologies products	955,838	2	955,838	-	-	955,838	(7,054)	100	(7,054)	74,435	-	Note 11
Senao International Trading (Shanghai) Co., Ltd. (Note 12)	Maintenance of information and communication technologies products	87,540	2	87,540	-	-	87,540	-	100	-	-	-	Notes 8 and 11
Senao International Trading (Jiangsu) Co., Ltd.	Sale of information and communication technologies products	263,736	2	263,736	-	-	263,736	310	100	310	-	-	Notes 9 and 11
Chunghwa Telecom (China) Co., Ltd.	Integrated information and communication solution services for enterprise clients, and intelligent energy network service	177,176	2	177,176	-	-	177,176	(3,657)	100	(3,657)	49,862	-	Note 11
Jiangsu Zhenghua Information Technology Company, LLC	Providing intelligent energy saving solution and intelligent buildings services	189,410	2	142,057	-	-	142,057	-	75	-	-	-	Notes 10 and 11
Shanghai Taihua Electronic Technology Limited	Design of printed circuit board and related consultation service	51,233	2	51,233	-	-	51,233	(1,137)	100	(1,137)	39,033	-	Note 11
Shanghai Chief Telecom Co., Ltd.	Telecommunications and internet service	10,150	1	4,973	-	-	4,973	765	49	375	8,497	-	Note 11

(Continued)

Investee	Accumulated Investment in Mainland China as of March 31, 2019	Investment Amounts Authorized by Investment Commission, MOEA	Upper Limit on Investment Stipulated by Investment Commission, MOEA
SENAO and its subsidiaries (Note 3)	\$ 2,380,284	\$ 2,380,284	\$ 3,523,866
Chunghwa Telecom (China) Co., Ltd. (Note 4)	177,176	177,176	236,942,348
Jiangsu Zhenghua Information Technology Company, LLC (Note 4)	142,057	142,057	236,942,348
Shanghai Taihua Electronic Technology Limited (Note 5)	51,233	97,965	3,747,033
Shanghai Chief Telecom Co., Ltd. (Note 6)	4,973	4,973	1,785,914

Note 1: Investments are divided into three categories as follows:

- a. Direct investment.
- b. Investments through a holding company registered in a third region.
- c. Others.

Note 2: The amounts were calculated based on the investee's reviewed financial statements.

Note 3: Senao International Co., Ltd. and its subsidiaries were calculated based on the consolidated net assets value of Senao International Co., Ltd.

Note 4: Chunghwa Telecom (China) Co., Ltd. and Jiangsu Zhenghua Information Technology Company, LLC were calculated based on the consolidated net assets value of Chunghwa Telecom Co., Ltd.

Note 5: Shanghai Taihua Electronic Technology Limited was calculated based on the consolidated net assets value of Chunghwa Precision Test Tech. Co., Ltd.

Note 6: Shanghai Chief Telecom Co., Ltd. was calculated based on the consolidated net assets value of CHIEF Telecom Inc.

Note 7: Senao Trading (Fujian) Co., Ltd. was approved to end its business and dissolve in September 2018. The liquidation of Senao Trading (Fujian) Co., Ltd. is still in process.

Note 8: The liquidation of Senao International Trading (Shanghai) Co., Ltd. was completed in March 2018.

Note 9: The liquidation of Senao International Trading (Jiangsu) Co., Ltd. was completed in March 2019.

Note 10: The liquidation of Jiangsu Zhenhua Information Technology Company, LLC. was completed in December 2018.

Note 11: The amount was eliminated upon consolidation.

Note 12: The English name is the same as the above entity; however the Chinese name included in the respective Articles of Incorporations is different from the above entity.

(Concluded)

## CHUNGHWA TELECOM CO., LTD. AND SUBSIDIARIES

## INTERCOMPANY RELATIONSHIPS AND SIGNIFICANT TRANSACTIONS

THREE MONTHS ENDED MARCH 31, 2019

(Amounts in Thousands of New Taiwan Dollars)

Year	No. (Note 1)	Company Name	Related Party	Nature of Relationship (Note 2)	Transaction Details					
					Financial Statement Account	Amount (Note 5)	Payment Terms (Note 3)	% to Total Sales or Assets (Note 4)		
2019	0	Chunghwa Telecom Co., Ltd.	Senao International Co., Ltd.	a	Accounts receivable	\$ 106,297	-	-		
					Accrued custodial receipts	170,155	-	-		
					Accounts payable	903,089	-	-		
								318,406	-	-
								630,813	-	1
								231,807	-	-
			CHIEF Telecom Inc.	a	Accounts receivable	41,423	-	-		
					Accounts payable	307,450	-	-		
					Revenues	90,807	-	-		
								26,715	-	-
			CHYP Multimedia Marketing & Communications Co., Ltd.	a	Amounts collected for others	25,281	-	-		
					Operating costs and expenses	15,661	-	-		
			Chunghwa System Integration Co., Ltd.	a	Accounts receivable	24,916	-	-		
					Accounts payable	283,593	-	-		
					Operating costs and expenses	182,210	-	-		
								20,908	-	-
								103,332	-	-
			Chunghwa Telecom Global Inc.	a	Accounts receivable	287,170	-	-		
					Accounts payable	44,219	-	-		
					Revenues	22,468	-	-		
								96,014	-	-
			Donghwa Telecom Co., Ltd.	a	Accounts receivable	302,258	-	-		
					Accounts payable	174,205	-	-		
					Revenues	52,437	-	-		
								161,148	-	-
			Chunghwa Telecom Japan Co., Ltd.	a	Accounts receivable	47,321	-	-		
					Accounts payable	23,992	-	-		
Operating costs and expenses	23,984	-			-					
Chunghwa Telecom Singapore Pte., Ltd.	a	Accounts receivable	191,096	-	-					
		Accounts payable	78,855	-	-					
		Revenues	79,054	-	-					
					110,080	-	-			
Chunghwa Sochamp Technology Inc.	a	Accounts payable	24,479	-	-					
		Accounts payable	834,939	-	-					
Honghwa International Co., Ltd.	a	Revenues	22,567	-	-					
		Operating costs and expenses	1,228,054	-	2					
		Property, plant and equipment	33,550	-	-					

(Continued)

Year	No. (Note 1)	Company Name	Related Party	Nature of Relationship (Note 2)	Transaction Details			
					Financial Statement Account	Amount (Note 5)	Payment Terms (Note 3)	% to Total Sales or Assets (Note 4)
			CHT Security Co., Ltd.	a	Accounts payable	\$ 18,999	-	-
					Operating costs and expenses	31,157	-	-
					Inventories	26,827	-	-
			Aval Technologies Co., Ltd.	a	Other noncurrent assets	10,281	-	-
					Operating costs and expenses	10,362	-	-
					Customers' deposits	11,597	-	-
	1	Light Era Development Co., Ltd.	CHIEF Telecom Inc.	c	Revenues	23,790	-	-
	2	Chunghwa Telecom Singapore Pte., Ltd.	Donghwa Telecom Co., Ltd.	c	Prepayments	17,191	-	-

Note 1: Significant transactions between the Company and its subsidiaries or among subsidiaries are numbered as follows:

- a. "0" for the Company.
- b. Subsidiaries are numbered from "1".

Note 2: Related party transactions are divided into three categories as follows:

- a. The Company to subsidiaries.
- b. Subsidiaries to the Company.
- c. Subsidiaries to subsidiaries.

Note 3: Transaction terms with the related parties were determined in accordance with mutual agreements when there were no similar transactions with third parties. Other transactions with related parties were not significantly different from those with third parties.

Note 4: For assets and liabilities, amount is shown as a percentage to consolidated total assets as of March 31, 2019, while revenues, costs and expenses are shown as a percentage to consolidated revenues for the three months ended March 31, 2019.

Note 5: The amount was eliminated upon consolidation.

(Concluded)